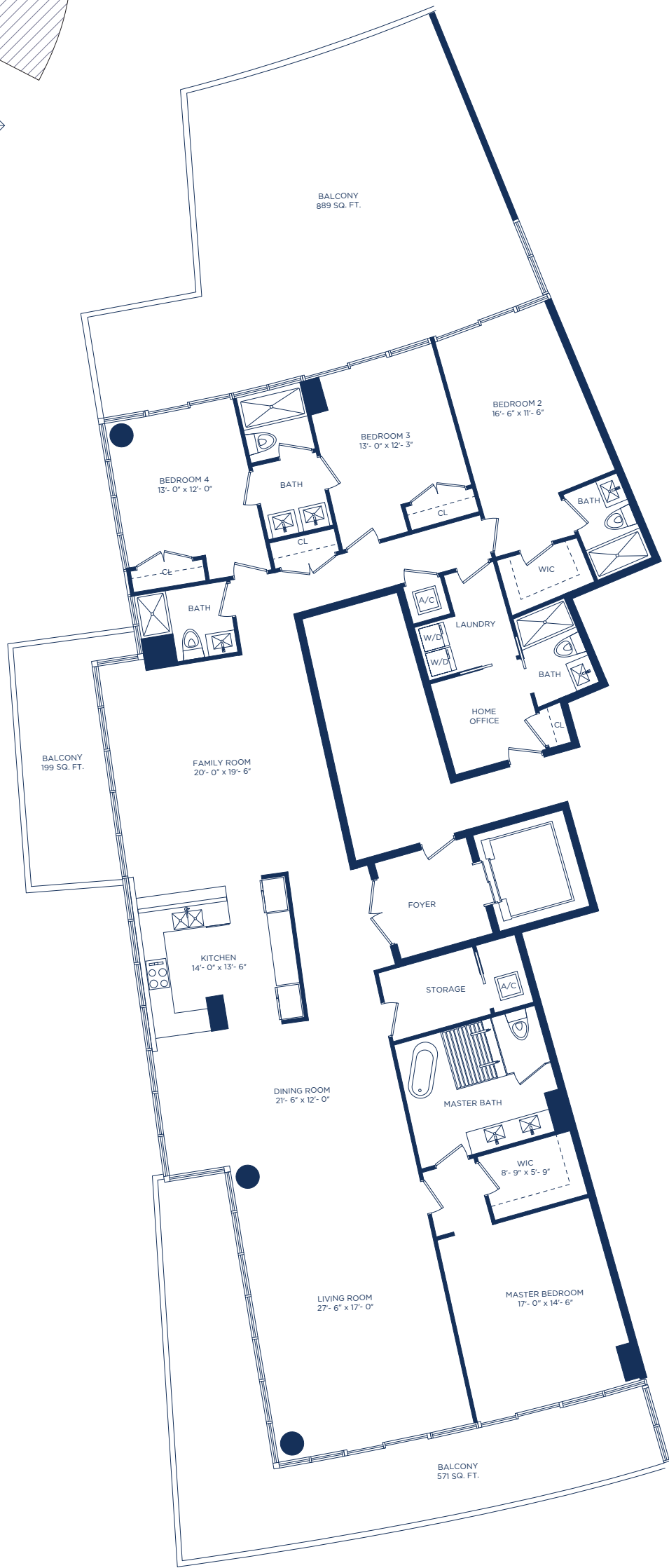
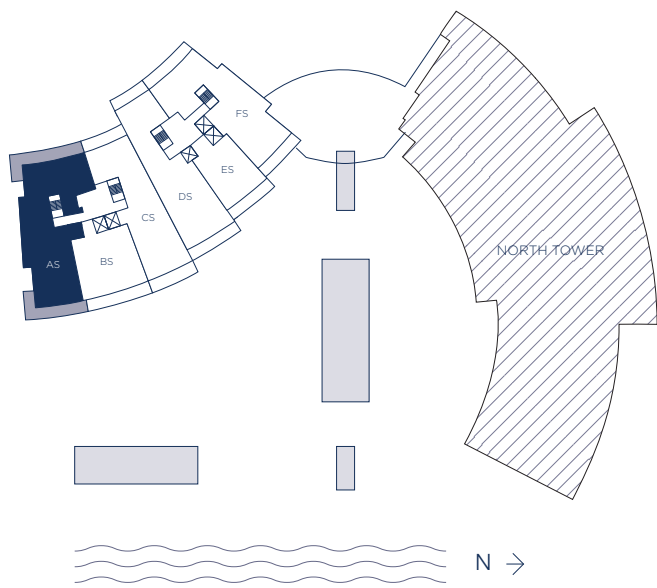


UNIT AS / 4 BEDROOM 5 BATHS + FAMILY ROOM + HOME OFFICE

INTERIOR LIVING AREA	EXTERIOR LIVING AREA	TOTAL LIVING AREA
3,500 SQ. FT.	916 SQ. FT.	4,416 SQ. FT.
325.16 SQ. M.	85.09 SQ. M.	410.25 SQ. M.



There are various methods for calculating the square footage of a Unit and depending on the method of calculation, the quoted square footage of a Unit may vary. The dimensions in the Unit shown in these floor plans have been calculated from the exterior boundaries of the exterior walls to the centerline of interior demising walls, including common elements such as structural walls and other interior structural components of the building and are greater than the dimensions that would be determined by using the description and definition of the "Unit" set forth in the Prospectus and the Declaration. The measurements of a room set forth on this floor plan are generally taken at the greatest points of each given room (as if the room were a perfect rectangle) without regard for any cutouts. Accordingly, the area of the actual room will typically be smaller than the product obtained by multiplying the stated length by the stated width. All dimensions are approximate and may vary with actual construction. All floor plans are subject to change. The furnishings and décor illustrated are not included with the purchase of the Unit. Consult the Prospectus for information regarding what is offered with the Unit and the calculation of the Unit square footage and dimensions.



UNIT AS-2 / 4 BEDROOM 5 BATHS + FAMILY ROOM + HOME OFFICE

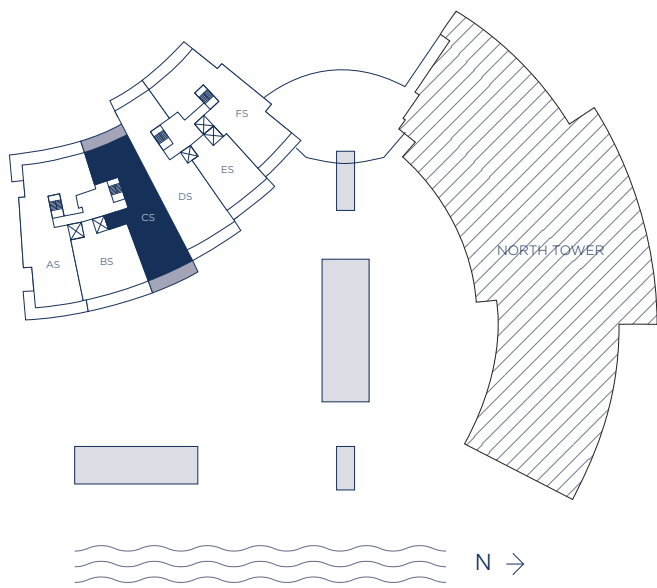
INTERIOR LIVING AREA
3,500 SQ. FT.
325.16 SQ. M.

EXTERIOR LIVING AREA
1,659 SQ. FT.
154.12 SQ. M.

TOTAL LIVING AREA
5,159 SQ. FT.
479.28 SQ. M.



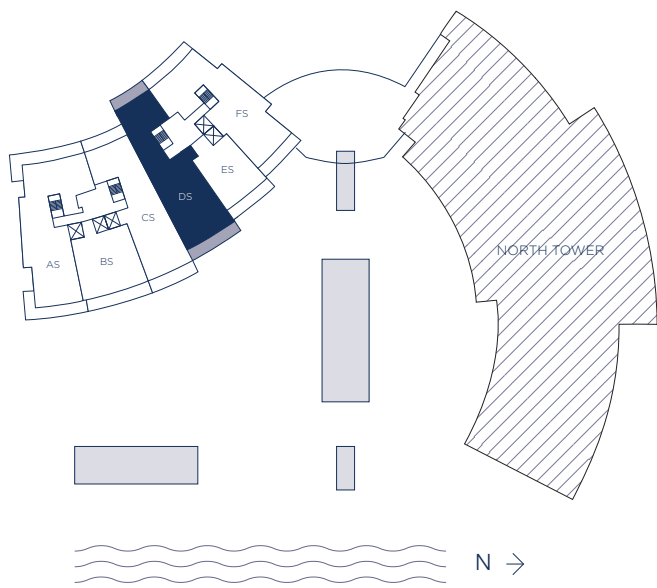
There are various methods for calculating the square footage of a Unit and depending on the method of calculation, the quoted square footage of a Unit may vary. The dimensions in the Unit shown in these floor plans have been calculated from the exterior boundaries of the exterior walls to the centerline of interior demising walls, including common elements such as structural walls and other interior structural components of the building and are greater than the dimensions that would be determined by using the description and definition of the "Unit" set forth in the Prospectus and the Declaration. The measurements of a room set forth on this floor plan are generally taken at the greatest points of each given room (as if the room were a perfect rectangle) without regard for any cutouts. Accordingly, the area of the actual room will typically be smaller than the product obtained by multiplying the stated length by the stated width. All dimensions are approximate and may vary with actual construction. All floor plans are subject to change. The furnishings and décor illustrated are not included with the purchase of the Unit. Consult the Prospectus for information regarding what is offered with the Unit and the calculation of the Unit square footage and dimensions.



UNIT CS / 3 BEDROOMS 3.5 BATHS + FAMILY ROOM

INTERIOR LIVING AREA	EXTERIOR LIVING AREA	TOTAL LIVING AREA
2,787 SQ. FT.	508 SQ. FT.	3,295 SQ. FT.
258.92 SQ. M.	47.19 SQ. M.	306.11 SQ. M.

There are various methods for calculating the square footage of a Unit and depending on the method of calculation, the quoted square footage of a Unit may vary. The dimensions in the Unit shown in these floor plans have been calculated from the exterior boundaries of the exterior walls to the centerline of interior demising walls, including common elements such as structural walls and other interior structural components of the building and are greater than the dimensions that would be determined by using the description and definition of the "Unit" set forth in the Prospectus and the Declaration. The measurements of a room set forth on this floor plan are generally taken at the greatest points of each given room (as if the room were a perfect rectangle) without regard for any cutouts. Accordingly, the area of the actual room will typically be smaller than the product obtained by multiplying the stated length by the stated width. All dimensions are approximate and may vary with actual construction. All floor plans are subject to change. The furnishings and décor illustrated are not included with the purchase of the Unit. Consult the Prospectus for information regarding what is offered with the Unit and the calculation of the Unit square footage and dimensions.



UNIT DS / 4 BEDROOMS 4.5 BATHS + FAMILY ROOM

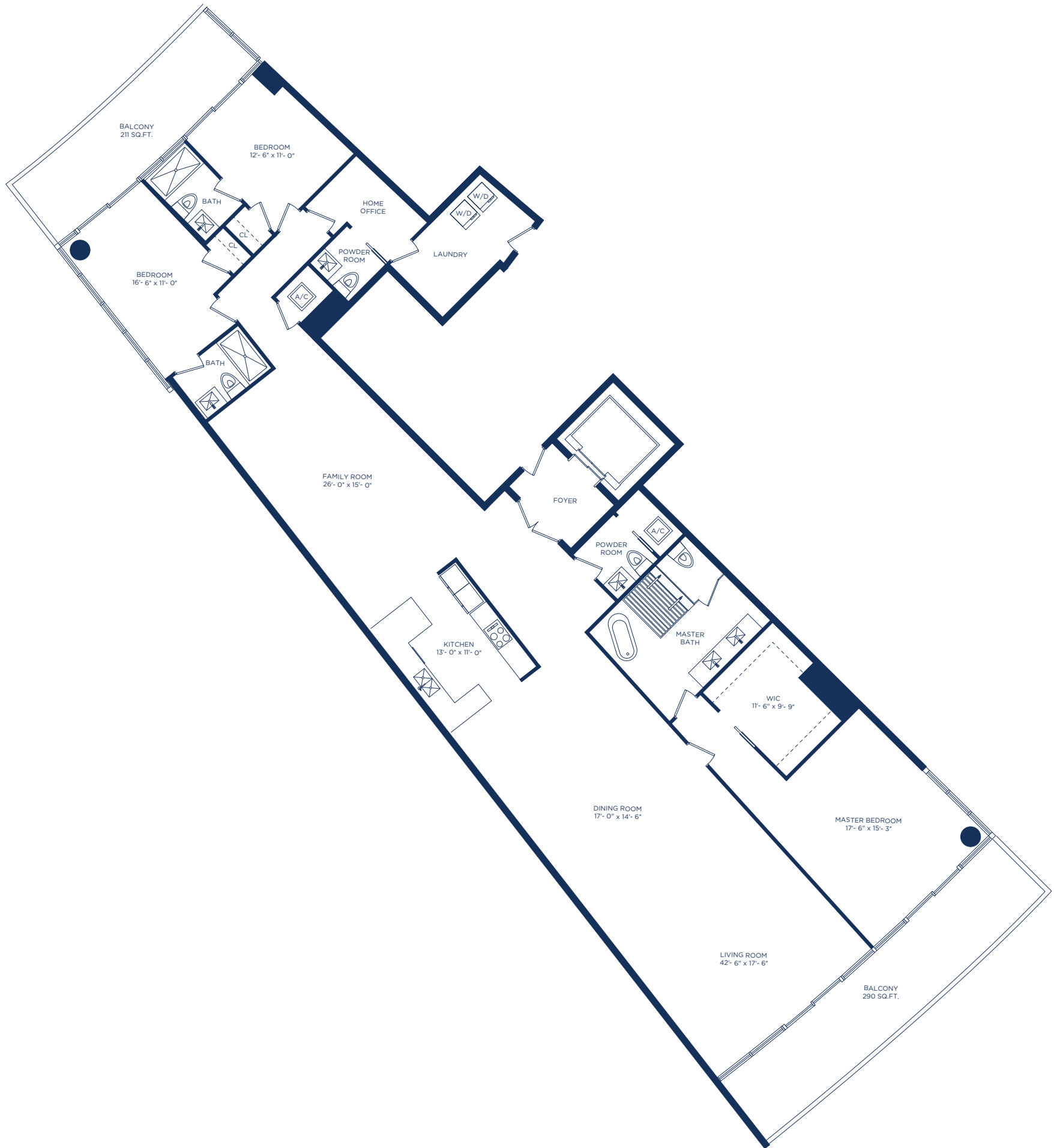
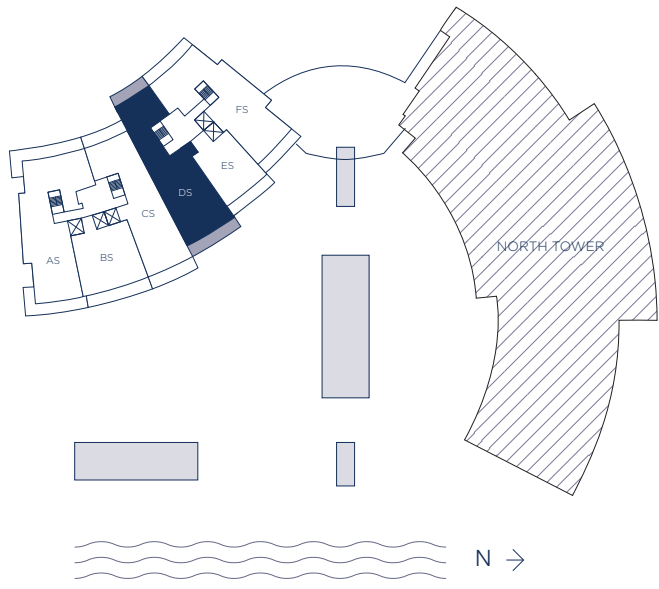
INTERIOR LIVING AREA
3,365 SQ. FT.
312.61 SQ. M.

EXTERIOR LIVING AREA
599 SQ. FT.
55.64 SQ. M.

TOTAL LIVING AREA
3,964 SQ. FT.
368.25 SQ. M.



There are various methods for calculating the square footage of a Unit and depending on the method of calculation, the quoted square footage of a Unit may vary. The dimensions in the Unit shown in these floor plans have been calculated from the exterior boundaries of the exterior walls to the centerline of interior demising walls, including common elements such as structural walls and other interior structural components of the building and are greater than the dimensions that would be determined by using the description and definition of the "Unit" set forth in the Prospectus and the Declaration. The measurements of a room set forth on this floor plan are generally taken at the greatest points of each given room (as if the room were a perfect rectangle) without regard for any cutouts. Accordingly, the area of the actual room will typically be smaller than the product obtained by multiplying the stated length by the stated width. All dimensions are approximate and may vary with actual construction. All floor plans are subject to change. The furnishings and décor illustrated are not included with the purchase of the Unit. Consult the Prospectus for information regarding what is offered with the Unit and the calculation of the Unit square footage and dimensions.



UNIT DS-1 / 3 BEDROOMS 3.5 BATHS + FAMILY ROOM

<p>INTERIOR LIVING AREA 3,034 SQ.FT. 281.86 SQ.M.</p>	<p>EXTERIOR LIVING AREA 501 SQ.FT. 46.54 SQ.M.</p>	<p>TOTAL LIVING AREA 3,535 SQ.FT. 328.40 SQ.M.</p>
---	--	--

There are various methods for calculating the square footage of a Unit and depending on the method of calculation, the quoted square footage of a Unit may vary. The dimensions in the Unit shown in these floor plans have been calculated from the exterior boundaries of the exterior walls to the centerline of interior demising walls, including common elements such as structural walls and other interior structural components of the building and are greater than the dimensions that would be determined by using the description and definition of the "Unit" set forth in the Prospectus and the Declaration. The measurements of a room set forth on this floor plan are generally taken at the greatest points of each given room (as if the room were a perfect rectangle) without regard for any cutouts. Accordingly, the area of the actual room will typically be smaller than the product obtained by multiplying the stated length by the stated width. All dimensions are approximate and may vary with actual construction. All floor plans are subject to change. The furnishings and décor illustrated are not included with the purchase of the Unit. Consult the Prospectus for information regarding what is offered with the Unit and the calculation of the Unit square footage and dimensions.

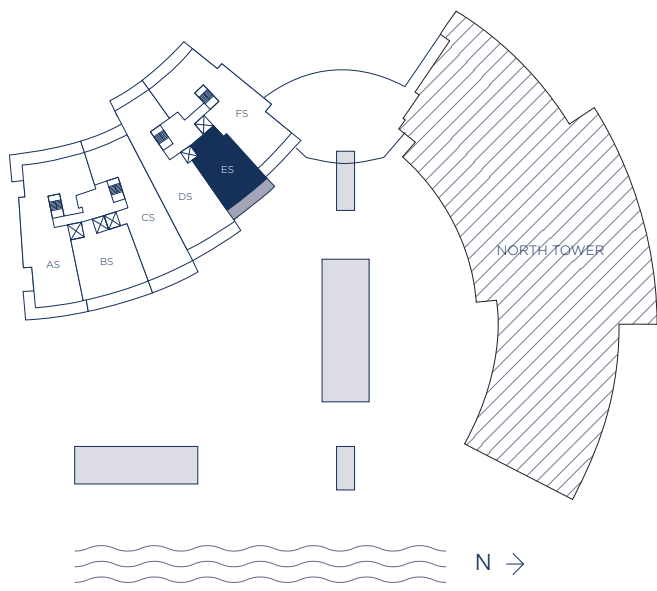


UNIT DS-2 / 4 BEDROOMS 4.5 BATHS + FAMILY ROOM

INTERIOR LIVING AREA	EXTERIOR LIVING AREA	TOTAL LIVING AREA
3,365 SQ. FT.	1,399 SQ. FT.	4,764 SQ. FT.
312.61 SQ. M.	129.97 SQ. M.	442.58 SQ. M.



There are various methods for calculating the square footage of a Unit and depending on the method of calculation, the quoted square footage of a Unit may vary. The dimensions in the Unit shown in these floor plans have been calculated from the exterior boundaries of the exterior walls to the centerline of interior demising walls, including common elements such as structural walls and other interior structural components of the building and are greater than the dimensions that would be determined by using the description and definition of the "Unit" set forth in the Prospectus and the Declaration. The measurements of a room set forth on this floor plan are generally taken at the greatest points of each given room (as if the room were a perfect rectangle) without regard for any cutouts. Accordingly, the area of the actual room will typically be smaller than the product obtained by multiplying the stated length by the stated width. All dimensions are approximate and may vary with actual construction. All floor plans are subject to change. The furnishings and décor illustrated are not included with the purchase of the Unit. Consult the Prospectus for information regarding what is offered with the Unit and the calculation of the Unit square footage and dimensions.

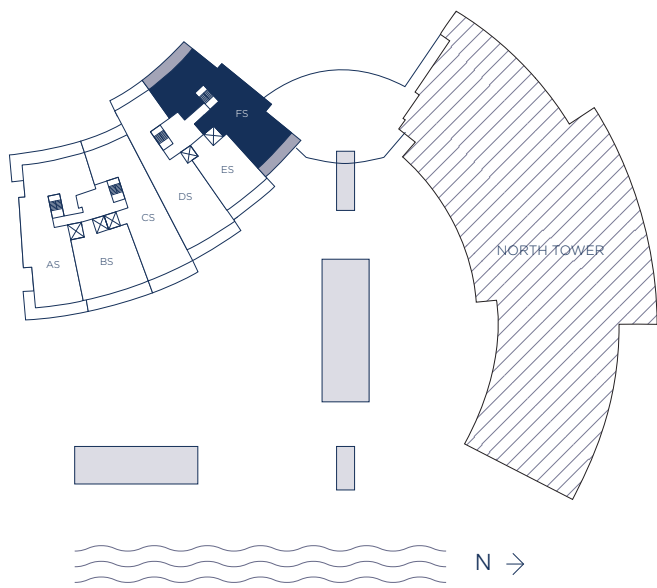


UNIT ES / 1 BEDROOM 2 BATHS + DEN

INTERIOR LIVING AREA	EXTERIOR LIVING AREA	TOTAL LIVING AREA
1,355 SQ. FT.	276 SQ. FT.	1,631 SQ. FT.
125.88 SQ. M.	25.64 SQ. M.	151.52 SQ. M.



There are various methods for calculating the square footage of a Unit and depending on the method of calculation, the quoted square footage of a Unit may vary. The dimensions in the Unit shown in these floor plans have been calculated from the exterior boundaries of the exterior walls to the centerline of interior demising walls, including common elements such as structural walls and other interior structural components of the building and are greater than the dimensions that would be determined by using the description and definition of the "Unit" set forth in the Prospectus and the Declaration. The measurements of a room set forth on this floor plan are generally taken at the greatest points of each given room (as if the room were a perfect rectangle) without regard for any cutouts. Accordingly, the area of the actual room will typically be smaller than the product obtained by multiplying the stated length by the stated width. All dimensions are approximate and may vary with actual construction. All floor plans are subject to change. The furnishings and décor illustrated are not included with the purchase of the Unit. Consult the Prospectus for information regarding what is offered with the Unit and the calculation of the Unit square footage and dimensions.

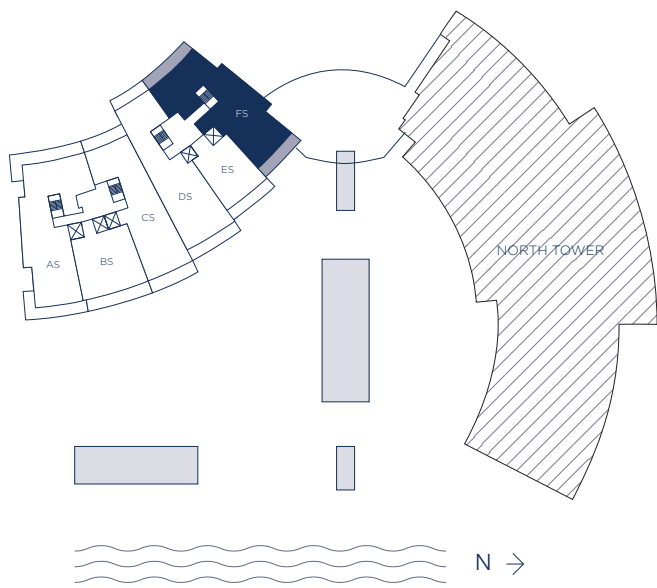


UNIT FS / 3 BEDROOMS 3.5 BATHS + FAMILY ROOM + HOME OFFICE

INTERIOR LIVING AREA	EXTERIOR LIVING AREA	TOTAL LIVING AREA
2,792 SQ. FT.	489 SQ. FT.	3,281 SQ. FT.
259.38 SQ. M.	45.42 SQ. M.	304.80 SQ. M.



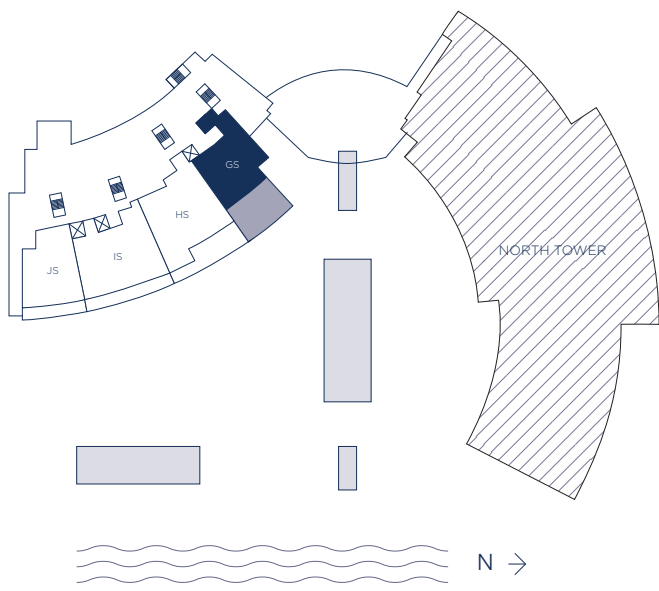
There are various methods for calculating the square footage of a Unit and depending on the method of calculation, the quoted square footage of a Unit may vary. The dimensions in the Unit shown in these floor plans have been calculated from the exterior boundaries of the exterior walls to the centerline of interior demising walls, including common elements such as structural walls and other interior structural components of the building and are greater than the dimensions that would be determined by using the description and definition of the "Unit" set forth in the Prospectus and the Declaration. The measurements of a room set forth on this floor plan are generally taken at the greatest points of each given room (as if the room were a perfect rectangle) without regard for any cutouts. Accordingly, the area of the actual room will typically be smaller than the product obtained by multiplying the stated length by the stated width. All dimensions are approximate and may vary with actual construction. All floor plans are subject to change. The furnishings and décor illustrated are not included with the purchase of the Unit. Consult the Prospectus for information regarding what is offered with the Unit and the calculation of the Unit square footage and dimensions.



UNIT FS-2 / 3 BEDROOMS 3.5 BATHS + FAMILY ROOM + HOME OFFICE

INTERIOR LIVING AREA	EXTERIOR LIVING AREA	TOTAL LIVING AREA
2,776 SQ. FT.	409 SQ. FT.	3,185 SQ. FT.
257.89 SQ. M.	37.99 SQ. M.	295.88 SQ. M.

There are various methods for calculating the square footage of a Unit and depending on the method of calculation, the quoted square footage of a Unit may vary. The dimensions in the Unit shown in these floor plans have been calculated from the exterior boundaries of the exterior walls to the centerline of interior demising walls, including common elements such as structural walls and other interior structural components of the building and are greater than the dimensions that would be determined by using the description and definition of the "Unit" set forth in the Prospectus and the Declaration. The measurements of a room set forth on this floor plan are generally taken at the greatest points of each given room (as if the room were a perfect rectangle) without regard for any cutouts. Accordingly, the area of the actual room will typically be smaller than the product obtained by multiplying the stated length by the stated width. All dimensions are approximate and may vary with actual construction. All floor plans are subject to change. The furnishings and décor illustrated are not included with the purchase of the Unit. Consult the Prospectus for information regarding what is offered with the Unit and the calculation of the Unit square footage and dimensions.

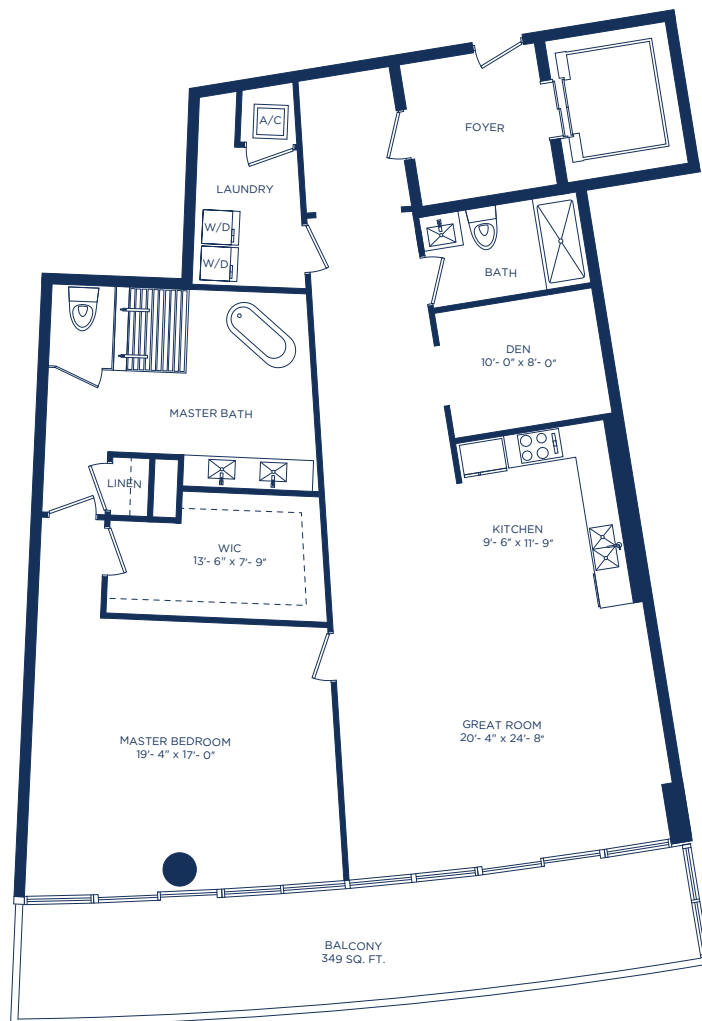
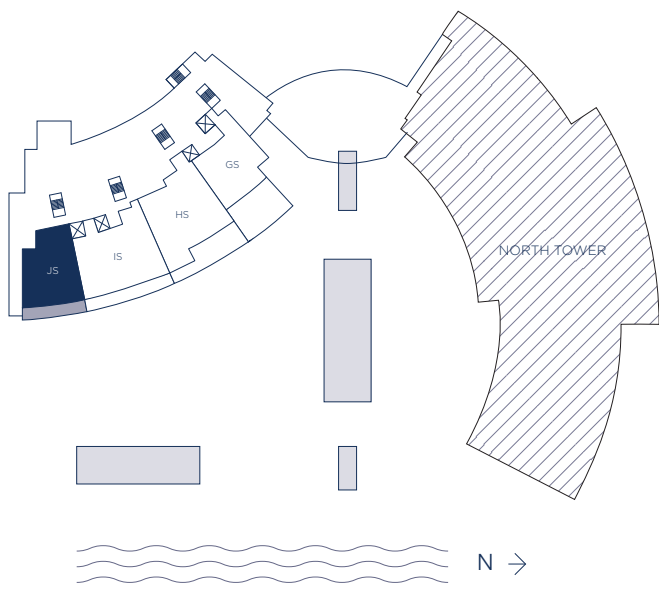


UNIT GS / 1 BEDROOM 2 BATHS + DEN

INTERIOR LIVING AREA	EXTERIOR LIVING AREA	TOTAL LIVING AREA
1,813 SQ. FT.	936 SQ. FT.	2,749 SQ. FT.
168.43 SQ. M.	86.95 SQ. M.	255.38 SQ. M.



There are various methods for calculating the square footage of a Unit and depending on the method of calculation, the quoted square footage of a Unit may vary. The dimensions in the Unit shown in these floor plans have been calculated from the exterior boundaries of the exterior walls to the centerline of interior demising walls, including common elements such as structural walls and other interior structural components of the building and are greater than the dimensions that would be determined by using the description and definition of the "Unit" set forth in the Prospectus and the Declaration. The measurements of a room set forth on this floor plan are generally taken at the greatest points of each given room (as if the room were a perfect rectangle) without regard for any cutouts. Accordingly, the area of the actual room will typically be smaller than the product obtained by multiplying the stated length by the stated width. All dimensions are approximate and may vary with actual construction. All floor plans are subject to change. The furnishings and décor illustrated are not included with the purchase of the Unit. Consult the Prospectus for information regarding what is offered with the Unit and the calculation of the Unit square footage and dimensions.

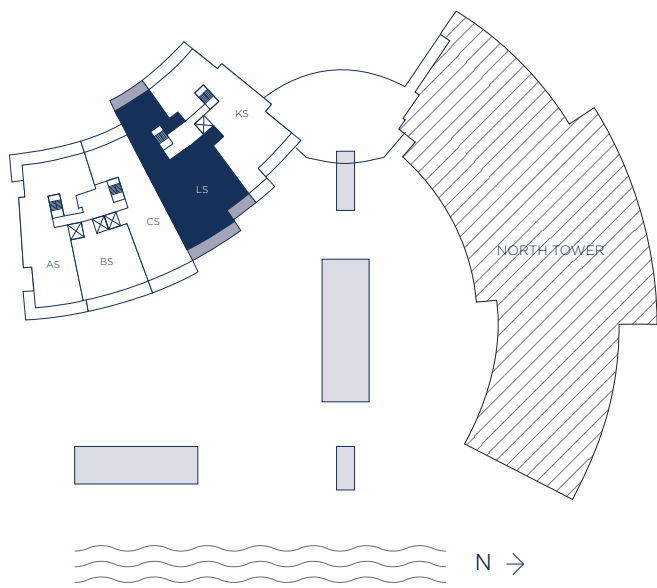


UNIT JS / 1 BEDROOM 2 BATHS + DEN

INTERIOR LIVING AREA	EXTERIOR LIVING AREA	TOTAL LIVING AREA
1,838 SQ. FT.	349 SQ. FT.	2,187 SQ. FT.
170.75 SQ. M.	32.42 SQ. M.	203.17 SQ. M.




There are various methods for calculating the square footage of a Unit and depending on the method of calculation, the quoted square footage of a Unit may vary. The dimensions in the Unit shown in these floor plans have been calculated from the exterior boundaries of the exterior walls to the centerline of interior demising walls, including common elements such as structural walls and other interior structural components of the building and are greater than the dimensions that would be determined by using the description and definition of the "Unit" set forth in the Prospectus and the Declaration. The measurements of a room set forth on this floor plan are generally taken at the greatest points of each given room (as if the room were a perfect rectangle) without regard for any cutouts. Accordingly, the area of the actual room will typically be smaller than the product obtained by multiplying the stated length by the stated width. All dimensions are approximate and may vary with actual construction. All floor plans are subject to change. The furnishings and décor illustrated are not included with the purchase of the Unit. Consult the Prospectus for information regarding what is offered with the Unit and the calculation of the Unit square footage and dimensions.



UNIT LS / 3 BEDROOMS 4.5 BATHS + DEN + FAMILY ROOM + HOME OFFICE

INTERIOR LIVING AREA	EXTERIOR LIVING AREA	TOTAL LIVING AREA
3,724 SQ. FT.	730 SQ. FT.	4,454 SQ. FT.
345.97 SQ. M.	67.81 SQ. M.	413.78 SQ. M.

 There are various methods for calculating the square footage of a Unit and depending on the method of calculation, the quoted square footage of a Unit may vary. The dimensions in the Unit shown in these floor plans have been calculated from the exterior boundaries of the exterior walls to the centerline of interior demising walls, including common elements such as structural walls and other interior structural components of the building and are greater than the dimensions that would be determined by using the description and definition of the "Unit" set forth in the Prospectus and the Declaration. The measurements of a room set forth on this floor plan are generally taken at the greatest points of each given room (as if the room were a perfect rectangle) without regard for any cutouts. Accordingly, the area of the actual room will typically be smaller than the product obtained by multiplying the stated length by the stated width. All dimensions are approximate and may vary with actual construction. All floor plans are subject to change. The furnishings and décor illustrated are not included with the purchase of the Unit. Consult the Prospectus for information regarding what is offered with the Unit and the calculation of the Unit square footage and dimensions.