



chhouse

FIND YOUR GROOVE BETWEEN THE
BEACH & THE INTRACOASTAL

HYDE™

beach house

HOLLYWOOD FLORIDA

HYDE DINA

Fashion \ *Social* \ *Music* \ *Art*

ORAL REPRESENTATIONS CANNOT BE RELIED UPON AS CORRECTLY STATING THE REPRESENTATIONS OF THE DEVELOPER. FOR CORRECT REPRESENTATIONS, MAKE REFERENCE TO THIS BROCHURE AND TO THE DOCUMENTS REQUIRED BY SECTION 718.503, FLORIDA STATUTES, TO BE FURNISHED BY A DEVELOPER TO A BUYER OR LESSEE.

SEE LEGAL DISCLAIMERS ON BACK COVER

Hyde Beach House pairs a cool urban vibe with the ultimate array of beach inspired amenities and amazing services to create Hollywood's hippest, hottest resort-style residences. Set on the vibrant Intracoastal Waterway -- just steps from the pristine Atlantic Ocean beach -- this brilliantly-designed property is the creation of visionary co-developers Jorge Pérez, Chairman and CEO of The Related Group; lifestyle impresario Sam Nazarian, Founder, Chairman and CEO of sbe; and Brazilian designer Debora Aguiar, Principal of Debora Aguiar Architects.

From a private rooftop park with an al fresco movie theater, to the exclusive Aqua Club offering the coolest watersports equipment and an expansive pool deck looking on to the Intracoastal Waterway, Hyde Beach House puts relaxation and entertainment at your fingertips. With VIP access to ETARU Beach Club, the oceanfront becomes your private paradise. And with on-demand services, you get everything you need all-day/every day in just one single touch.

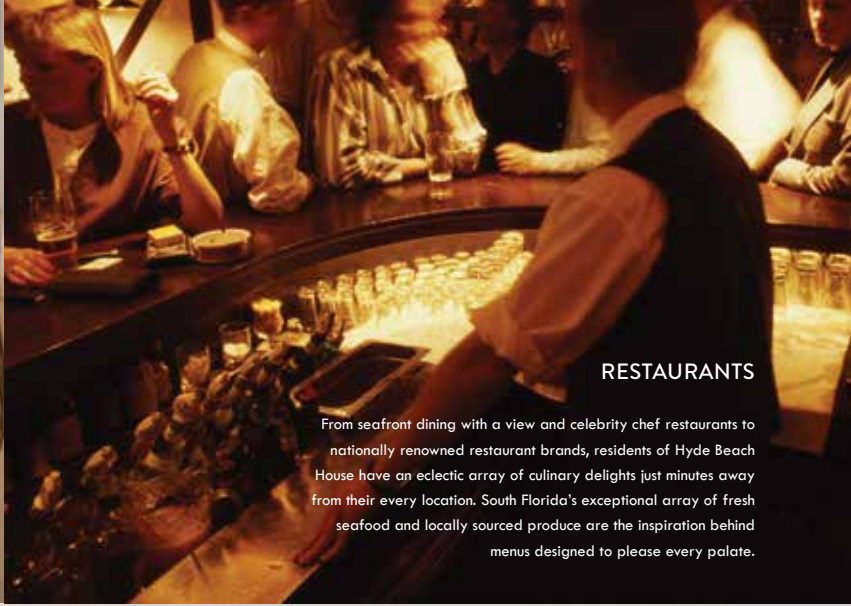
ART

Hyde Beach House is just a short drive from Miami's internationally renowned arts scene. The annual Art Basel Miami Beach fair attracts artists, collectors and dealers from around the world for a week-long celebration of the best contemporary artwork. Throughout the year, top museums and performing arts institutions offer endless opportunities to enjoy cultural riches from a variety of disciplines and media.



RESTAURANTS

From seafront dining with a view and celebrity chef restaurants to nationally renowned restaurant brands, residents of Hyde Beach House have an eclectic array of culinary delights just minutes away from their every location. South Florida's exceptional array of fresh seafood and locally sourced produce are the inspiration behind menus designed to please every palate.



SPORTS

Outdoor sporting enthusiasts have access to an exceptional variety of recreational pursuits from beach volleyball and tennis to jet skiing and windsurfing. Indulge in your favorite pastimes with friends and family, or hone your skills at a new passion with the help of an experienced instructor.



SHOPS

Just minutes away, The Shops at Bal Harbour offers the world's finest luxury fashion, fine jewelry, and designer home boutiques in a truly elegant atmosphere. More than simply a shopping destination, The Shops at Bal Harbour also features formal and casual dining restaurants. Also nearby, the Aventura Mall offers dozens of national and international brands for an extraordinary shopping experience.



GOLF

With year-round temperate weather and stunning scenery, South Florida is a golfer's paradise. With a wide range of courses at every level, the area offers exceptional golfing experiences for everyone from occasional players to world famous pros. Elite courses, including the top-ranked Doral, Turnberry Isle, and The Breakers, are among must-play destinations within easy distance of Hyde Beach House.



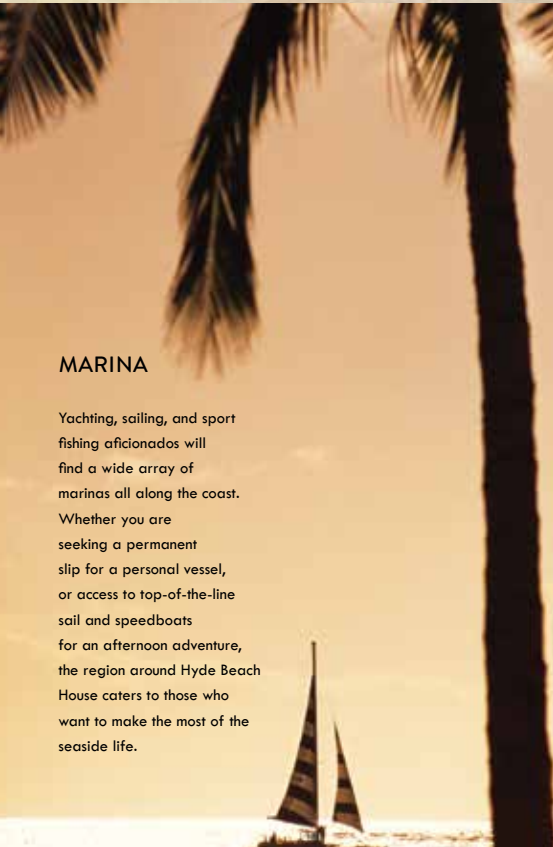
NIGHTLIFE

South Florida's legendary clubs and lounges offer a dynamic social scene every night of the week -- all year round. From well known names like the Hard Rock Cafe to independent nightclubs you'll only find here, there's a scene and style for every taste. Internationally renowned DJs keep the tunes going and the energy high all night long.



MARINA

Yachting, sailing, and sport fishing aficionados will find a wide array of marinas all along the coast. Whether you are seeking a permanent slip for a personal vessel, or access to top-of-the-line sail and speedboats for an afternoon adventure, the region around Hyde Beach House caters to those who want to make the most of the seaside life.



HOLLYWOOD BEACH

HALLANDALE BEACH

AVENTURA MALL

AVENTURA

SUNNY ISLES BEACH

ARMANI TOWER

BAL HARBOUR

BAL HARBOUR SHOPS

THINGS TO HYDE FOR

With its cool cafes and impressive array of edgy art galleries, Hollywood is making its mark as one of South Florida's hottest emerging scenes for art and culture. Add in the award-winning Downtown Hollywood Mural Project and live music courtesy of the Hollywood ArtsPark Experience, and the area's cultural offerings cannot be beat. Looking for even more fun in the sun? Hyde Beach House is just minutes from the best of South Florida's dining, shopping, nightlife, and recreational destinations.



CONSULTED AND LEGAL CONTRACTORS

RELAAXED

by Sun

By Sea

by Sand

by Style

PROJECT FEATURES & AMENITIES

RESORT-STYLE AMENITIES AT HYDE BEACH HOUSE

- Located in Hollywood Beach in the heart of South Florida, Hyde Beach House is nestled between the Intracoastal Waterway and pristine Atlantic Ocean beaches just minutes from Aventura Mall, Bal Harbour Shops, and Gulfstream Park
- Expansive pool deck with views of the Atlantic Ocean and the Intracoastal Waterway featuring semiprivate cabanas, an infinity-edge pool, an outdoor kitchen and dining area, and an outdoor movie theater with lounge area and fire pit
- Stylish and sophisticated amenity spaces designed by Brazilian designer Debora Aguiar
- Extraordinary architecture by internationally acclaimed architects Cohen, Freedman, Encinosa & Associates — whose projects include Apogee Beach, Hyde Resort & Residences, Mansions at Aqualina, and Bellini Bal Harbour
- Permanent installation of curated art throughout the building's public spaces
- Elegant double-volume entrance lobby appointed with contemporary furniture and finishes
- Sports Club featuring amazing Intracoastal views from an outdoor multi-use sports court designed for tennis as well as an indoor racquetball court
- Aqua Club situated directly on the Intracoastal Waterway offering Jet Skis, paddle boards, kayaks, along with other aquatic equipment
- Private rooftop lounge area exclusive to unit owners with a hot tub, a modern outdoor shower, a lounge area with sunbeds, a dining area, a fire pit, and panoramic water views
- State-of-the-art, fully equipped fitness center with cardio theater overlooking the pool deck and the Intracoastal
- Exclusive health spa with men's and women's facilities

VIP ACCESS TO ETARU BEACH CLUB

- Chaise lounges, towel and umbrella service, and butler service for beachfront snacks and beverages
- Private beachside treatment rooms offering luxurious massages
- Exclusive access to beachside changing rooms complete with showers and steam room

FULLY SERVED LIFESTYLE

- Personal concierge services with 24/7/365 access to the finest South Florida has to offer including:
 - Tickets to sporting and theater events
 - Restaurant, spa, and nightclub reservations
 - Chartered yacht services
 - Travel itineraries
- Room service available 365 days a year
- Housekeeping, cleaning, and laundry services
- 24-hour complimentary valet parking and secured parking garage
- 24-hour attended security services and controlled access
- High-speed internet access in all public areas

RESIDENCE FEATURES

- 77 decorator-ready, carpeted, one, two, and three bedroom condominium residences with unrestricted use rights and open-concept contemporary floor plans
- 265 beautifully finished and furnished one, two, and three bedroom resort condominiums with a use restriction not to exceed 150 days per year
 - Luxurious contemporary European designer furniture
 - In-unit technology, including high-speed internet access, Wi-Fi, phone service, and individual climate control systems
 - Security features including in-room safes and electronic door locks
- Wide private terraces with glass railings and unobstructed views, accessible from the living and bedroom areas
- Dazzling water views from virtually every residence
- Energy-efficient, tinted, impact-resistant, floor-to-ceiling sliding glass doors and windows
- Spacious walk-in closets in most residences as well as owner's closets
- Individually controlled, energy-efficient central air conditioning and heating systems
- Advanced Technology "Smart Building" pre-wired with fiber optics for high-speed internet, data/voice, and cable TV access

STYLE SAVVY KITCHENS

- A premium selection of contemporary European cabinetry
- Imported stone countertops with convenient breakfast bar in most residences
- Stainless steel appliance package with refrigerator/freezer, glass cooktop, built-in oven, multi-cycle whisper-quiet dishwasher, built-in microwave with integrated vent hood, and washer and dryer
- Double stainless steel under-mount sink, with single-lever European-style pullout faucet sprayer
- Imported designer porcelain tile floors

TRANQUIL BATHROOMS

- European style cabinetry with exceptional detailing
- Imported stone countertops
- Full-size vanity mirrors with designer lighting
- Floors and wet walls clad in imported designer porcelain tile
- Designer fixtures and accessories
- Spacious soaking tub and glass-enclosed shower



Everything you need
Nothing you don't

WELCOME TO YOUR OWN
BEACH CLUB, YOUR HOUSE



ARTIST'S CONCEPTUAL RENDERING

SEE LEGAL DISCLAIMERS ON BACK COVER

THIS ARTISTIC RENDERING OF THE HYDE BEACH CLUB INCLUDES A RENDERING OF THE PROPOSED HYDE BEACH HOUSE AND EXCLUDES ACTUAL, AND OTHER PROPOSED, TOWERS THAT ARE IN THE SAME SIGHT LINE OF ETARU BEACH CLUB AS THE SIGHT LINE DEPICTED



6:00 pm - paddle-boarding into the sunset



8:00 pm - girls night in the party's starting



6:00 am - surf session



9:00 am - sun's up and breakfast is ready



5:00 pm - catching the last waves of the day



4:00 pm - banging out beachside with friends



1:00 pm - the perfect time for a high-speed adventure



2:00 pm - our favorite place to relax and catch up



11:00 am - get spoiled at the beach club



10:00 am quality time with your best buddy



TAKE THE PARTY TO THE ROOFTOP AMENITIES DECK WHERE YOU CAN GRILL UP A DELICIOUS DINNER, TAKE IN A MOVIE UNDER THE STARS, LOUNGE UNTIL THE WEE HOURS, OR ENJOY A SWIM WITH A VIEW TO THE HORIZON

THE AQUA CLUB AT HYDE BEACH HOUSE PUTS SOUTH FLORIDA'S ENDLESS ARRAY OF WATER SPORTS RIGHT AT YOUR FINGERTIPS WITH JET-SKIS, PADDLE BOARDS AND KAYAKS ALONG WITH OTHER AQUATIC EQUIPMENT.



AQUA CLUB SITUATED DIRECTLY ON THE INTRACOASTAL WATERWAY

SPORTS CLUB FEATURING OUTDOOR MULTI-USE SPORTS COURT



OUTDOOR MOVIE THEATER WITH LOUNGE AREA AND FIRE PITS



PRIVATE ROOFTOP LOUNGE EXCLUSIVE TO UNIT OWNERS



UNMISTAKABLE
ROMANCE



WAKE UP TO SPECTACULAR PANORAMIC
VIEWS OVER THE INTRACOASTAL
WATERWAY AND ACROSS NEVER-ENDING
WAVES OF BLUE SURF THAT REACH TO THE
HORIZON AT HOLLYWOOD'S HIPPEST NEW
LUXURY CONDOMINIUM

NORTH EAST VIEW

SOUTH EAST VIEW



NORTH VIEW

SOUTH VIEW



EXTRAORDINARY STYLE



DESIGNED FOR LIFE WITHOUT LIMITS, HYDE BEACH HOUSE RESIDENCES BLUR THE LINES BETWEEN INDOOR AND OUTDOOR LIVING WITH SPECTACULAR FLOOR-TO-CEILING WINDOWS AND CONTEMPORARY OPEN-CONCEPT LAYOUTS

ARTIST'S CONCEPTUAL RENDERING

SEE LEGAL DISCLAIMERS ON BACK COVER



JORGE M. PÉREZ
CARLOS ROSSO

The Related Group

Founded in 1979 by Jorge M. Pérez, The Related Group is the nation's leading developer of multi-family residences and is one of the largest Hispanic-owned businesses in the United States. Under Pérez's direction, as well as the leadership of Carlos Rosso, President of Condominium Development Division, The Related Group and its affiliates have redefined the South Florida landscape. Since its inception, The Related Group has developed and/or managed more than 80,000 apartments and condominium residences. Its many distinctive properties in South Florida include Portofino Tower, the Yacht Club at Portofino, Murano at Portofino, Murano Grande, Icon South Beach, One Ocean, Marea, and SLS Hotel & Residences Brickell.

The Related Group's developments are often distinguished by groundbreaking partnerships with world-renowned architects, designers, and artists, resulting in residential properties that are recognized as urban landmarks. The many awards the company has earned include the prestigious Honor Award from the National Building Museum, In addition, Icon Brickell has won 18 BEST awards from the Builders Association of South Florida. The company and its leadership are committed to developing properties that energize cities, celebrate innovative architecture and urban planning, and create vibrant new ways to live in the most dynamic neighborhoods.



SAM NAZARIAN

sbe

With an uncompromising entrepreneurial instinct and personal style, sbe Founder, Chairman and CEO Sam Nazarian has been a transformative force in revolutionizing contemporary hospitality. In only a decade, Nazarian has defined "the scene" in Los Angeles and beyond, driving sbe to become the creative wellspring for some of the world's most sought-after luxury lifestyle brands, including SLS Hotels, Katsuya by Starck, The Bazaar by José Andrés, and Hyde Lounge. Since launching sbe's first nightclub in 2003, Nazarian has evolved the privately-held sbe into the definitive name in luxury property with a collection that includes some of the most exclusive and high-profile hospitality and lifestyle destinations in the world. To create sbe's award-winning portfolio, Nazarian has aligned with internationally acclaimed design and culinary talents such as Philippe Starck and Matthew Rolston and chefs José Andrés and Katsuya Uechi.

The youngest executive to be named one of the "Top 100 Most Powerful People in Southern California" by West, the Los Angeles Times' magazine, Nazarian was also named among "The Influentials" in Los Angeles Magazine, honored with the Mondavi Wine & Food award, and named "Hotelier of the Year" for two consecutive years by HotelChatter.com. He is a member of the Southern California Institute of Architecture's Board of Directors.

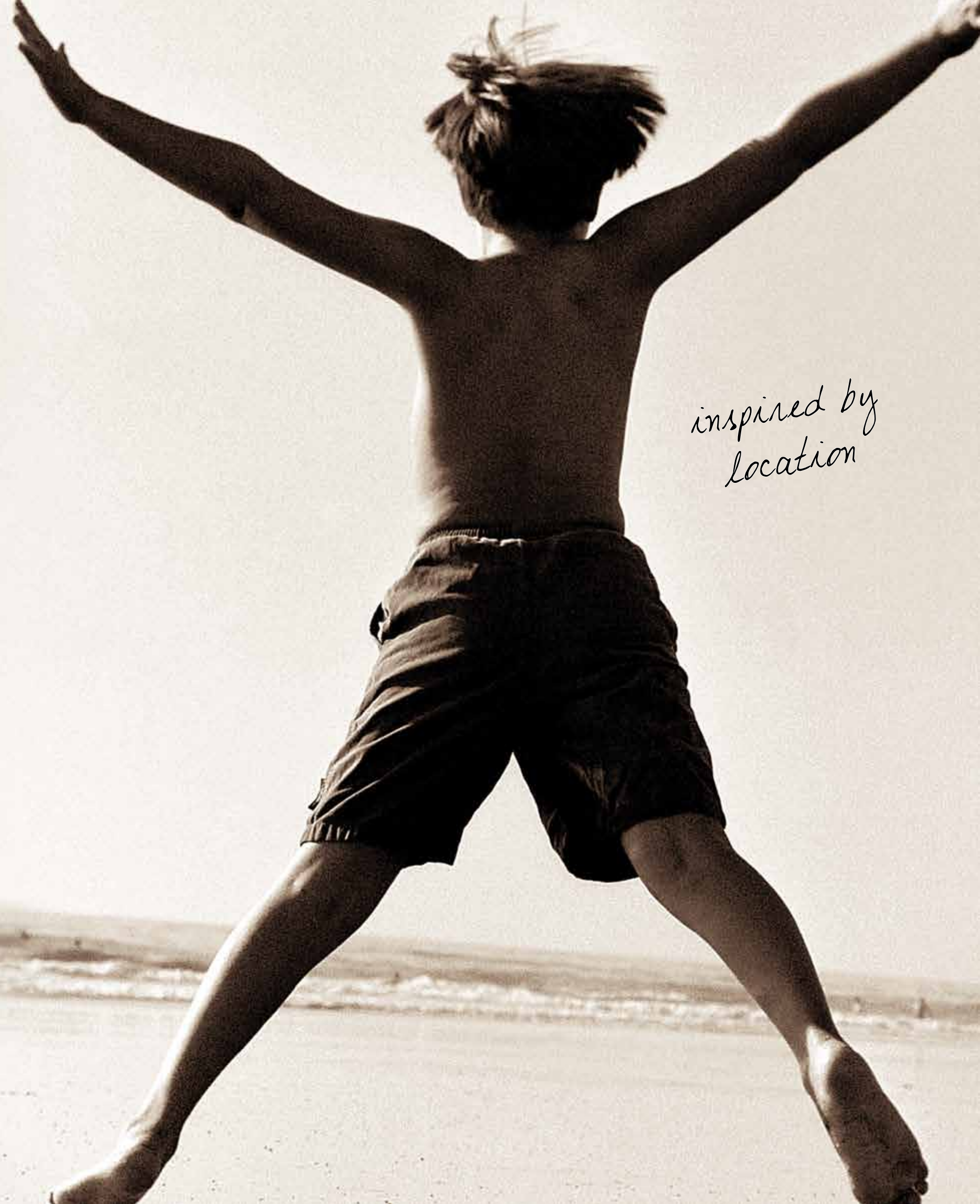


DEBORA AGUIAR

Debora Aguiar Architects

Founded by Debora Aguiar in 1990 with headquarters in São Paulo, Brazil, Debora Aguiar Architects is one of the most important architectural and interior design offices in the country today. Its team of over 100 professionals, including architects, interior designers, and consultants works across several areas of the industry for domestic and international clients. Debora Aguiar Architects' clients include over 200 of the leading construction companies in Brazil. The firm values its long-term relationships with clients and the office is constantly pursuing challenging opportunities to transform creative and innovative ideas into well-executed projects, bringing beauty and sophistication together with comfort, security, dynamism and assertiveness.

Firm Principal Debora Aguiar earned a B.A. in Architecture and Urban Sciences from FAU Mackenzie University in Spain in 1989. In addition to creating and leading Debora Aguiar Architects as an architect and interior designer for 24 years, Debora also has experience as a product designer. Working from initial concept through development, she has designed her own collections of furniture, including tables, consoles, benches, and stools, as well as lighting fixtures. Her product design clients include some of the most renowned companies in the interior design industry in Brazil and around the world.

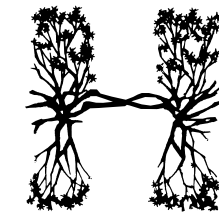


inspired by location

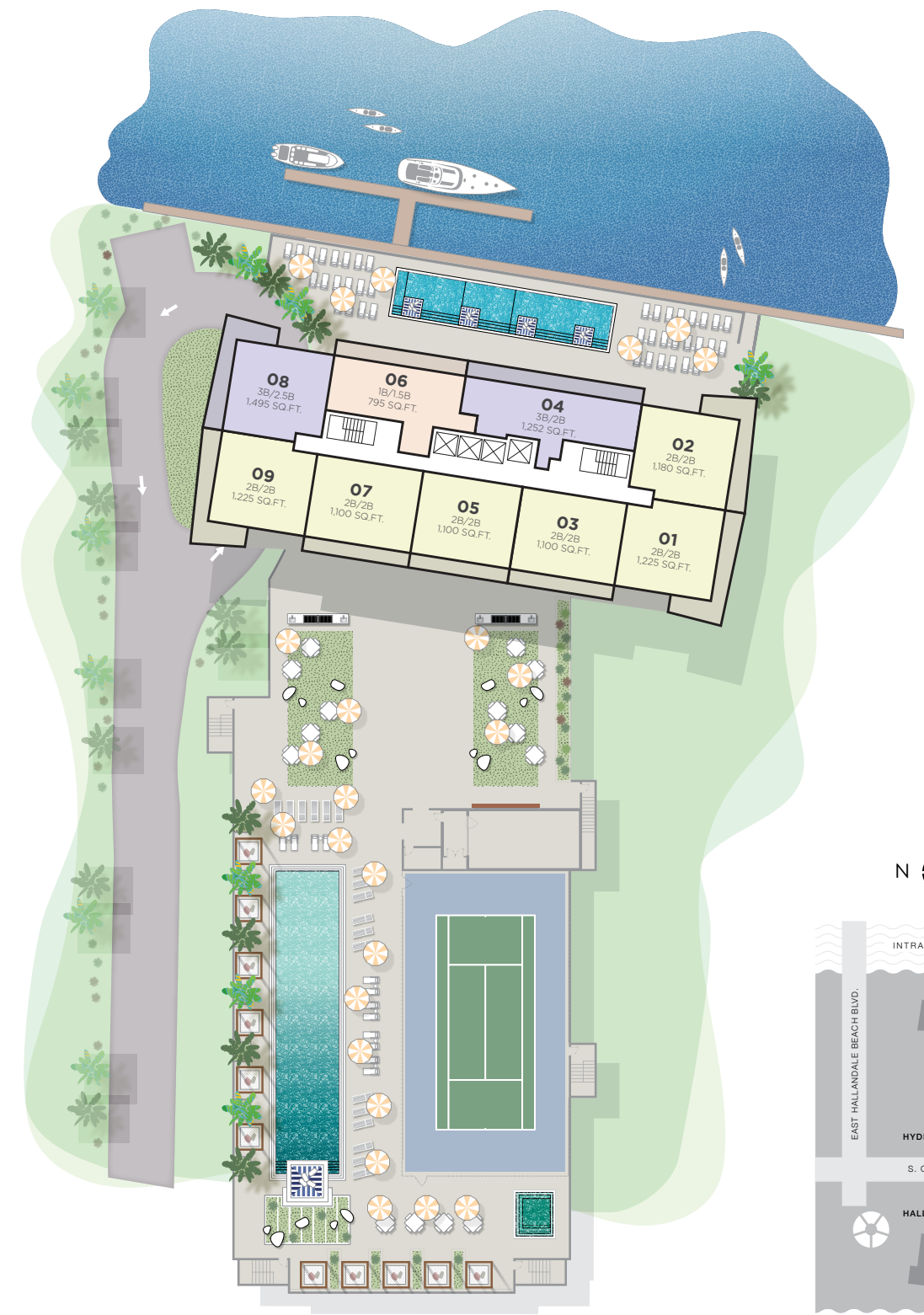
MEET THE TEAM



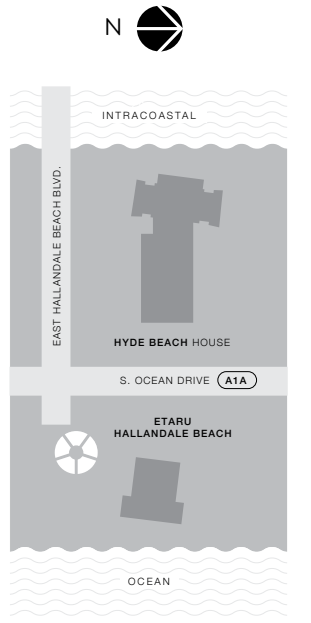
HYDETM
beach house
HOLLYWOOD FLORIDA
RESIDENCE FLOOR PLANS



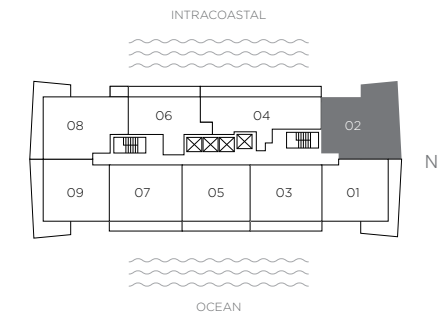
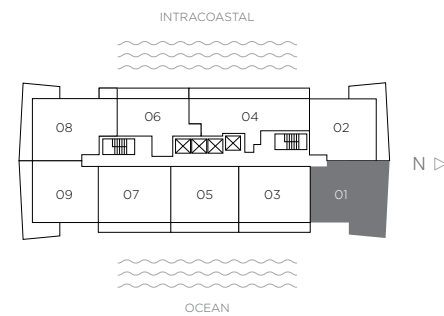
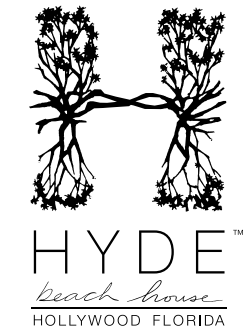
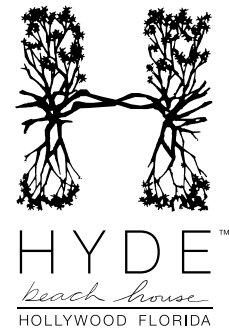
HYDETM
beach house
HOLLYWOOD FLORIDA



SITE PLAN TYPICAL FLOOR



There are various methods for calculating the square footage of a Unit and depending on the method of calculation, the quoted square footage of a Unit may vary. The dimensions in the Unit shown in these floor plans have been calculated from the exterior boundaries of the exterior walls to the centerline of interior demising walls, including common elements such as structural walls and other interior structural components of the building and are greater than the dimensions that would be determined by using the description and definition of the "Unit" set forth in the Prospectus and the Declaration. The measurements of a room set forth on this floor plan are generally taken at the greatest points of each given room (as if the room were a perfect rectangle) without regard for any cutouts. Accordingly, the area of the actual room will typically smaller than the product obtained by multiplying the stated length by the stated width. All dimensions are approximate and may vary with actual construction. All floor plans are subject to change. The furnishings and décor illustrated are not included with the purchase of the Unit. Consult the Prospectus for information regarding what is offered with the Unit and the calculation of the Unit square footage and dimensions.



RESIDENCE 01 2 BEDROOMS 2 BATHS
RESORT UNIT FROM FLOORS 2 - 34 / CONDO UNIT FROM FLOORS 35 - 43

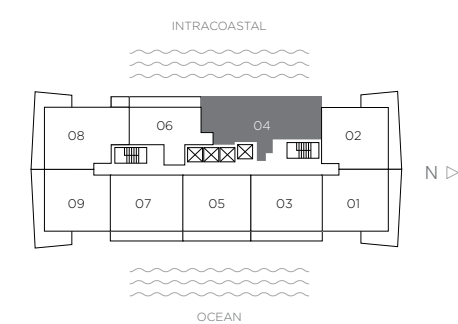
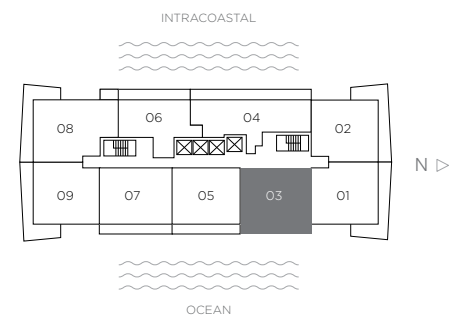
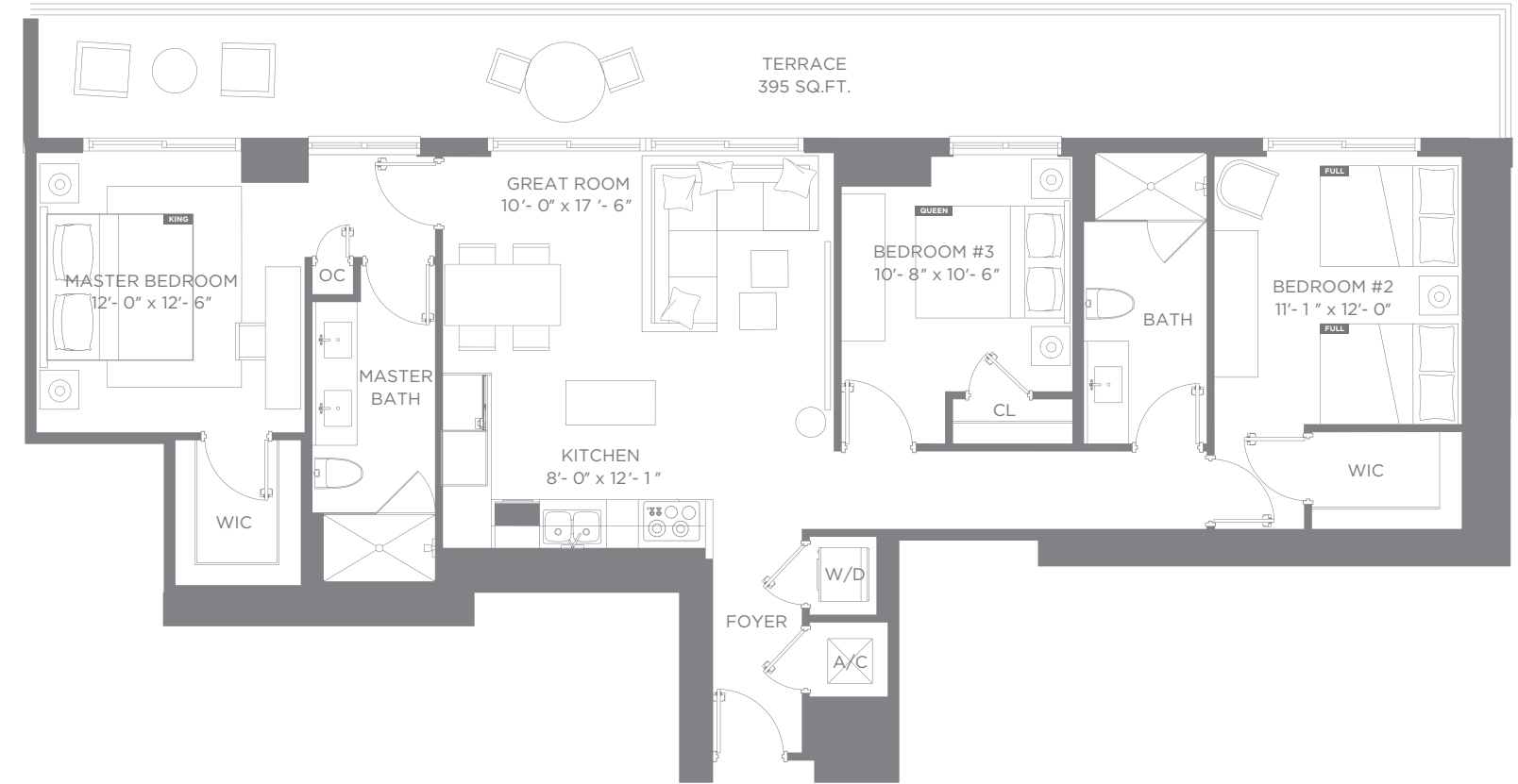
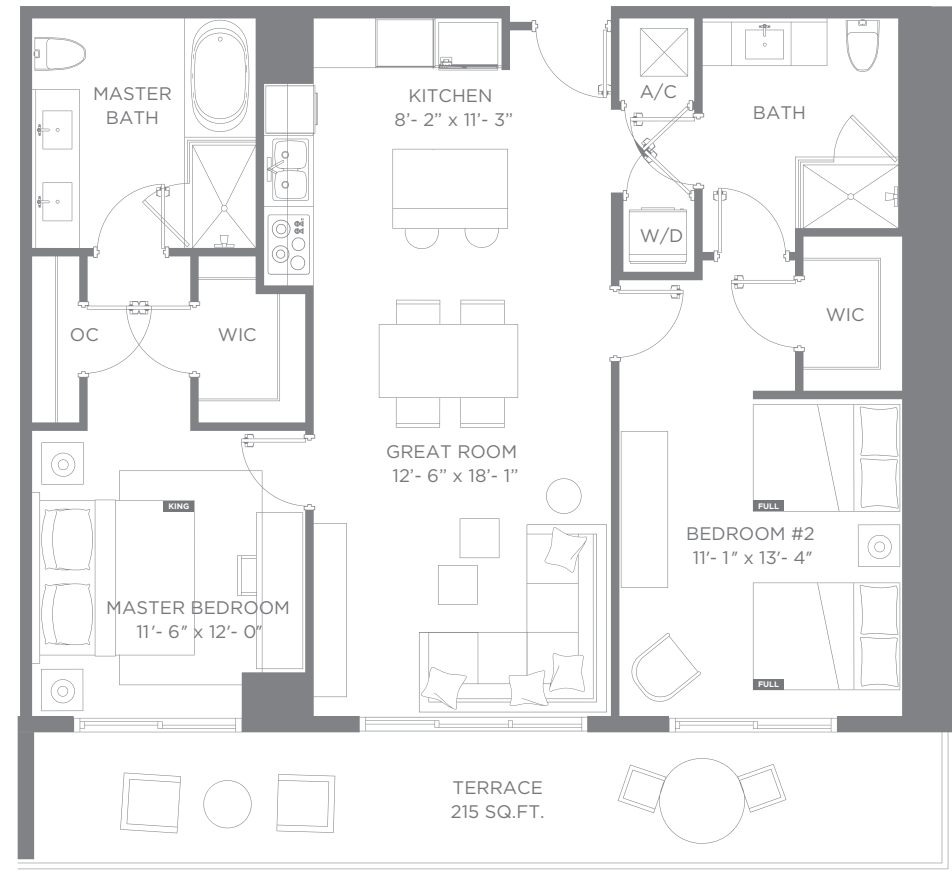
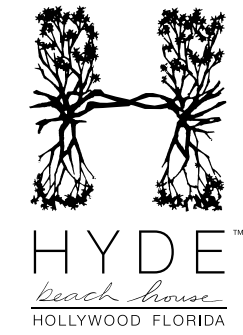
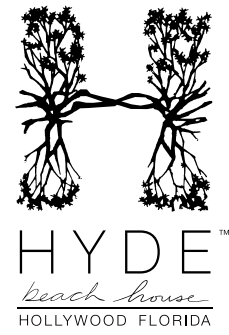
RESIDENCE 02 2 BEDROOMS 2 BATHS
RESORT UNIT FROM FLOORS 2 - 34 / CONDO UNIT FROM FLOORS 35 - 43

Interior 1,225 sq ft / 113.80 m² Terraces 464 sq ft / 43.10 m² Total 1,689 sq ft / 156.90 m²

Interior 1,180 sq ft / 109.62 m² Terraces 395 sq ft / 36.69 m² Total 1,575 sq ft / 146.31 m²

There are various methods for calculating the square footage of a Unit and depending on the method of calculation, the quoted square footage of a Unit may vary. The dimensions in the Unit shown in these floor plans have been calculated from the exterior boundaries of the exterior walls to the centerline of interior demising walls, including common elements such as structural walls and other interior structural components of the building and are greater than the dimensions that would be determined by using the description and definition of the "Unit" set forth in the Prospectus and the Declaration. The measurements of a room set forth on this floor plan are generally taken at the greatest points of each given room (as if the room were a perfect rectangle) without regard for any cutouts. Accordingly, the area of the actual room will typically smaller than the product obtained by multiplying the stated length by the stated width. All dimensions are approximate and may vary with actual construction. All floor plans are subject to change. The furnishings and décor illustrated are not included with the purchase of the Unit. Consult the Prospectus for information regarding what is offered with the Unit and the calculation of the Unit square footage and dimensions.

There are various methods for calculating the square footage of a Unit and depending on the method of calculation, the quoted square footage of a Unit may vary. The dimensions in the Unit shown in these floor plans have been calculated from the exterior boundaries of the exterior walls to the centerline of interior demising walls, including common elements such as structural walls and other interior structural components of the building and are greater than the dimensions that would be determined by using the description and definition of the "Unit" set forth in the Prospectus and the Declaration. The measurements of a room set forth on this floor plan are generally taken at the greatest points of each given room (as if the room were a perfect rectangle) without regard for any cutouts. Accordingly, the area of the actual room will typically smaller than the product obtained by multiplying the stated length by the stated width. All dimensions are approximate and may vary with actual construction. All floor plans are subject to change. The furnishings and décor illustrated are not included with the purchase of the Unit. Consult the Prospectus for information regarding what is offered with the Unit and the calculation of the Unit square footage and dimensions.



RESIDENCE 03 2 BEDROOMS 2 BATHS
 RESORT UNIT FROM FLOORS 7 - 34 / CONDO UNIT FROM FLOORS 35 - 43

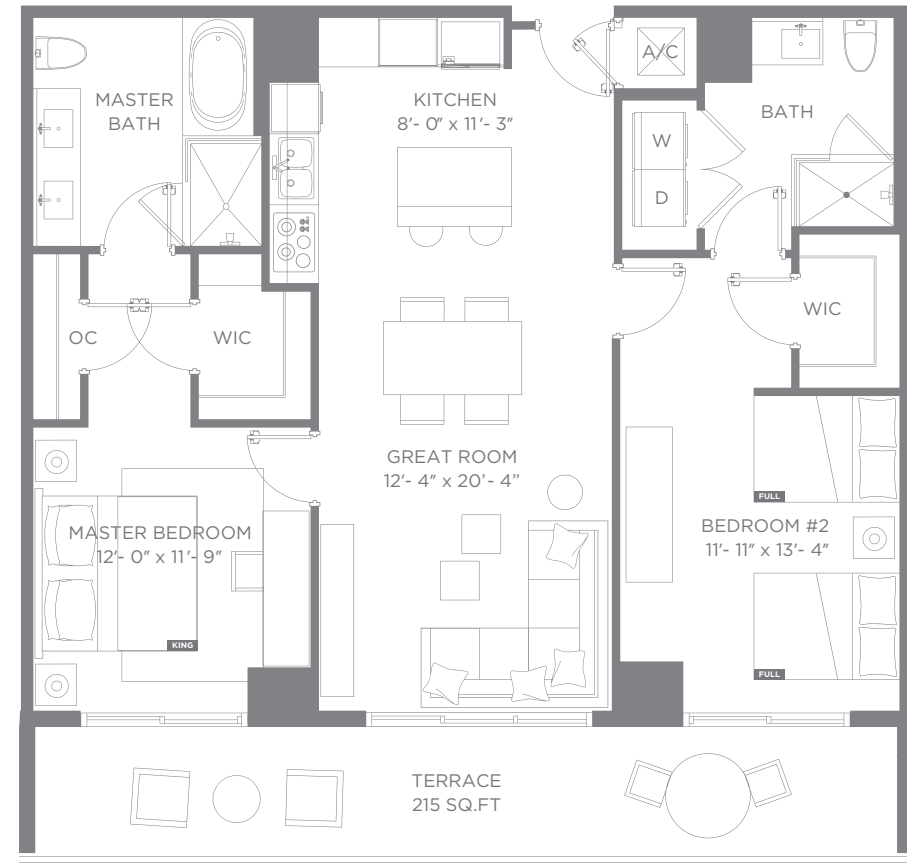
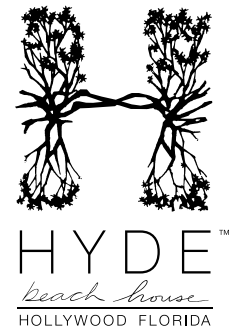
RESIDENCE 04 3 BEDROOM 2 BATHS
 RESORT UNIT FROM FLOORS 2 - 34 / CONDO UNIT FROM FLOORS 35 - 43

Interior 1,100 sq ft / 102.19 m² Terraces 215 sq ft / 19.97 m² Total 1,315 sq ft / 122.16 m²

Interior 1,252 sq ft / 116.31 m² Terraces 395 sq ft / 36.69 m² Total 1,647 sq ft / 153.01 m²

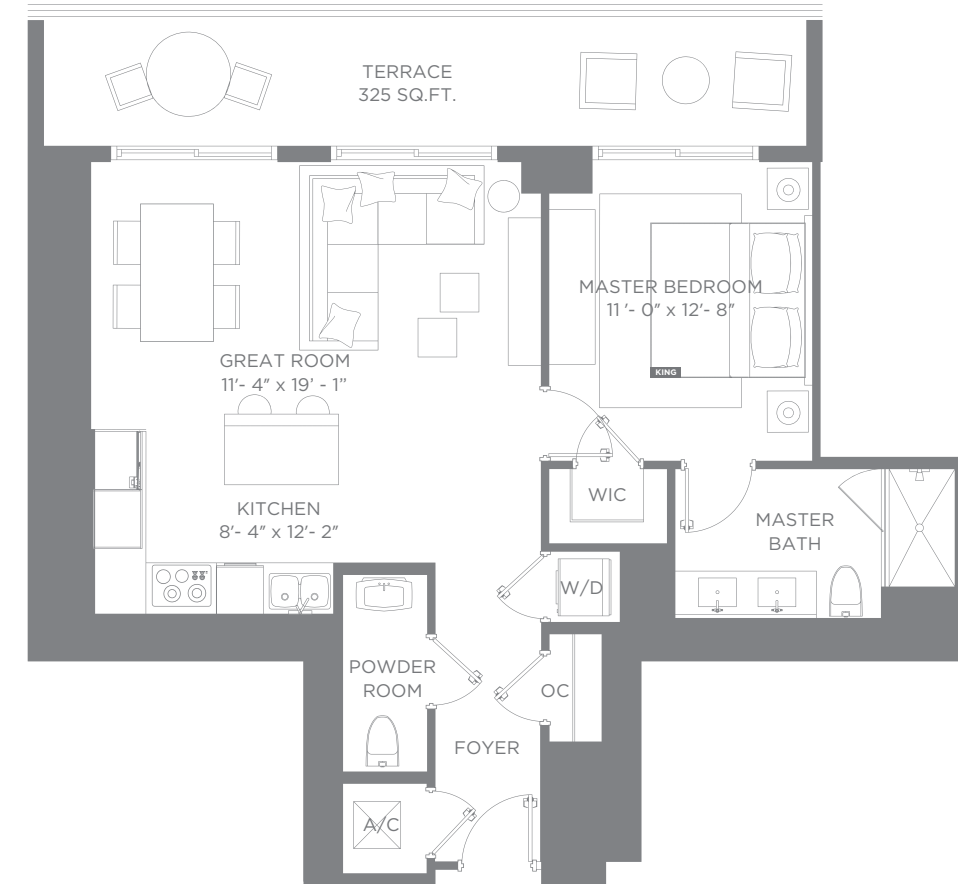
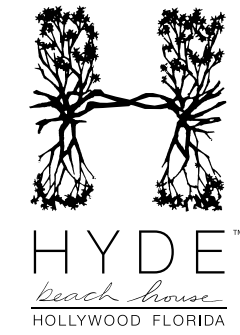
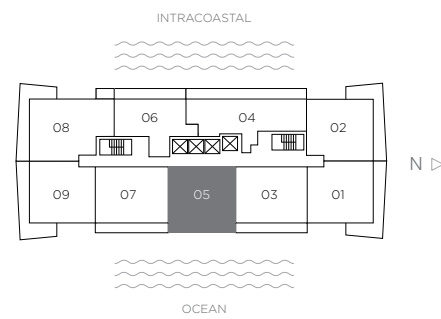
There are various methods for calculating the square footage of a Unit and depending on the method of calculation, the quoted square footage of a Unit may vary. The dimensions in the Unit shown in these floor plans have been calculated from the exterior boundaries of the exterior walls to the centerline of interior demising walls, including common elements such as structural walls and other interior structural components of the building and are greater than the dimensions that would be determined by using the description and definition of the "Unit" set forth in the Prospectus and the Declaration. The measurements of a room set forth on this floor plan are generally taken at the greatest points of each given room (as if the room were a perfect rectangle) without regard for any cutouts. Accordingly, the area of the actual room will typically smaller than the product obtained by multiplying the stated length by the stated width. All dimensions are approximate and may vary with actual construction. All floor plans are subject to change. The furnishings and décor illustrated are not included with the purchase of the Unit. Consult the Prospectus for information regarding what is offered with the Unit and the calculation of the Unit square footage and dimensions.

There are various methods for calculating the square footage of a Unit and depending on the method of calculation, the quoted square footage of a Unit may vary. The dimensions in the Unit shown in these floor plans have been calculated from the exterior boundaries of the exterior walls to the centerline of interior demising walls, including common elements such as structural walls and other interior structural components of the building and are greater than the dimensions that would be determined by using the description and definition of the "Unit" set forth in the Prospectus and the Declaration. The measurements of a room set forth on this floor plan are generally taken at the greatest points of each given room (as if the room were a perfect rectangle) without regard for any cutouts. Accordingly, the area of the actual room will typically smaller than the product obtained by multiplying the stated length by the stated width. All dimensions are approximate and may vary with actual construction. All floor plans are subject to change. The furnishings and décor illustrated are not included with the purchase of the Unit. Consult the Prospectus for information regarding what is offered with the Unit and the calculation of the Unit square footage and dimensions.



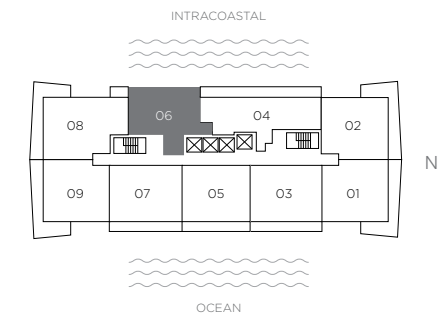
RESIDENCE 05 2 BEDROOMS 2 BATHS
RESORT UNIT FROM FLOORS 7 - 34 / CONDO UNIT FROM FLOORS 35 - 43

Interior 1,100 sq ft / 102.19 m² Terraces 215 sq ft / 19.97 m² Total 1,315 sq ft / 122.16 m²



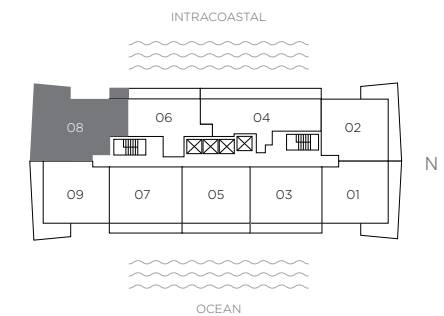
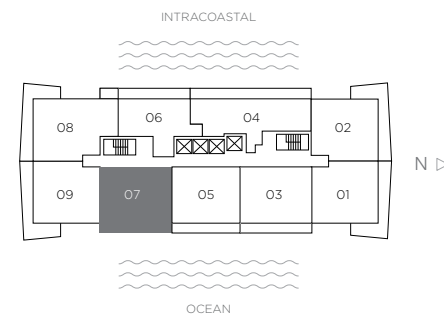
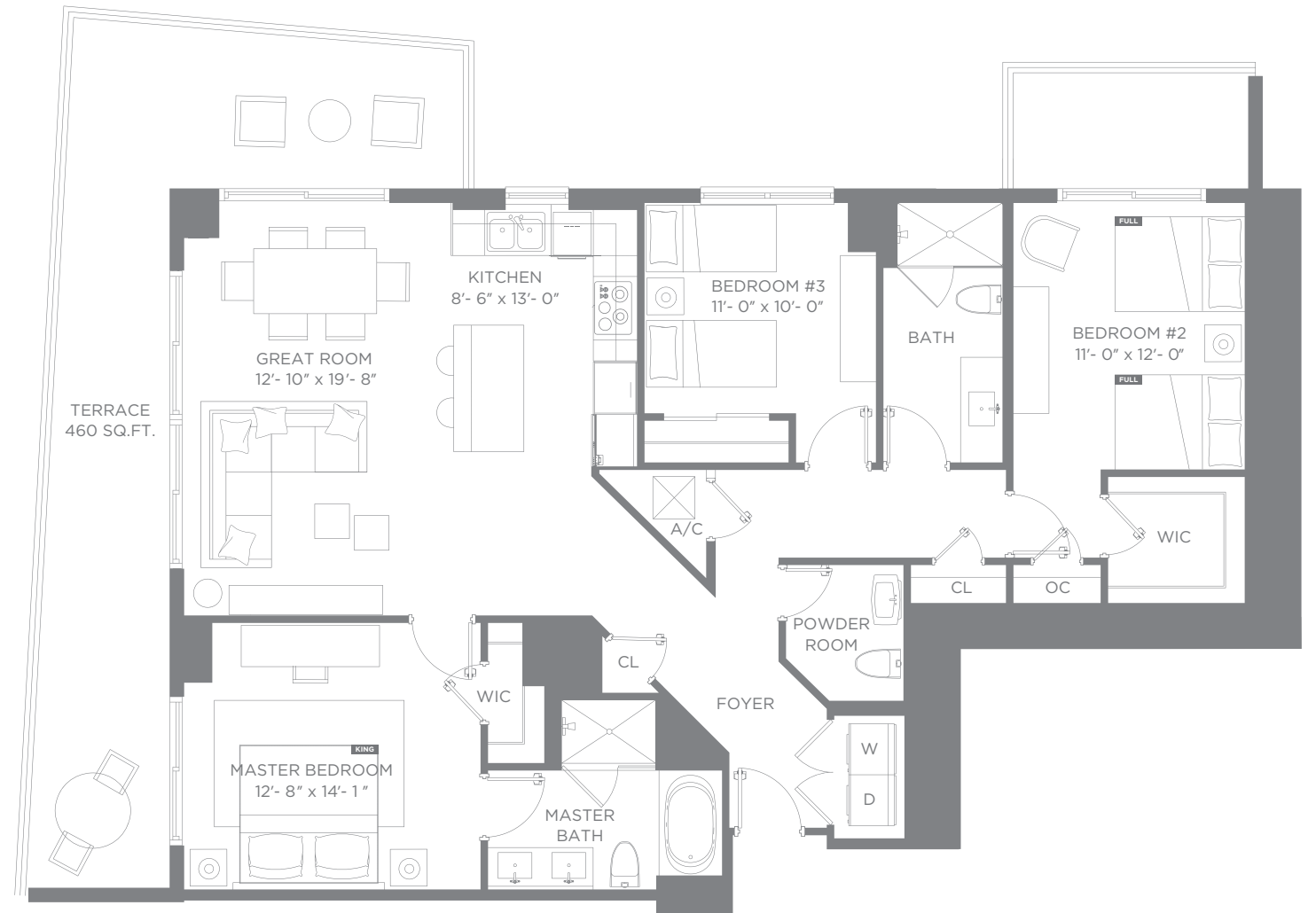
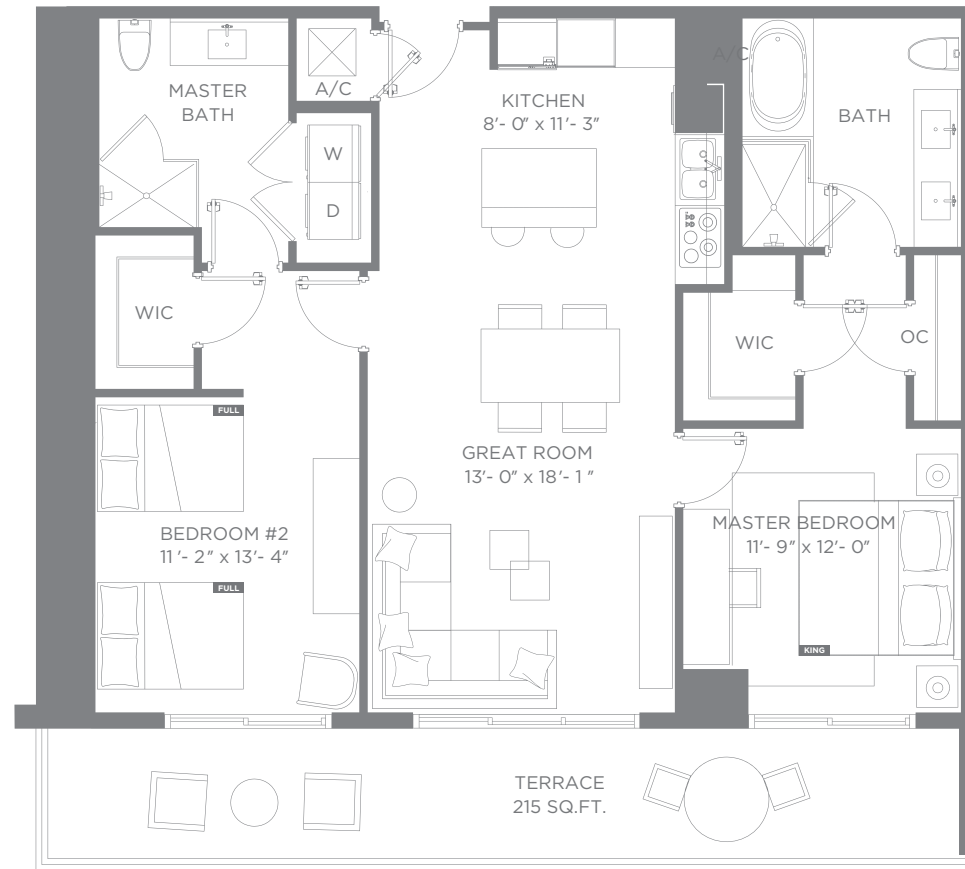
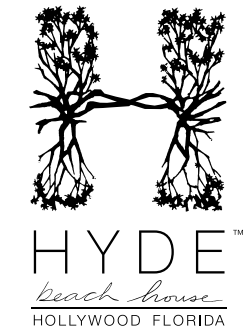
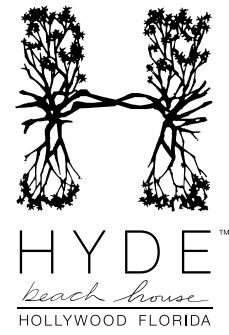
RESIDENCE 06 1 BEDROOMS 1.5 BATHS
RESORT UNIT FROM FLOORS 2 - 34 / CONDO UNIT FROM FLOORS 35 - 43

Interior 795 sq ft / 73.85 m² Terraces 325 sq ft / 30.19 m² Total 1,120 sq ft / 104.05 m²



There are various methods for calculating the square footage of a Unit and depending on the method of calculation, the quoted square footage of a Unit may vary. The dimensions in the Unit shown in these floor plans have been calculated from the exterior boundaries of the exterior walls to the centerline of interior demising walls, including common elements such as structural walls and other interior structural components of the building and are greater than the dimensions that would be determined by using the description and definition of the "Unit" set forth in the Prospectus and the Declaration. The measurements of a room set forth on this floor plan are generally taken at the greatest points of each given room (as if the room were a perfect rectangle) without regard for any cutouts. Accordingly, the area of the actual room will typically smaller than the product obtained by multiplying the stated length by the stated width. All dimensions are approximate and may vary with actual construction. All floor plans are subject to change. The furnishings and décor illustrated are not included with the purchase of the Unit. Consult the Prospectus for information regarding what is offered with the Unit and the calculation of the Unit square footage and dimensions.

There are various methods for calculating the square footage of a Unit and depending on the method of calculation, the quoted square footage of a Unit may vary. The dimensions in the Unit shown in these floor plans have been calculated from the exterior boundaries of the exterior walls to the centerline of interior demising walls, including common elements such as structural walls and other interior structural components of the building and are greater than the dimensions that would be determined by using the description and definition of the "Unit" set forth in the Prospectus and the Declaration. The measurements of a room set forth on this floor plan are generally taken at the greatest points of each given room (as if the room were a perfect rectangle) without regard for any cutouts. Accordingly, the area of the actual room will typically smaller than the product obtained by multiplying the stated length by the stated width. All dimensions are approximate and may vary with actual construction. All floor plans are subject to change. The furnishings and décor illustrated are not included with the purchase of the Unit. Consult the Prospectus for information regarding what is offered with the Unit and the calculation of the Unit square footage and dimensions.



RESIDENCE 07 2 BEDROOMS 2 BATHS
RESORT UNIT FROM FLOORS 7 - 34 / CONDO UNIT FROM FLOORS 35 - 43

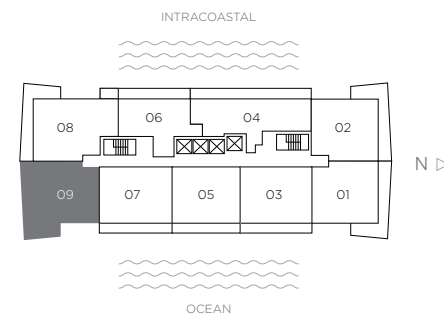
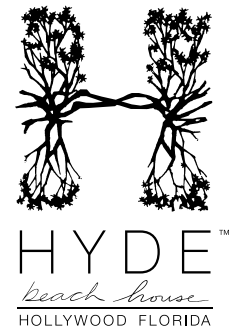
RESIDENCE 08 3 BEDROOMS 2.5 BATHS
RESORT UNIT FROM FLOORS 3 - 34 / CONDO UNIT FROM FLOORS 35 - 41

Interior 1,100 sq ft / 102.19 m² Terraces 215 sq ft / 19.97 m² Total 1,315 sq ft / 122.16 m²

Interior 1,495 sq ft / 138.89 m² Terraces 460 sq ft / 42.73 m² Total 1,955 sq ft / 181.62 m²

There are various methods for calculating the square footage of a Unit and depending on the method of calculation, the quoted square footage of a Unit may vary. The dimensions in the Unit shown in these floor plans have been calculated from the exterior boundaries of the exterior walls to the centerline of interior demising walls, including common elements such as structural walls and other interior structural components of the building and are greater than the dimensions that would be determined by using the description and definition of the "Unit" set forth in the Prospectus and the Declaration. The measurements of a room set forth on this floor plan are generally taken at the greatest points of each given room (as if the room were a perfect rectangle) without regard for any cutouts. Accordingly, the area of the actual room will typically smaller than the product obtained by multiplying the stated length by the stated width. All dimensions are approximate and may vary with actual construction. All floor plans are subject to change. The furnishings and décor illustrated are not included with the purchase of the Unit. Consult the Prospectus for information regarding what is offered with the Unit and the calculation of the Unit square footage and dimensions.

There are various methods for calculating the square footage of a Unit and depending on the method of calculation, the quoted square footage of a Unit may vary. The dimensions in the Unit shown in these floor plans have been calculated from the exterior boundaries of the exterior walls to the centerline of interior demising walls, including common elements such as structural walls and other interior structural components of the building and are greater than the dimensions that would be determined by using the description and definition of the "Unit" set forth in the Prospectus and the Declaration. The measurements of a room set forth on this floor plan are generally taken at the greatest points of each given room (as if the room were a perfect rectangle) without regard for any cutouts. Accordingly, the area of the actual room will typically smaller than the product obtained by multiplying the stated length by the stated width. All dimensions are approximate and may vary with actual construction. All floor plans are subject to change. The furnishings and décor illustrated are not included with the purchase of the Unit. Consult the Prospectus for information regarding what is offered with the Unit and the calculation of the Unit square footage and dimensions.



RESIDENCE 09 2 BEDROOMS 2 BATHS

RESORT UNIT FROM FLOORS 3 - 34 / CONDO UNIT FROM FLOORS 35 - 41

Interior 1,225 sq ft / 113.80 m² Terraces 464 sq ft / 43.10 m² Total 1,689 sq ft / 156.90 m²

There are various methods for calculating the square footage of a Unit and depending on the method of calculation, the quoted square footage of a Unit may vary. The dimensions in the Unit shown in these floor plans have been calculated from the exterior boundaries of the exterior walls to the centerline of interior demising walls, including common elements such as structural walls and other interior structural components of the building and are greater than the dimensions that would be determined by using the description and definition of the "Unit" set forth in the Prospectus and the Declaration. The measurements of a room set forth on this floor plan are generally taken at the greatest points of each given room (as if the room were a perfect rectangle) without regard for any cutouts. Accordingly, the area of the actual room will typically smaller than the product obtained by multiplying the stated length by the stated width. All dimensions are approximate and may vary with actual construction. All floor plans are subject to change. The furnishings and décor illustrated are not included with the purchase of the Unit. Consult the Prospectus for information regarding what is offered with the Unit and the calculation of the Unit square footage and dimensions.



beach



Oral representations cannot be relied upon as correctly stating representations of the developer. For correct representations, make reference to this brochure and the documents required by Section 718.503, Florida Statutes, to be furnished by a developer to a buyer or lessee. This is not intended to be an offer to sell, or solicitation of an offer to buy, condominium units in any other jurisdiction where prohibited by law, and your eligibility for purchase will depend upon your state of residency. This offering is made only by the Prospectus for the condominium development project (hereinafter the "Condominium") and no statement should be relied upon if not made in the Prospectus provided to you by the Developer (as "Developer" is defined herein below).

Any sketches, renderings, or photographs depicting lifestyle, amenities, food services, resort services, unit finishes, designs, materials, furnishings, plans, specifications, or art contained in this brochure are proposed only, and the Developer reserves the right to modify, revise, or withdraw any or all of the same in its sole discretion and without prior notice. Dimensions and square footage are approximate and may vary depending on how measured and based upon actual construction. Also, locations and layouts of windows, doors, closets, plumbing fixtures, and structural and architectural design elements may vary from concept to actual construction. All depictions of appliances, plumbing fixtures, counters, countertops, cabinets, soffits, floor coverings and other matters of design and décor detail are conceptual and are not necessarily included in each Unit. These drawings, images, and depictions shown are conceptual only and should not be relied upon as representations, express or implied, of the final detail of the Condominium exterior or interior of the residences. All improvements, designs and construction are subject to first obtaining the appropriate federal, state and local permits and approvals for same which may require the Developer to alter any design, floor plan, amenity, or layout depicted. Accordingly, the Developer expressly reserves the right to make modifications, revisions, and changes it deems desirable or necessary in its sole and absolute discretion. The views depicted are intended to evoke the feeling of beach community lifestyle and are not intended to depict the actual project or views from any Unit. The Prospectus is not a securities offering. No statements or representations have been made by Developer, or any of its agents, employees or representatives with respect to any potential for future profit, future appreciation in value, investment opportunity potential, rental income potential, the ability or willingness of Developer or its affiliates to assist Buyer in financing, renting (other than the existence of a voluntary rental program) or selling the Unit, the economic or tax benefits to be derived from the managerial efforts of you as the owner or of any third party as a result of renting the Unit or other units, or the economic or tax benefits to be derived from ownership of the Unit. The Developer, its agents, employees, and representatives are neither investment advisors nor tax advisors and any statement(s) that may have been made with respect to the investment opportunity potential, or tax benefits of ownership, should not be relied upon in your decision to purchase a Unit. The Developer is not incorporated in, located in, nor a resident of, New York. This is not intended to be an offer to sell, or solicitation of an offer to buy, condominium units in New York or to residents of New York, or in any other jurisdiction where prohibited by law unless the condominium is registered in such jurisdictions or exempt. Your eligibility for purchase will depend upon your state of residency. This offering is not directed to any person or entity in New York by, or on behalf of, the developer or anyone acting with the developer's knowledge. No purchase or sale shall take place as a result of this offering, until registration and filing requirements are met, or exemptions are confirmed. Certain nearby attractions, shopping venues, restaurants, and activities referenced or identified in this publication are off-site and may not be controlled by the Developer. Information provided herein regarding these off-site attractions, developments, and venues, whether existing at the time of this publication or proposed, have been obtained from public records and other sources of public information and is accurate, based upon those public sources, as of the date of this publication. However, there is no guarantee that any, or all such off-site attractions, shopping venues, restaurants, and activities will exist or be fully developed, as depicted, or that there would not be changes or substitutions of the attractions and venues nearby.

This Condominium is being developed by 4000 South Ocean Property Owner, LLLP ("Developer" as this defined term is used above and hereinafter) which has a limited right to use the trade names, logos, images, and trademarks depicted pursuant to license agreements. Although the registered trade names and marks of each are used by Developer pursuant to license agreements. The Related Group, SBE Licensing, LLC and SBE Hotel Group, LLC are not Developer. HYDE® is a registered trademark of SBE Licensing, LLC and is used pursuant to a license agreement. If this license is terminated or expires without renewal, the Condominium will no longer be associated with, or have any right to use, the HYDE® brand trade names or trademarks. With respect to any and all matters relating to the sales and/or marketing and/or development of the Condominium and/or your purchase of any Unit in the Condominium, any and all statements, disclosures and/or representations shall be deemed made by Developer and not by the Related Group, nor by SBE Hotel Group, LLC nor by SBE Licensing, LLC, or any of their respective affiliates. The managing entities, hotels, artwork, designers, contributing artists, interior designers, fitness facilities, amenities, services, and restaurants proposed within the Condominium and referred to herein are accurate as of the date of this publication; however, there is no guarantee that the any proposed managing entities, hotels, artwork, designers, contributing artists, interior designers, fitness facilities, amenities, services, or restaurants will be involved as depicted or at all upon , or following the completion of, the Condominium. The art depicted or described may be exchanged for comparable art at the Developer's discretion. Art may be loaned to, rather than owned by, the Association. The Developer reserves the right, in the Developer's sole and absolute discretion, to change managing entities, hotels, artwork, contributing artists, names, brands, interior designers, fitness facilities, amenities, or restaurants with any such designers, artists, features, services, brands, amenities, and facilities of comparable quality as the Developer deems necessary or to be in the best interest of the Condominium. References to the beach club is a reference to a public facility that offers membership opportunity. Certain amenities may not be included in Common Expenses and may only be available upon payment of a fee by the Unit owner. Certain amenities may be available for so long as the Condominium Association's contractual arrangement for such privileges continue at the Association's discretion. Consult the Prospectus. No real estate broker or sales agent (whether engaged by Developer or not) is authorized to make any representations or other statements (verbal or written) regarding the Condominium , and no agreements with, deposits paid to, or other arrangements made with, any real estate broker or agents are binding on the Developer. All prices are subject to change at any time and without notice, and do not include optional features, design packages, furniture packages, or premiums for upgraded Units. Please check with the sales center for the most current pricing. The project graphics, renderings, photographs, and text provided herein are copyrighted works owned by the Developer unless otherwise credited. Reproduction of any brochure content for private or commercial use is not authorized. This Condominium is not oceanfront or beachfront, but is inter-coastal. Consult the Prospectus for all terms, conditions, specifications, and dimensions, as well as estimated expenses to unit owners and items included with purchase. 2015 © 4000 South Ocean Property Owner, LLLP with all rights reserved by Developer unless otherwise stated.