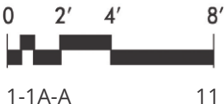


ONE BEDROOM, 1-1A-A

1 BATHROOM ▪ 778 Square Feet



LUXURY APARTMENTS



ONE BEDROOM, 1-1A-A

— **The Flats Residences** were inspired by international luxury with a thoughtful array of interior finishes. Informed and inspired by international luxury resort design, while perfectly complementing CityPlace in its sleek, urban lifestyle sensibility. The color palette of your apartment is based on the light as it touches surfaces with airy brightness, spotlighting chrome, wood and delicately-hued quartz

— **Artistic Kitchens:** Imported European cabinets. Premium hardware & drawer pulls coordinate this artistic design. **Caesarstone®** quartz counter tops. **Icon Glass®** kitchen back-splash is a mega-sized mosaic that shouts luxury—very upscale and modern, and very dramatic. Sleek **Whirlpool® Stainless Steel Energy Star** appliances. Dramatic under-cabinet lighting. Under mount, **Zero Radius Kitchen Sinks**. **Opella®** kitchen faucet with a curved coil-spring design

— **Provocative Spa-Inspired Bathrooms:** Imported European vanities with premium hardware & drawer pulls. Designer custom framed mirror. River White Granite countertops and backsplashes. Our **Kohler Spa Soaking Bathtubs** are sleek with an ergonomic design **Milano Bathroom Faucet** is an elegant addition to your bathroom with its unique lavatory faucet. Rain shower head. **Opella** china bathroom sink. **Moen®** adjustable curved shower rod in brushed nickel.

— **Radiant & Compelling Living Areas:** Lush, barefoot-friendly carpeting and imported, wood-styled tiles throughout the living spaces. **Tile Soundproofing Underlayment.** This means that under your tile we have placed soundproofing. We understand sound transfer and work to reduce transfer for your living experience.

— Private balconies. Time-saving, conveniently-located energy star washers and dryers in every apartment residence. Energy-efficient hurricane resistant windows and sliding glass doors. Contemporary ceiling fans.

— USB Receptacle: 2 high-speed **USB Charging Ports** in the main bedroom and kitchen.

TheFlatsAtCityPlace.Com
📞 (305) 800-3528

3555 NW 83 Avenue, Suite 100; Doral, FL 33122
InfoFlats@relatedgroup.com



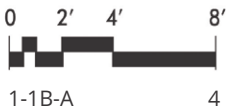
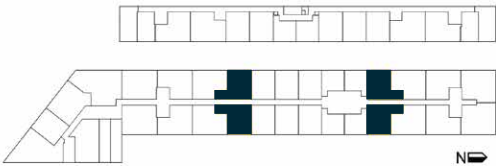
ORAL REPRESENTATIONS CANNOT BE RELIED UPON AS CORRECTLY STATING THE REPRESENTATIONS OF THE LESSOR. ALL SQUARE FOOTAGES QUOTED ARE APPROXIMATE AND ARE CONDITIONED SPACE, FLOORPLANS AND DEVELOPMENT PLANS ARE SUBJECT TO CHANGE.

ONE BEDROOM, 1-1B-A

1 BATHROOM ▪ 903 Square Feet



LUXURY APARTMENTS



ONE BEDROOM, 1-1B-A

— **The Flats Residences** were inspired by international luxury with a thoughtful array of interior finishes. Informed and inspired by international luxury resort design, while perfectly complementing CityPlace in its sleek, urban lifestyle sensibility. The color palette of your apartment is based on the light as it touches surfaces with airy brightness, spotlighting chrome, wood and delicately-hued quartz

— **Artistic Kitchens:** Imported European cabinets. Premium hardware & drawer pulls coordinate this artistic design. **Caesarstone®** quartz counter tops. **Icon Glass®** kitchen back-splash is a mega-sized mosaic that shouts luxury—very upscale and modern, and very dramatic. Sleek **Whirlpool® Stainless Steel Energy Star** appliances. Dramatic under-cabinet lighting. Under mount, **Zero Radius Kitchen Sinks**. **Opella®** kitchen faucet with a curved coil-spring design

— **Provocative Spa-Inspired Bathrooms:** Imported European vanities with premium hardware & drawer pulls. Designer custom framed mirror. River White Granite countertops and backsplashes. Our **Kohler Spa Soaking Bathtubs** are sleek with an ergonomic design **Milano Bathroom Faucet** is an elegant addition to your bathroom with its unique lavatory faucet. Rain shower head. **Opella** china bathroom sink. **Moen®** adjustable curved shower rod in brushed nickel.

— **Radiant & Compelling Living Areas:** Lush, barefoot-friendly carpeting and imported, wood-styled tiles throughout the living spaces. **Tile Soundproofing Underlayment.** This means that under your tile we have placed soundproofing. We understand sound transfer and work to reduce transfer for your living experience.

— Private balconies. Time-saving, conveniently-located energy star washers and dryers in every apartment residence. Energy-efficient hurricane resistant windows and sliding glass doors. Contemporary ceiling fans.

— USB Receptacle: 2 high-speed **USB Charging Ports** in the main bedroom and kitchen.

TheFlatsAtCityPlace.Com
📞 (305) 800-3528

3555 NW 83 Avenue, Suite 100; Doral, FL 33122
InfoFlats@relatedgroup.com



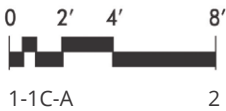
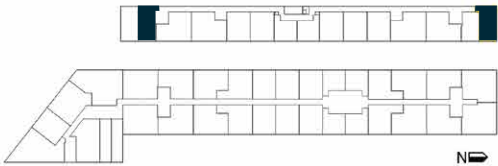
ORAL REPRESENTATIONS CANNOT BE RELIED UPON AS CORRECTLY STATING THE REPRESENTATIONS OF THE LESSOR. ALL SQUARE FOOTAGES QUOTED ARE APPROXIMATE AND ARE CONDITIONED SPACE, FLOORPLANS AND DEVELOPMENT PLANS ARE SUBJECT TO CHANGE.

ONE BEDROOM, 1-1C-A

1 BATHROOM ▪ 704 Square Feet



LUXURY APARTMENTS



ONE BEDROOM, 1-1C-A

— **The Flats Residences** were inspired by international luxury with a thoughtful array of interior finishes. Informed and inspired by international luxury resort design, while perfectly complementing CityPlace in its sleek, urban lifestyle sensibility. The color palette of your apartment is based on the light as it touches surfaces with airy brightness, spotlighting chrome, wood and delicately-hued quartz

— **Artistic Kitchens:** Imported European cabinets. Premium hardware & drawer pulls coordinate this artistic design. **Caesarstone®** quartz counter tops. **Icon Glass®** kitchen back-splash is a mega-sized mosaic that shouts luxury—very upscale and modern, and very dramatic. Sleek **Whirlpool® Stainless Steel Energy Star** appliances. Dramatic under-cabinet lighting. Under mount, **Zero Radius Kitchen Sinks**. **Opella®** kitchen faucet with a curved coil-spring design

— **Provocative Spa-Inspired Bathrooms:** Imported European vanities with premium hardware & drawer pulls. Designer custom framed mirror. River White Granite countertops and backsplashes. Our **Kohler Spa Soaking Bathtubs** are sleek with an ergonomic design **Milano Bathroom Faucet** is an elegant addition to your bathroom with its unique lavatory faucet. Rain shower head. **Opella** china bathroom sink. **Moen®** adjustable curved shower rod in brushed nickel.

— **Radiant & Compelling Living Areas:** Lush, barefoot-friendly carpeting and imported, wood-styled tiles throughout the living spaces. **Tile Soundproofing Underlayment.** This means that under your tile we have placed soundproofing. We understand sound transfer and work to reduce transfer for your living experience.

— Private balconies. Time-saving, conveniently-located energy star washers and dryers in every apartment residence. Energy-efficient hurricane resistant windows and sliding glass doors. Contemporary ceiling fans.

— USB Receptacle: 2 high-speed **USB Charging Ports** in the main bedroom and kitchen.

TheFlatsAtCityPlace.Com
📞 (305) 800-3528

3555 NW 83 Avenue, Suite 100; Doral, FL 33122
InfoFlats@relatedgroup.com



ORAL REPRESENTATIONS CANNOT BE RELIED UPON AS CORRECTLY STATING THE REPRESENTATIONS OF THE LESSOR. ALL SQUARE FOOTAGES QUOTED ARE APPROXIMATE AND ARE CONDITIONED SPACE, FLOORPLANS AND DEVELOPMENT PLANS ARE SUBJECT TO CHANGE.

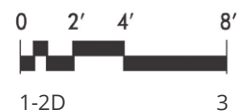
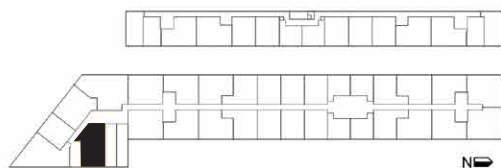
ONE BEDROOM, DEN, OVAL, 1-2D

2 BATHROOMS ▪ 1,169 Square Feet



THEFLATS

LUXURY APARTMENTS



ONE BEDROOM, DEN, OVAL, 1-2D

— **The Flats Residences** were inspired by international luxury with a thoughtful array of interior finishes. Informed and inspired by international luxury resort design, while perfectly complementing CityPlace in its sleek, urban lifestyle sensibility. The color palette of your apartment is based on the light as it touches surfaces with airy brightness, spotlighting chrome, wood and delicately-hued quartz

— **Artistic Kitchens:** Imported European cabinets. Premium hardware & drawer pulls coordinate this artistic design. **Caesarstone®** quartz counter tops. **Icon Glass®** kitchen back-splash is a mega-sized mosaic that shouts luxury—very upscale and modern, and very dramatic. Sleek **Whirlpool® Stainless Steel Energy Star** appliances. Dramatic under-cabinet lighting. Under mount, **Zero Radius Kitchen Sinks**. **Opella®** kitchen faucet with a curved coil-spring design

— **Provocative Spa-Inspired Bathrooms:** Imported European vanities with premium hardware & drawer pulls. Designer custom framed mirror. River White Granite countertops and backsplashes. Our **Kohler Spa Soaking Bathtubs** are sleek with an ergonomic design **Milano Bathroom Faucet** is an elegant addition to your bathroom with its unique lavatory faucet. Rain shower head. **Opella** china bathroom sink. **Moen®** adjustable curved shower rod in brushed nickel.

— **Radiant & Compelling Living Areas:** Lush, barefoot-friendly carpeting and imported, wood-styled tiles throughout the living spaces. **Tile Soundproofing Underlayment.** This means that under your tile we have placed soundproofing. We understand sound transfer and work to reduce transfer for your living experience.

— Private balconies. Time-saving, conveniently-located energy star washers and dryers in every apartment residence. Energy-efficient hurricane resistant windows and sliding glass doors. Contemporary ceiling fans.

— USB Receptacle: 2 high-speed **USB Charging Ports** in the main bedroom and kitchen.

TheFlatsAtCityPlace.Com
📞 (305) 800-3528

3555 NW 83 Avenue, Suite 100; Doral, FL 33122
InfoFlats@relatedgroup.com



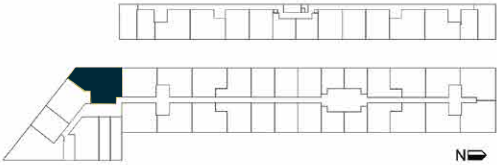
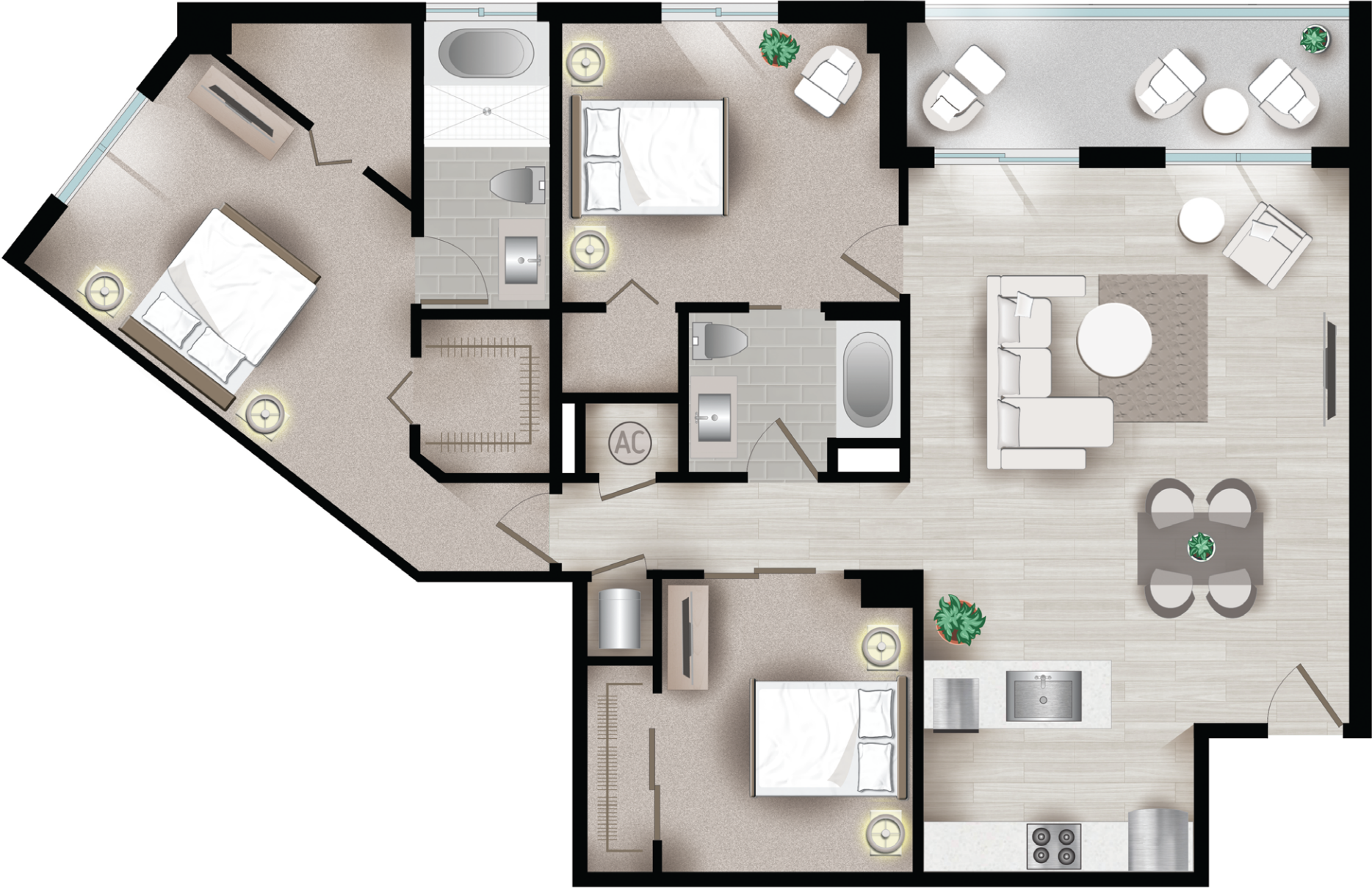
ORAL REPRESENTATIONS CANNOT BE RELIED UPON AS CORRECTLY STATING THE REPRESENTATIONS OF THE LESSOR. ALL SQUARE FOOTAGES QUOTED ARE APPROXIMATE AND ARE CONDITIONED SPACE, FLOORPLANS AND DEVELOPMENT PLANS ARE SUBJECT TO CHANGE.

TWO BEDROOMS, DEN, OVAL A2-2D

2 BATHROOMS • 1,518 Square Feet



LUXURY APARTMENTS



TWO BEDROOMS, DEN, OVAL A2-2D

- **The Flats Residences** were inspired by international luxury with a thoughtful array of interior finishes. Informed and inspired by international luxury resort design, while perfectly complementing CityPlace in its sleek, urban lifestyle sensibility.
- The color palette of your apartment is based on the light as it touches surfaces with airy brightness, spotlighting chrome, wood and delicately-hued quartz
- **Artistic Kitchens:** Imported European cabinets. Premium hardware & drawer pulls coordinate this artistic design.
- **Caesarstone®** quartz counter tops.
- **Icon Glass®** kitchen back-splash is a mega-sized mosaic that shouts luxury—very upscale and modern, and very dramatic.
- Sleek **Whirlpool® Stainless Steel Energy Star** appliances.
- Dramatic under-cabinet lighting.
- Under mount, **Zero Radius Kitchen Sinks.**
- **Opella®** kitchen faucet with a curved coil-spring design
- **Provocative Spa-Inspired Bathrooms:** Imported European vanities with premium hardware & drawer pulls.
- Designer custom framed mirror.
- River White Granite countertops and backsplashes.

- Our **Kohler Spa Soaking Bathtubs** are sleek with an ergonomic design
- **Milano Bathroom Faucet** is an elegant addition to your bathroom with its unique lavatory faucet.
- Rain shower head.
- **Opella** china bathroom sink.
- **Moen®** adjustable curved shower rod in brushed nickel.
- **Radiant & Compelling Living Areas:** Lush, barefoot-friendly carpeting and imported, wood-styled tiles throughout the living spaces.
- **Tile Soundproofing Underlayment.** This means that under your tile we have placed soundproofing. We understand sound transfer and work to reduce transfer for your living experience.
- Private balconies.
- Time-saving, conveniently-located energy star washers and dryers in every apartment residence.
- Energy-efficient hurricane resistant windows and sliding glass doors.
- Contemporary ceiling fans.
- USB Receptacle: 2 high-speed **USB Charging Ports** in the main bedroom and kitchen.

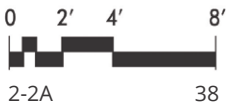
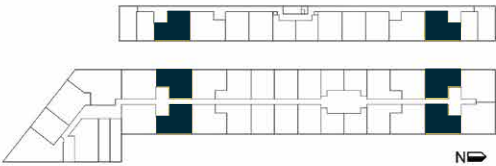


TWO BEDROOMS 2-2A

2 BATHROOMS ▪ 975 Square Feet



LUXURY APARTMENTS



TWO BEDROOMS 2-2A

— **The Flats Residences** were inspired by international luxury with a thoughtful array of interior finishes. Informed and inspired by international luxury resort design, while perfectly complementing CityPlace in its sleek, urban lifestyle sensibility. The color palette of your apartment is based on the light as it touches surfaces with airy brightness, spotlighting chrome, wood and delicately-hued quartz

— **Artistic Kitchens:** Imported European cabinets. Premium hardware & drawer pulls coordinate this artistic design. **Caesarstone®** quartz counter tops. **Icon Glass®** kitchen back-splash is a mega-sized mosaic that shouts luxury—very upscale and modern, and very dramatic. Sleek **Whirlpool® Stainless Steel Energy Star** appliances. Dramatic under-cabinet lighting. Under mount, **Zero Radius Kitchen Sinks**. **Opella®** kitchen faucet with a curved coil-spring design

— **Provocative Spa-Inspired Bathrooms:** Imported European vanities with premium hardware & drawer pulls. Designer custom framed mirror. River White Granite countertops and backsplashes. Our **Kohler Spa Soaking Bathtubs** are sleek with an ergonomic design **Milano Bathroom Faucet** is an elegant addition to your bathroom with its unique lavatory faucet. Rain shower head. **Opella** china bathroom sink. **Moen®** adjustable curved shower rod in brushed nickel.

— **Radiant & Compelling Living Areas:** Lush, barefoot-friendly carpeting and imported, wood-styled tiles throughout the living spaces. **Tile Soundproofing Underlayment.** This means that under your tile we have placed soundproofing. We understand sound transfer and work to reduce transfer for your living experience.

— Private balconies. Time-saving, conveniently-located energy star washers and dryers in every apartment residence. Energy-efficient hurricane resistant windows and sliding glass doors. Contemporary ceiling fans.

— USB Receptacle: 2 high-speed **USB Charging Ports** in the main bedroom and kitchen.

TheFlatsAtCityPlace.Com
📞 (305) 800-3528

3555 NW 83 Avenue, Suite 100; Doral, FL 33122
InfoFlats@relatedgroup.com



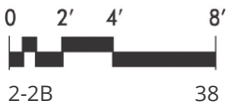
ORAL REPRESENTATIONS CANNOT BE RELIED UPON AS CORRECTLY STATING THE REPRESENTATIONS OF THE LESSOR. ALL SQUARE FOOTAGES QUOTED ARE APPROXIMATE AND ARE CONDITIONED SPACE, FLOORPLANS AND DEVELOPMENT PLANS ARE SUBJECT TO CHANGE.

TWO BEDROOMS 2-2B

2 BATHROOMS • 992 Square Feet



LUXURY APARTMENTS



TWO BEDROOMS 2-2B

— **The Flats Residences** were inspired by international luxury with a thoughtful array of interior finishes. Informed and inspired by international luxury resort design, while perfectly complementing CityPlace in its sleek, urban lifestyle sensibility. The color palette of your apartment is based on the light as it touches surfaces with airy brightness, spotlighting chrome, wood and delicately-hued quartz

— **Artistic Kitchens:** Imported European cabinets. Premium hardware & drawer pulls coordinate this artistic design. **Caesarstone®** quartz counter tops. **Icon Glass®** kitchen back-splash is a mega-sized mosaic that shouts luxury—very upscale and modern, and very dramatic. Sleek **Whirlpool® Stainless Steel Energy Star** appliances. Dramatic under-cabinet lighting. Under mount, **Zero Radius Kitchen Sinks**. **Opella®** kitchen faucet with a curved coil-spring design

— **Provocative Spa-Inspired Bathrooms:** Imported European vanities with premium hardware & drawer pulls. Designer custom framed mirror. River White Granite countertops and backsplashes. Our **Kohler Spa Soaking Bathtubs** are sleek with an ergonomic design **Milano Bathroom Faucet** is an elegant addition to your bathroom with its unique lavatory faucet. Rain shower head. **Opella** china bathroom sink. **Moen®** adjustable curved shower rod in brushed nickel.

— **Radiant & Compelling Living Areas:** Lush, barefoot-friendly carpeting and imported, wood-styled tiles throughout the living spaces. **Tile Soundproofing Underlayment.** This means that under your tile we have placed soundproofing. We understand sound transfer and work to reduce transfer for your living experience.

— Private balconies. Time-saving, conveniently-located energy star washers and dryers in every apartment residence. Energy-efficient hurricane resistant windows and sliding glass doors. Contemporary ceiling fans.

— USB Receptacle: 2 high-speed **USB Charging Ports** in the main bedroom and kitchen.

TheFlatsAtCityPlace.Com
📞 (305) 800-3528

3555 NW 83 Avenue, Suite 100; Doral, FL 33122
InfoFlats@relatedgroup.com



ORAL REPRESENTATIONS CANNOT BE RELIED UPON AS CORRECTLY STATING THE REPRESENTATIONS OF THE LESSOR. ALL SQUARE FOOTAGES QUOTED ARE APPROXIMATE AND ARE CONDITIONED SPACE, FLOORPLANS AND DEVELOPMENT PLANS ARE SUBJECT TO CHANGE.

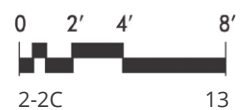
TWO BEDROOMS 2-2C

2 BATHROOMS ▪ 1,179 Square Feet



THEFLATS

LUXURY APARTMENTS



TWO BEDROOMS 2-2C

— **The Flats Residences** were inspired by international luxury with a thoughtful array of interior finishes. Informed and inspired by international luxury resort design, while perfectly complementing CityPlace in its sleek, urban lifestyle sensibility. The color palette of your apartment is based on the light as it touches surfaces with airy brightness, spotlighting chrome, wood and delicately-hued quartz

— **Artistic Kitchens:** Imported European cabinets. Premium hardware & drawer pulls coordinate this artistic design. **Caesarstone®** quartz counter tops. **Icon Glass®** kitchen back-splash is a mega-sized mosaic that shouts luxury—very upscale and modern, and very dramatic. Sleek **Whirlpool® Stainless Steel Energy Star** appliances. Dramatic under-cabinet lighting. Under mount, **Zero Radius Kitchen Sinks**. **Opella®** kitchen faucet with a curved coil-spring design

— **Provocative Spa-Inspired Bathrooms:** Imported European vanities with premium hardware & drawer pulls. Designer custom framed mirror. River White Granite countertops and backsplashes. Our **Kohler Spa Soaking Bathtubs** are sleek with an ergonomic design **Milano Bathroom Faucet** is an elegant addition to your bathroom with its unique lavatory faucet. Rain shower head. **Opella** china bathroom sink. **Moen®** adjustable curved shower rod in brushed nickel.

— **Radiant & Compelling Living Areas:** Lush, barefoot-friendly carpeting and imported, wood-styled tiles throughout the living spaces. **Tile Soundproofing Underlayment.** This means that under your tile we have placed soundproofing. We understand sound transfer and work to reduce transfer for your living experience.

— Private balconies. Time-saving, conveniently-located energy star washers and dryers in every apartment residence. Energy-efficient hurricane resistant windows and sliding glass doors. Contemporary ceiling fans.

— USB Receptacle: 2 high-speed **USB Charging Ports** in the main bedroom and kitchen.

TheFlatsAtCityPlace.Com
☎ (305) 800-3528

3555 NW 83 Avenue, Suite 100; Doral, FL 33122
InfoFlats@relatedgroup.com



ORAL REPRESENTATIONS CANNOT BE RELIED UPON AS CORRECTLY STATING THE REPRESENTATIONS OF THE LESSOR. ALL SQUARE FOOTAGES QUOTED ARE APPROXIMATE AND ARE CONDITIONED SPACE, FLOORPLANS AND DEVELOPMENT PLANS ARE SUBJECT TO CHANGE.

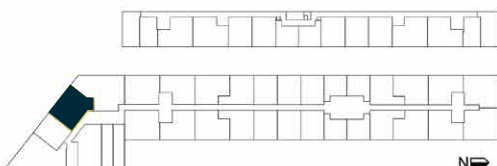
TWO BEDROOMS OVAL 2-2D

2 BATHROOMS ▪ 1,155 Square Feet



THEFLATS

LUXURY APARTMENTS



2-2D

3

TWO BEDROOMS OVAL 2-2D

— **The Flats Residences** were inspired by international luxury with a thoughtful array of interior finishes. Informed and inspired by international luxury resort design, while perfectly complementing CityPlace in its sleek, urban lifestyle sensibility. The color palette of your apartment is based on the light as it touches surfaces with airy brightness, spotlighting chrome, wood and delicately-hued quartz

— **Artistic Kitchens:** Imported European cabinets. Premium hardware & drawer pulls coordinate this artistic design. **Caesarstone®** quartz counter tops. **Icon Glass®** kitchen back-splash is a mega-sized mosaic that shouts luxury—very upscale and modern, and very dramatic. Sleek **Whirlpool® Stainless Steel Energy Star** appliances. Dramatic under-cabinet lighting. Under mount, **Zero Radius Kitchen Sinks**. **Opella®** kitchen faucet with a curved coil-spring design

— **Provocative Spa-Inspired Bathrooms:** Imported European vanities with premium hardware & drawer pulls. Designer custom framed mirror. River White Granite countertops and backsplashes. Our **Kohler Spa Soaking Bathtubs** are sleek with an ergonomic design **Milano Bathroom Faucet** is an elegant addition to your bathroom with its unique lavatory faucet. Rain shower head. **Opella** china bathroom sink. **Moen®** adjustable curved shower rod in brushed nickel.

— **Radiant & Compelling Living Areas:** Lush, barefoot-friendly carpeting and imported, wood-styled tiles throughout the living spaces. **Tile Soundproofing Underlayment.** This means that under your tile we have placed soundproofing. We understand sound transfer and work to reduce transfer for your living experience.

— Private balconies. Time-saving, conveniently-located energy star washers and dryers in every apartment residence. Energy-efficient hurricane resistant windows and sliding glass doors. Contemporary ceiling fans.

— USB Receptacle: 2 high-speed **USB Charging Ports** in the main bedroom and kitchen.

TheFlatsAtCityPlace.Com
📞 (305) 800-3528

3555 NW 83 Avenue, Suite 100; Doral, FL 33122
InfoFlats@relatedgroup.com



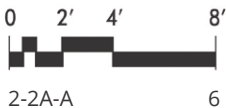
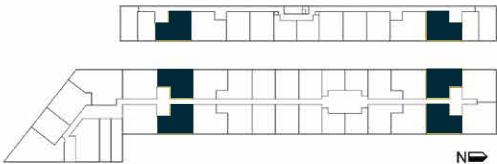
ORAL REPRESENTATIONS CANNOT BE RELIED UPON AS CORRECTLY STATING THE REPRESENTATIONS OF THE LESSOR. ALL SQUARE FOOTAGES QUOTED ARE APPROXIMATE AND ARE CONDITIONED SPACE, FLOORPLANS AND DEVELOPMENT PLANS ARE SUBJECT TO CHANGE.

TWO BEDROOMS, 2-2A-A

1 BATHROOM ▪ 1,029 Square Feet



LUXURY APARTMENTS



TWO BEDROOMS, 2-2A-A

— **The Flats Residences** were inspired by international luxury with a thoughtful array of interior finishes. Informed and inspired by international luxury resort design, while perfectly complementing CityPlace in its sleek, urban lifestyle sensibility. The color palette of your apartment is based on the light as it touches surfaces with airy brightness, spotlighting chrome, wood and delicately-hued quartz

— **Artistic Kitchens:** Imported European cabinets. Premium hardware & drawer pulls coordinate this artistic design. **Caesarstone®** quartz counter tops. **Icon Glass®** kitchen back-splash is a mega-sized mosaic that shouts luxury—very upscale and modern, and very dramatic. Sleek **Whirlpool® Stainless Steel Energy Star** appliances. Dramatic under-cabinet lighting. Under mount, **Zero Radius Kitchen Sinks**. **Opella®** kitchen faucet with a curved coil-spring design

— **Provocative Spa-Inspired Bathrooms:** Imported European vanities with premium hardware & drawer pulls. Designer custom framed mirror. River White Granite countertops and backsplashes. Our **Kohler Spa Soaking Bathtubs** are sleek with an ergonomic design **Milano Bathroom Faucet** is an elegant addition to your bathroom with its unique lavatory faucet. Rain shower head. **Opella** china bathroom sink. **Moen®** adjustable curved shower rod in brushed nickel.

— **Radiant & Compelling Living Areas:** Lush, barefoot-friendly carpeting and imported, wood-styled tiles throughout the living spaces. **Tile Soundproofing Underlayment.** This means that under your tile we have placed soundproofing. We understand sound transfer and work to reduce transfer for your living experience.

— Private balconies. Time-saving, conveniently-located energy star washers and dryers in every apartment residence. Energy-efficient hurricane resistant windows and sliding glass doors. Contemporary ceiling fans.

— USB Receptacle: 2 high-speed **USB Charging Ports** in the main bedroom and kitchen.

TheFlatsAtCityPlace.Com
📞 (305) 800-3528

3555 NW 83 Avenue, Suite 100; Doral, FL 33122
InfoFlats@relatedgroup.com



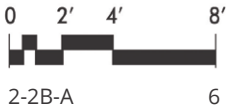
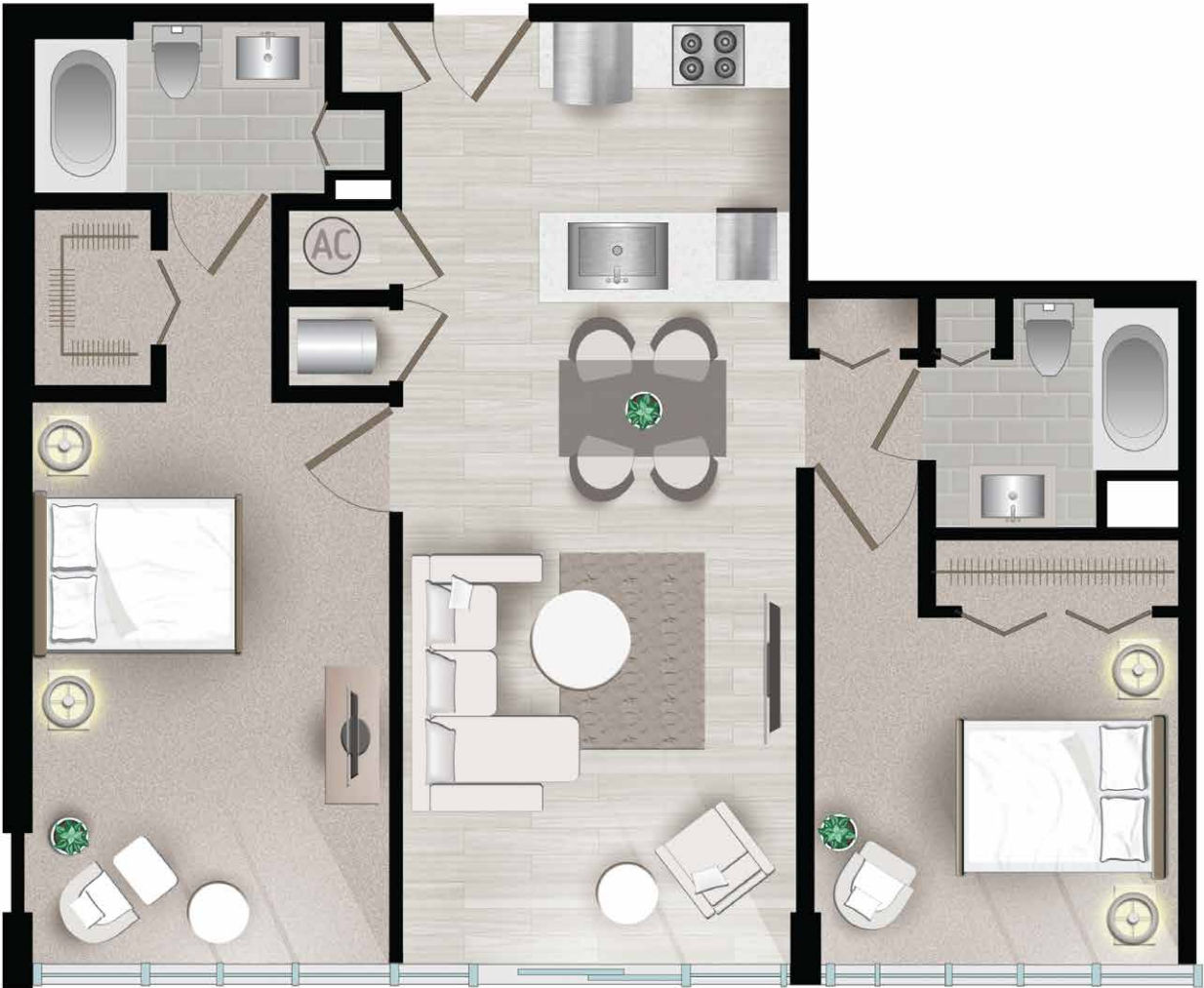
ORAL REPRESENTATIONS CANNOT BE RELIED UPON AS CORRECTLY STATING THE REPRESENTATIONS OF THE LESSOR. ALL SQUARE FOOTAGES QUOTED ARE APPROXIMATE AND ARE CONDITIONED SPACE, FLOORPLANS AND DEVELOPMENT PLANS ARE SUBJECT TO CHANGE.

TWO BEDROOMS, 2-2B-A

1 BATHROOM ▪ 1,049 Square Feet



LUXURY APARTMENTS



TWO BEDROOMS, 2-2B-A

— **The Flats Residences** were inspired by international luxury with a thoughtful array of interior finishes. Informed and inspired by international luxury resort design, while perfectly complementing CityPlace in its sleek, urban lifestyle sensibility. The color palette of your apartment is based on the light as it touches surfaces with airy brightness, spotlighting chrome, wood and delicately-hued quartz

— **Artistic Kitchens:** Imported European cabinets. Premium hardware & drawer pulls coordinate this artistic design. **Caesarstone®** quartz counter tops. **Icon Glass®** kitchen back-splash is a mega-sized mosaic that shouts luxury—very upscale and modern, and very dramatic. Sleek **Whirlpool® Stainless Steel Energy Star** appliances. Dramatic under-cabinet lighting. Under mount, **Zero Radius Kitchen Sinks**. **Opella®** kitchen faucet with a curved coil-spring design

— **Provocative Spa-Inspired Bathrooms:** Imported European vanities with premium hardware & drawer pulls. Designer custom framed mirror. River White Granite countertops and backsplashes. Our **Kohler Spa Soaking Bathtubs** are sleek with an ergonomic design **Milano Bathroom Faucet** is an elegant addition to your bathroom with its unique lavatory faucet. Rain shower head. **Opella** china bathroom sink. **Moen®** adjustable curved shower rod in brushed nickel.

— **Radiant & Compelling Living Areas:** Lush, barefoot-friendly carpeting and imported, wood-styled tiles throughout the living spaces. **Tile Soundproofing Underlayment.** This means that under your tile we have placed soundproofing. We understand sound transfer and work to reduce transfer for your living experience.

— Private balconies. Time-saving, conveniently-located energy star washers and dryers in every apartment residence. Energy-efficient hurricane resistant windows and sliding glass doors. Contemporary ceiling fans.

— USB Receptacle: 2 high-speed **USB Charging Ports** in the main bedroom and kitchen.

TheFlatsAtCityPlace.Com
📞 (305) 800-3528

3555 NW 83 Avenue, Suite 100; Doral, FL 33122
InfoFlats@relatedgroup.com



ORAL REPRESENTATIONS CANNOT BE RELIED UPON AS CORRECTLY STATING THE REPRESENTATIONS OF THE LESSOR. ALL SQUARE FOOTAGES QUOTED ARE APPROXIMATE AND ARE CONDITIONED SPACE, FLOORPLANS AND DEVELOPMENT PLANS ARE SUBJECT TO CHANGE.

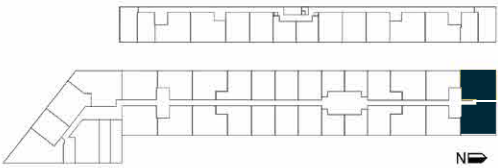
TWO BEDROOMS, 2-2C-A

1 BATHROOM • 1,241 Square Feet



THEFLATS

LUXURY APARTMENTS



2-2C_A

TWO BEDROOMS, 2-2C_A

— **The Flats Residences** were inspired by international luxury with a thoughtful array of interior finishes. Informed and inspired by international luxury resort design, while perfectly complementing CityPlace in its sleek, urban lifestyle sensibility. The color palette of your apartment is based on the light as it touches surfaces with airy brightness, spotlighting chrome, wood and delicately-hued quartz

— **Artistic Kitchens:** Imported European cabinets. Premium hardware & drawer pulls coordinate this artistic design. **Caesarstone®** quartz counter tops. **Icon Glass®** kitchen back-splash is a mega-sized mosaic that shouts luxury—very upscale and modern, and very dramatic. Sleek **Whirlpool® Stainless Steel Energy Star** appliances. Dramatic under-cabinet lighting. Under mount, **Zero Radius Kitchen Sinks**. **Opella®** kitchen faucet with a curved coil-spring design

— **Provocative Spa-Inspired Bathrooms:** Imported European vanities with premium hardware & drawer pulls. Designer custom framed mirror. River White Granite countertops and backsplashes. Our **Kohler Spa Soaking Bathtubs** are sleek with an ergonomic design **Milano Bathroom Faucet** is an elegant addition to your bathroom with its unique lavatory faucet. Rain shower head. **Opella** china bathroom sink. **Moen®** adjustable curved shower rod in brushed nickel.

— **Radiant & Compelling Living Areas:** Lush, barefoot-friendly carpeting and imported, wood-styled tiles throughout the living spaces. **Tile Soundproofing Underlayment.** This means that under your tile we have placed soundproofing. We understand sound transfer and work to reduce transfer for your living experience.

— Private balconies. Time-saving, conveniently-located energy star washers and dryers in every apartment residence. Energy-efficient hurricane resistant windows and sliding glass doors. Contemporary ceiling fans.

— USB Receptacle: 2 high-speed **USB Charging Ports** in the main bedroom and kitchen.

TheFlatsAtCityPlace.Com
📞 (305) 800-3528

3555 NW 83 Avenue, Suite 100; Doral, FL 33122
InfoFlats@relatedgroup.com



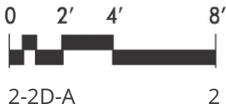
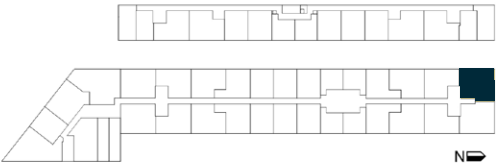
ORAL REPRESENTATIONS CANNOT BE RELIED UPON AS CORRECTLY STATING THE REPRESENTATIONS OF THE LESSOR. ALL SQUARE FOOTAGES QUOTED ARE APPROXIMATE AND ARE CONDITIONED SPACE, FLOORPLANS AND DEVELOPMENT PLANS ARE SUBJECT TO CHANGE.

TWO BEDROOMS, 2-2D-A

1 BATHROOM ▪ 1,175 Square Feet



LUXURY APARTMENTS



TWO BEDROOMS, 2-2D-A

— **The Flats Residences** were inspired by international luxury with a thoughtful array of interior finishes. Informed and inspired by international luxury resort design, while perfectly complementing CityPlace in its sleek, urban lifestyle sensibility. The color palette of your apartment is based on the light as it touches surfaces with airy brightness, spotlighting chrome, wood and delicately-hued quartz

— **Artistic Kitchens:** Imported European cabinets. Premium hardware & drawer pulls coordinate this artistic design. **Caesarstone®** quartz counter tops. **Icon Glass®** kitchen back-splash is a mega-sized mosaic that shouts luxury—very upscale and modern, and very dramatic. Sleek **Whirlpool® Stainless Steel Energy Star** appliances. Dramatic under-cabinet lighting. Under mount, **Zero Radius Kitchen Sinks**. **Opella®** kitchen faucet with a curved coil-spring design

— **Provocative Spa-Inspired Bathrooms:** Imported European vanities with premium hardware & drawer pulls. Designer custom framed mirror. River White Granite countertops and backsplashes. Our **Kohler Spa Soaking Bathtubs** are sleek with an ergonomic design **Milano Bathroom Faucet** is an elegant addition to your bathroom with its unique lavatory faucet. Rain shower head. **Opella** china bathroom sink. **Moen®** adjustable curved shower rod in brushed nickel.

— **Radiant & Compelling Living Areas:** Lush, barefoot-friendly carpeting and imported, wood-styled tiles throughout the living spaces. **Tile Soundproofing Underlayment.** This means that under your tile we have placed soundproofing. We understand sound transfer and work to reduce transfer for your living experience.

— Private balconies. Time-saving, conveniently-located energy star washers and dryers in every apartment residence. Energy-efficient hurricane resistant windows and sliding glass doors. Contemporary ceiling fans.

— USB Receptacle: 2 high-speed **USB Charging Ports** in the main bedroom and kitchen.

TheFlatsAtCityPlace.Com
📞 (305) 800-3528

3555 NW 83 Avenue, Suite 100; Doral, FL 33122
InfoFlats@relatedgroup.com



ORAL REPRESENTATIONS CANNOT BE RELIED UPON AS CORRECTLY STATING THE REPRESENTATIONS OF THE LESSOR. ALL SQUARE FOOTAGES QUOTED ARE APPROXIMATE AND ARE CONDITIONED SPACE, FLOORPLANS AND DEVELOPMENT PLANS ARE SUBJECT TO CHANGE.

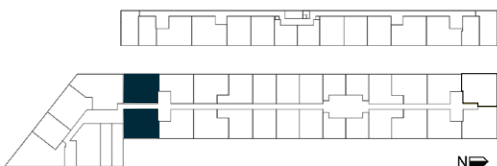
TWO BEDROOMS, DEN 2-2D

2 BATHROOMS ▪ 1,118 Square Feet



THEFLATS

LUXURY APARTMENTS



2-2D

11

TWO BEDROOMS, DEN 2-2D

— **The Flats Residences** were inspired by international luxury with a thoughtful array of interior finishes. Informed and inspired by international luxury resort design, while perfectly complementing CityPlace in its sleek, urban lifestyle sensibility. The color palette of your apartment is based on the light as it touches surfaces with airy brightness, spotlighting chrome, wood and delicately-hued quartz

— **Artistic Kitchens:** Imported European cabinets. Premium hardware & drawer pulls coordinate this artistic design. **Caesarstone®** quartz counter tops. **Icon Glass®** kitchen back-splash is a mega-sized mosaic that shouts luxury—very upscale and modern, and very dramatic. Sleek **Whirlpool® Stainless Steel Energy Star** appliances. Dramatic under-cabinet lighting. Under mount, **Zero Radius Kitchen Sinks**. **Opella®** kitchen faucet with a curved coil-spring design

— **Provocative Spa-Inspired Bathrooms:** Imported European vanities with premium hardware & drawer pulls. Designer custom framed mirror. River White Granite countertops and backsplashes. Our **Kohler Spa Soaking Bathtubs** are sleek with an ergonomic design **Milano Bathroom Faucet** is an elegant addition to your bathroom with its unique lavatory faucet. Rain shower head. **Opella** china bathroom sink. **Moen®** adjustable curved shower rod in brushed nickel.

— **Radiant & Compelling Living Areas:** Lush, barefoot-friendly carpeting and imported, wood-styled tiles throughout the living spaces. **Tile Soundproofing Underlayment.** This means that under your tile we have placed soundproofing. We understand sound transfer and work to reduce transfer for your living experience.

— Private balconies. Time-saving, conveniently-located energy star washers and dryers in every apartment residence. Energy-efficient hurricane resistant windows and sliding glass doors. Contemporary ceiling fans.

— USB Receptacle: 2 high-speed **USB Charging Ports** in the main bedroom and kitchen.

TheFlatsAtCityPlace.Com
📞 (305) 800-3528

3555 NW 83 Avenue, Suite 100; Doral, FL 33122
InfoFlats@relatedgroup.com



ORAL REPRESENTATIONS CANNOT BE RELIED UPON AS CORRECTLY STATING THE REPRESENTATIONS OF THE LESSOR. ALL SQUARE FOOTAGES QUOTED ARE APPROXIMATE AND ARE CONDITIONED SPACE, FLOORPLANS AND DEVELOPMENT PLANS ARE SUBJECT TO CHANGE.

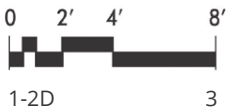
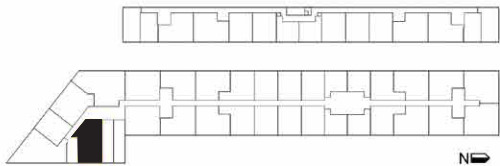
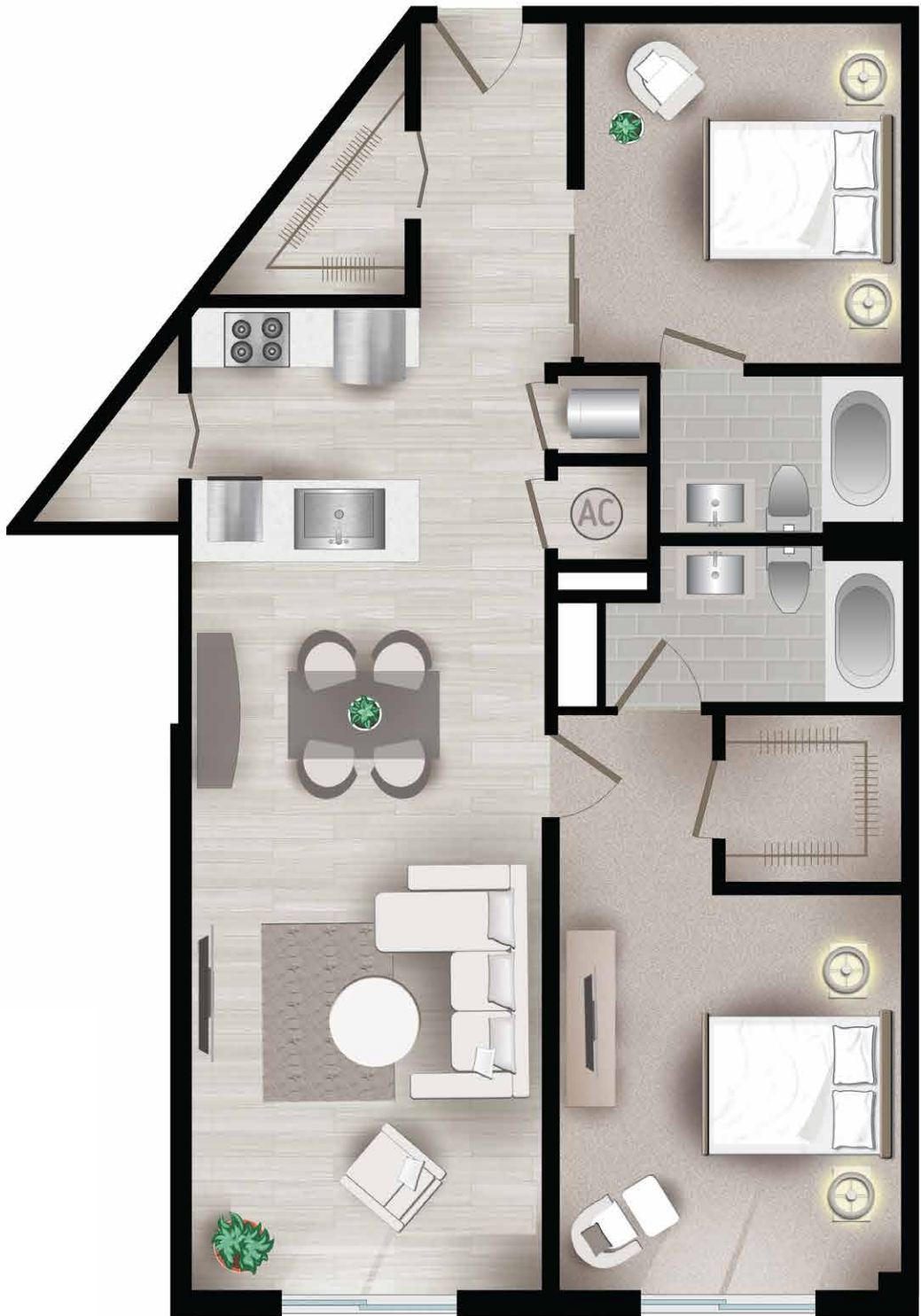
TWO BEDROOMS, OVAL, 1-2D

2 BATHROOMS • 1,169 Square Feet



THEFLATS

LUXURY APARTMENTS



TWO BEDROOMS, OVAL, 1-2D

— **The Flats Residences** were inspired by international luxury with a thoughtful array of interior finishes. Informed and inspired by international luxury resort design, while perfectly complementing CityPlace in its sleek, urban lifestyle sensibility. The color palette of your apartment is based on the light as it touches surfaces with airy brightness, spotlighting chrome, wood and delicately-hued quartz

— **Artistic Kitchens:** Imported European cabinets. Premium hardware & drawer pulls coordinate this artistic design. **Caesarstone®** quartz counter tops. **Icon Glass®** kitchen back-splash is a mega-sized mosaic that shouts luxury—very upscale and modern, and very dramatic. Sleek **Whirlpool® Stainless Steel Energy Star** appliances. Dramatic under-cabinet lighting. Under mount, **Zero Radius Kitchen Sinks**. **Opella®** kitchen faucet with a curved coil-spring design

— **Provocative Spa-Inspired Bathrooms:** Imported European vanities with premium hardware & drawer pulls. Designer custom framed mirror. River White Granite countertops and backsplashes. Our **Kohler Spa Soaking Bathtubs** are sleek with an ergonomic design **Milano Bathroom Faucet** is an elegant addition to your bathroom with its unique lavatory faucet. Rain shower head. **Opella** china bathroom sink. **Moen®** adjustable curved shower rod in brushed nickel.

— **Radiant & Compelling Living Areas:** Lush, barefoot-friendly carpeting and imported, wood-styled tiles throughout the living spaces. **Tile Soundproofing Underlayment.** This means that under your tile we have placed soundproofing. We understand sound transfer and work to reduce transfer for your living experience.

— Private balconies. Time-saving, conveniently-located energy star washers and dryers in every apartment residence. Energy-efficient hurricane resistant windows and sliding glass doors. Contemporary ceiling fans.

— USB Receptacle: 2 high-speed **USB Charging Ports** in the main bedroom and kitchen.

TheFlatsAtCityPlace.Com
📞 (305) 800-3528

3555 NW 83 Avenue, Suite 100; Doral, FL 33122
InfoFlats@relatedgroup.com



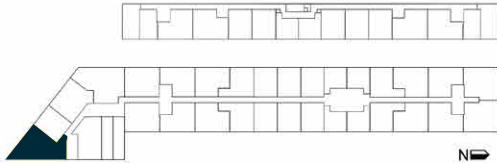
ORAL REPRESENTATIONS CANNOT BE RELIED UPON AS CORRECTLY STATING THE REPRESENTATIONS OF THE LESSOR. ALL SQUARE FOOTAGES QUOTED ARE APPROXIMATE AND ARE CONDITIONED SPACE, FLOORPLANS AND DEVELOPMENT PLANS ARE SUBJECT TO CHANGE.

THREE BEDROOMS 3-2 OVAL

2 BATHROOMS ▪ 1,430 Square Feet



LUXURY APARTMENTS



THREE BEDROOMS 3-2 OVAL

- **The Flats Residences** were inspired by international luxury with a thoughtful array of interior finishes. Informed and inspired by international luxury resort design, while perfectly complementing CityPlace in its sleek, urban lifestyle sensibility.
- The color palette of your apartment is based on the light as it touches surfaces with airy brightness, spotlighting chrome, wood and delicately-hued quartz
- **Artistic Kitchens:** Imported European cabinets. Premium hardware & drawer pulls coordinate this artistic design.
- **Caesarstone®** quartz counter tops.
- **Icon Glass®** kitchen back-splash is a mega-sized mosaic that shouts luxury—very upscale and modern, and very dramatic.
- Sleek **Whirlpool® Stainless Steel Energy Star** appliances.
- Dramatic under-cabinet lighting.
- Under mount, **Zero Radius Kitchen Sinks.**
- **Opella®** kitchen faucet with a curved coil-spring design
- **Provocative Spa-Inspired Bathrooms:** Imported European vanities with premium hardware & drawer pulls.
- Designer custom framed mirror.
- River White Granite countertops and backsplashes.

- Our **Kohler Spa Soaking Bathtubs** are sleek with an ergonomic design
- **Milano Bathroom Faucet** is an elegant addition to your bathroom with its unique lavatory faucet.
- Rain shower head.
- **Opella** china bathroom sink.
- **Moen®** adjustable curved shower rod in brushed nickel.
- **Radiant & Compelling Living Areas:** Lush, barefoot-friendly carpeting and imported, wood-styled tiles throughout the living spaces.
- **Tile Soundproofing Underlayment.** This means that under your tile we have placed soundproofing. We understand sound transfer and work to reduce transfer for your living experience.
- Private balconies.
- Time-saving, conveniently-located energy star washers and dryers in every apartment residence.
- Energy-efficient hurricane resistant windows and sliding glass doors.
- Contemporary ceiling fans.
- USB Receptacle: 2 high-speed **USB Charging Ports** in the main bedroom and kitchen.



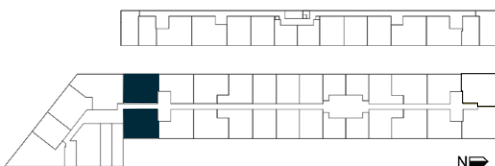
THREE BEDROOMS, 2-2D

2 BATHROOMS ▪ 1,118 Square Feet



THEFLATS

LUXURY APARTMENTS



2-2D

11

THREE BEDROOMS, 2-2D

— **The Flats Residences** were inspired by international luxury with a thoughtful array of interior finishes. Informed and inspired by international luxury resort design, while perfectly complementing CityPlace in its sleek, urban lifestyle sensibility. The color palette of your apartment is based on the light as it touches surfaces with airy brightness, spotlighting chrome, wood and delicately-hued quartz

— **Artistic Kitchens:** Imported European cabinets. Premium hardware & drawer pulls coordinate this artistic design. **Caesarstone®** quartz counter tops. **Icon Glass®** kitchen back-splash is a mega-sized mosaic that shouts luxury—very upscale and modern, and very dramatic. Sleek **Whirlpool® Stainless Steel Energy Star** appliances. Dramatic under-cabinet lighting. Under mount, **Zero Radius Kitchen Sinks**. **Opella®** kitchen faucet with a curved coil-spring design

— **Provocative Spa-Inspired Bathrooms:** Imported European vanities with premium hardware & drawer pulls. Designer custom framed mirror. River White Granite countertops and backsplashes. Our **Kohler Spa Soaking Bathtubs** are sleek with an ergonomic design **Milano Bathroom Faucet** is an elegant addition to your bathroom with its unique lavatory faucet. Rain shower head. **Opella** china bathroom sink. **Moen®** adjustable curved shower rod in brushed nickel.

— **Radiant & Compelling Living Areas:** Lush, barefoot-friendly carpeting and imported, wood-styled tiles throughout the living spaces. **Tile Soundproofing Underlayment.** This means that under your tile we have placed soundproofing. We understand sound transfer and work to reduce transfer for your living experience.

— Private balconies. Time-saving, conveniently-located energy star washers and dryers in every apartment residence. Energy-efficient hurricane resistant windows and sliding glass doors. Contemporary ceiling fans.

— USB Receptacle: 2 high-speed **USB Charging Ports** in the main bedroom and kitchen.

TheFlatsAtCityPlace.Com
📞 (305) 800-3528

3555 NW 83 Avenue, Suite 100; Doral, FL 33122
InfoFlats@relatedgroup.com



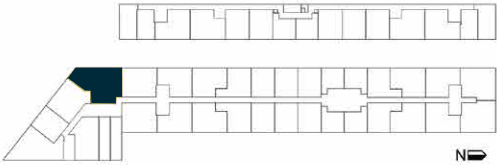
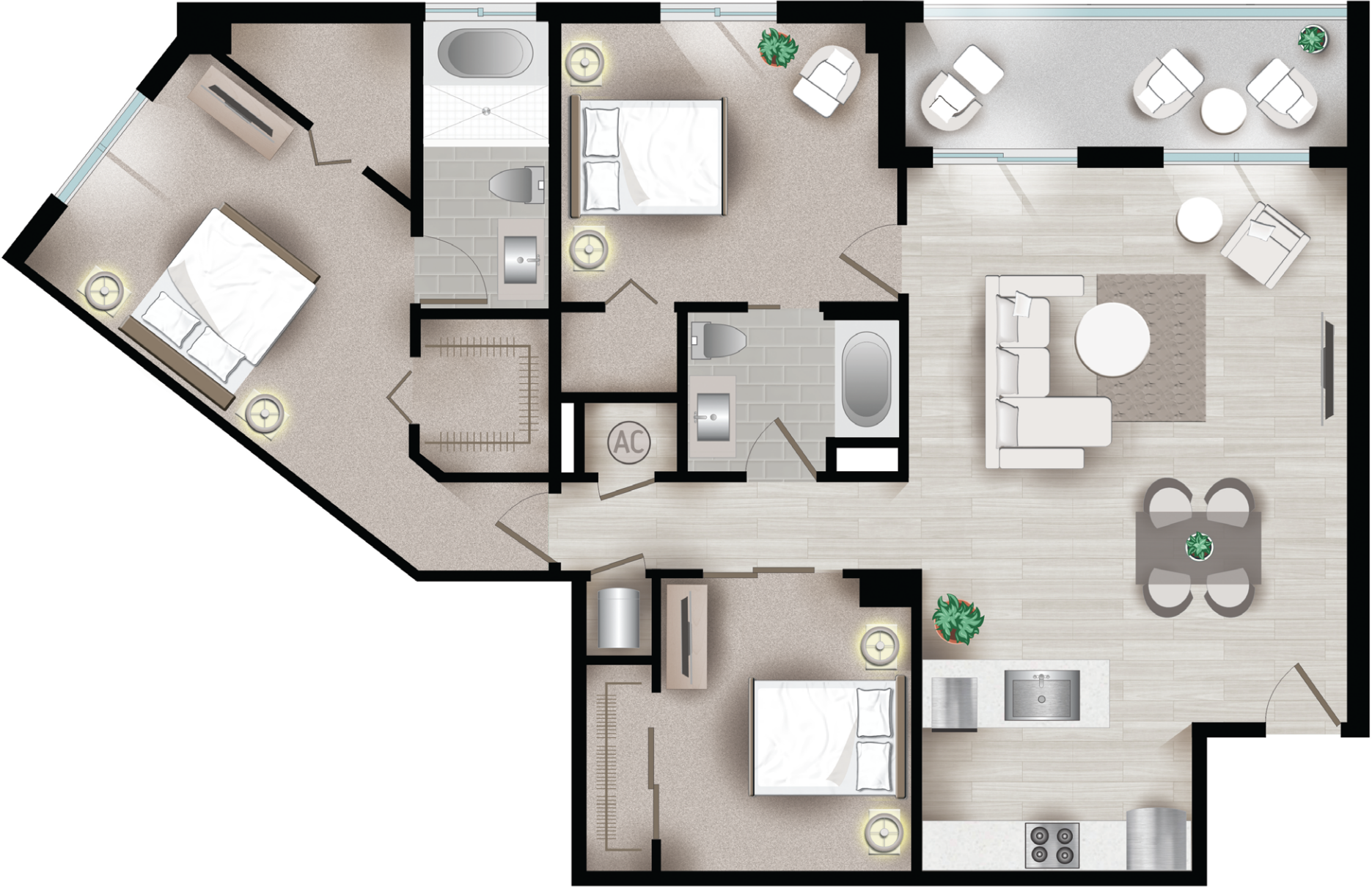
ORAL REPRESENTATIONS CANNOT BE RELIED UPON AS CORRECTLY STATING THE REPRESENTATIONS OF THE LESSOR. ALL SQUARE FOOTAGES QUOTED ARE APPROXIMATE AND ARE CONDITIONED SPACE, FLOORPLANS AND DEVELOPMENT PLANS ARE SUBJECT TO CHANGE.

THREE BEDROOMS, OVAL A2-2D

2 BATHROOMS ▪ 1,518 Square Feet



LUXURY APARTMENTS



THREE BEDROOMS, OVAL A2-2D

- **The Flats Residences** were inspired by international luxury with a thoughtful array of interior finishes. Informed and inspired by international luxury resort design, while perfectly complementing CityPlace in its sleek, urban lifestyle sensibility.
- The color palette of your apartment is based on the light as it touches surfaces with airy brightness, spotlighting chrome, wood and delicately-hued quartz
- **Artistic Kitchens:** Imported European cabinets. Premium hardware & drawer pulls coordinate this artistic design.
- **Caesarstone®** quartz counter tops.
- **Icon Glass®** kitchen back-splash is a mega-sized mosaic that shouts luxury—very upscale and modern, and very dramatic.
- Sleek **Whirlpool® Stainless Steel Energy Star** appliances.
- Dramatic under-cabinet lighting.
- Under mount, **Zero Radius Kitchen Sinks.**
- **Opella®** kitchen faucet with a curved coil-spring design
- **Provocative Spa-Inspired Bathrooms:** Imported European vanities with premium hardware & drawer pulls.
- Designer custom framed mirror.
- River White Granite countertops and backsplashes.

- Our **Kohler Spa Soaking Bathtubs** are sleek with an ergonomic design
- **Milano Bathroom Faucet** is an elegant addition to your bathroom with its unique lavatory faucet.
- Rain shower head.
- **Opella** china bathroom sink.
- **Moen®** adjustable curved shower rod in brushed nickel.
- **Radiant & Compelling Living Areas:** Lush, barefoot-friendly carpeting and imported, wood-styled tiles throughout the living spaces.
- **Tile Soundproofing Underlayment.** This means that under your tile we have placed soundproofing. We understand sound transfer and work to reduce transfer for your living experience.
- Private balconies.
- Time-saving, conveniently-located energy star washers and dryers in every apartment residence.
- Energy-efficient hurricane resistant windows and sliding glass doors.
- Contemporary ceiling fans.
- USB Receptacle: 2 high-speed **USB Charging Ports** in the main bedroom and kitchen.

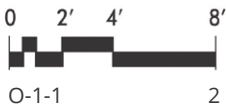
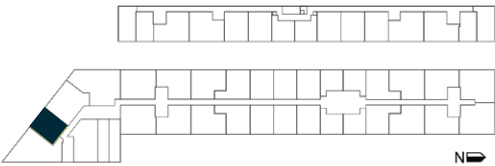


ONE BEDROOM 1-1 OVAL

1 BATHROOM ▪ 758 Square Feet



LUXURY APARTMENTS



ONE BEDROOM 1-1 OVAL

— **The Flats Residences** were inspired by international luxury with a thoughtful array of interior finishes. Informed and inspired by international luxury resort design, while perfectly complementing CityPlace in its sleek, urban lifestyle sensibility. The color palette of your apartment is based on the light as it touches surfaces with airy brightness, spotlighting chrome, wood and delicately-hued quartz

— **Artistic Kitchens:** Imported European cabinets. Premium hardware & drawer pulls coordinate this artistic design. **Caesarstone®** quartz counter tops. **Icon Glass®** kitchen back-splash is a mega-sized mosaic that shouts luxury—very upscale and modern, and very dramatic. Sleek **Whirlpool® Stainless Steel Energy Star** appliances. Dramatic under-cabinet lighting. Under mount, **Zero Radius Kitchen Sinks**. **Opella®** kitchen faucet with a curved coil-spring design

— **Provocative Spa-Inspired Bathrooms:** Imported European vanities with premium hardware & drawer pulls. Designer custom framed mirror. River White Granite countertops and backsplashes. Our **Kohler Spa Soaking Bathtubs** are sleek with an ergonomic design **Milano Bathroom Faucet** is an elegant addition to your bathroom with its unique lavatory faucet. Rain shower head. **Opella** china bathroom sink. **Moen®** adjustable curved shower rod in brushed nickel.

— **Radiant & Compelling Living Areas:** Lush, barefoot-friendly carpeting and imported, wood-styled tiles throughout the living spaces. **Tile Soundproofing Underlayment.** This means that under your tile we have placed soundproofing. We understand sound transfer and work to reduce transfer for your living experience.

— Private balconies. Time-saving, conveniently-located energy star washers and dryers in every apartment residence. Energy-efficient hurricane resistant windows and sliding glass doors. Contemporary ceiling fans.

— USB Receptacle: 2 high-speed **USB Charging Ports** in the main bedroom and kitchen.

TheFlatsAtCityPlace.Com
📞 (305) 800-3528

3555 NW 83 Avenue, Suite 100; Doral, FL 33122
InfoFlats@relatedgroup.com



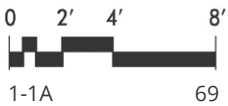
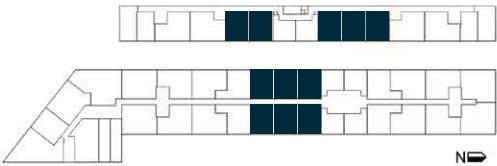
ORAL REPRESENTATIONS CANNOT BE RELIED UPON AS CORRECTLY STATING THE REPRESENTATIONS OF THE LESSOR. ALL SQUARE FOOTAGES QUOTED ARE APPROXIMATE AND ARE CONDITIONED SPACE, FLOORPLANS AND DEVELOPMENT PLANS ARE SUBJECT TO CHANGE.

ONE BEDROOM 1-1A

1 BATHROOM ▪ 721 Square Feet



LUXURY APARTMENTS



ONE BEDROOM 1-1A

— **The Flats Residences** were inspired by international luxury with a thoughtful array of interior finishes. Informed and inspired by international luxury resort design, while perfectly complementing CityPlace in its sleek, urban lifestyle sensibility. The color palette of your apartment is based on the light as it touches surfaces with airy brightness, spotlighting chrome, wood and delicately-hued quartz

— **Artistic Kitchens:** Imported European cabinets. Premium hardware & drawer pulls coordinate this artistic design. **Caesarstone®** quartz counter tops. **Icon Glass®** kitchen back-splash is a mega-sized mosaic that shouts luxury—very upscale and modern, and very dramatic. Sleek **Whirlpool® Stainless Steel Energy Star** appliances. Dramatic under-cabinet lighting. Under mount, **Zero Radius Kitchen Sinks**. **Opella®** kitchen faucet with a curved coil-spring design

— **Provocative Spa-Inspired Bathrooms:** Imported European vanities with premium hardware & drawer pulls. Designer custom framed mirror. River White Granite countertops and backsplashes. Our **Kohler Spa Soaking Bathtubs** are sleek with an ergonomic design **Milano Bathroom Faucet** is an elegant addition to your bathroom with its unique lavatory faucet. Rain shower head. **Opella** china bathroom sink. **Moen®** adjustable curved shower rod in brushed nickel.

— **Radiant & Compelling Living Areas:** Lush, barefoot-friendly carpeting and imported, wood-styled tiles throughout the living spaces. **Tile Soundproofing Underlayment.** This means that under your tile we have placed soundproofing. We understand sound transfer and work to reduce transfer for your living experience.

— Private balconies. Time-saving, conveniently-located energy star washers and dryers in every apartment residence. Energy-efficient hurricane resistant windows and sliding glass doors. Contemporary ceiling fans.

— USB Receptacle: 2 high-speed **USB Charging Ports** in the main bedroom and kitchen.

TheFlatsAtCityPlace.Com
📞 (305) 800-3528

3555 NW 83 Avenue, Suite 100; Doral, FL 33122
InfoFlats@relatedgroup.com



ORAL REPRESENTATIONS CANNOT BE RELIED UPON AS CORRECTLY STATING THE REPRESENTATIONS OF THE LESSOR. ALL SQUARE FOOTAGES QUOTED ARE APPROXIMATE AND ARE CONDITIONED SPACE, FLOORPLANS AND DEVELOPMENT PLANS ARE SUBJECT TO CHANGE.



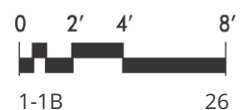
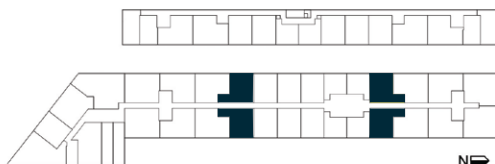
ONE BEDROOM 1-1B

1 BATHROOM • 843 Square Feet



THEFLATS

LUXURY APARTMENTS



ONE BEDROOM 1-1B

— **The Flats Residences** were inspired by international luxury with a thoughtful array of interior finishes. Informed and inspired by international luxury resort design, while perfectly complementing CityPlace in its sleek, urban lifestyle sensibility. The color palette of your apartment is based on the light as it touches surfaces with airy brightness, spotlighting chrome, wood and delicately-hued quartz

— **Artistic Kitchens:** Imported European cabinets. Premium hardware & drawer pulls coordinate this artistic design. **Caesarstone®** quartz counter tops. **Icon Glass®** kitchen back-splash is a mega-sized mosaic that shouts luxury—very upscale and modern, and very dramatic. Sleek **Whirlpool® Stainless Steel Energy Star** appliances. Dramatic under-cabinet lighting. Under mount, **Zero Radius Kitchen Sinks**. **Opella®** kitchen faucet with a curved coil-spring design

— **Provocative Spa-Inspired Bathrooms:** Imported European vanities with premium hardware & drawer pulls. Designer custom framed mirror. River White Granite countertops and backsplashes. Our **Kohler Spa Soaking Bathtubs** are sleek with an ergonomic design **Milano Bathroom Faucet** is an elegant addition to your bathroom with its unique lavatory faucet. Rain shower head. **Opella** china bathroom sink. **Moen®** adjustable curved shower rod in brushed nickel.

— **Radiant & Compelling Living Areas:** Lush, barefoot-friendly carpeting and imported, wood-styled tiles throughout the living spaces. **Tile Soundproofing Underlayment.** This means that under your tile we have placed soundproofing. We understand sound transfer and work to reduce transfer for your living experience.

— Private balconies. Time-saving, conveniently-located energy star washers and dryers in every apartment residence. Energy-efficient hurricane resistant windows and sliding glass doors. Contemporary ceiling fans.

— USB Receptacle: 2 high-speed **USB Charging Ports** in the main bedroom and kitchen.

TheFlatsAtCityPlace.Com
☎ (305) 800-3528

3555 NW 83 Avenue, Suite 100; Doral, FL 33122
InfoFlats@relatedgroup.com



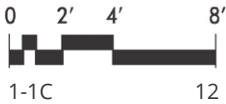
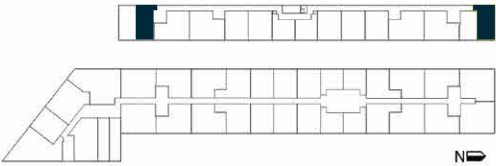
ORAL REPRESENTATIONS CANNOT BE RELIED UPON AS CORRECTLY STATING THE REPRESENTATIONS OF THE LESSOR. ALL SQUARE FOOTAGES QUOTED ARE APPROXIMATE AND ARE CONDITIONED SPACE, FLOORPLANS AND DEVELOPMENT PLANS ARE SUBJECT TO CHANGE.

ONE BEDROOM 1-1C

1 BATHROOM ▪ 658 Square Feet



LUXURY APARTMENTS



ONE BEDROOM 1-1C

— **The Flats Residences** were inspired by international luxury with a thoughtful array of interior finishes. Informed and inspired by international luxury resort design, while perfectly complementing CityPlace in its sleek, urban lifestyle sensibility. The color palette of your apartment is based on the light as it touches surfaces with airy brightness, spotlighting chrome, wood and delicately-hued quartz

— **Artistic Kitchens:** Imported European cabinets. Premium hardware & drawer pulls coordinate this artistic design. **Caesarstone®** quartz counter tops. **Icon Glass®** kitchen back-splash is a mega-sized mosaic that shouts luxury—very upscale and modern, and very dramatic. Sleek **Whirlpool® Stainless Steel Energy Star** appliances. Dramatic under-cabinet lighting. Under mount, **Zero Radius Kitchen Sinks**. **Opella®** kitchen faucet with a curved coil-spring design

— **Provocative Spa-Inspired Bathrooms:** Imported European vanities with premium hardware & drawer pulls. Designer custom framed mirror. River White Granite countertops and backsplashes. Our **Kohler Spa Soaking Bathtubs** are sleek with an ergonomic design **Milano Bathroom Faucet** is an elegant addition to your bathroom with its unique lavatory faucet. Rain shower head. **Opella** china bathroom sink. **Moen®** adjustable curved shower rod in brushed nickel.

— **Radiant & Compelling Living Areas:** Lush, barefoot-friendly carpeting and imported, wood-styled tiles throughout the living spaces. **Tile Soundproofing Underlayment.** This means that under your tile we have placed soundproofing. We understand sound transfer and work to reduce transfer for your living experience.

— Private balconies. Time-saving, conveniently-located energy star washers and dryers in every apartment residence. Energy-efficient hurricane resistant windows and sliding glass doors. Contemporary ceiling fans.

— USB Receptacle: 2 high-speed **USB Charging Ports** in the main bedroom and kitchen.

TheFlatsAtCityPlace.Com
📞 (305) 800-3528

3555 NW 83 Avenue, Suite 100; Doral, FL 33122
InfoFlats@relatedgroup.com



ORAL REPRESENTATIONS CANNOT BE RELIED UPON AS CORRECTLY STATING THE REPRESENTATIONS OF THE LESSOR. ALL SQUARE FOOTAGES QUOTED ARE APPROXIMATE AND ARE CONDITIONED SPACE, FLOORPLANS AND DEVELOPMENT PLANS ARE SUBJECT TO CHANGE.

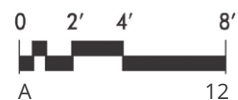
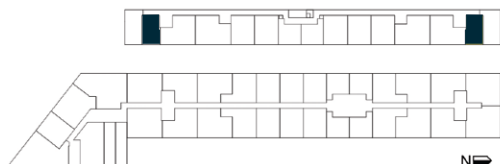
STUDIO A

1 BATHROOM ▪ 550 Square Feet



THEFLATS

LUXURY APARTMENTS



STUDIO A

— **The Flats Residences** were inspired by international luxury with a thoughtful array of interior finishes. Informed and inspired by international luxury resort design, while perfectly complementing CityPlace in its sleek, urban lifestyle sensibility. The color palette of your apartment is based on the light as it touches surfaces with airy brightness, spotlighting chrome, wood and delicately-hued quartz

— **Artistic Kitchens:** Imported European cabinets. Premium hardware & drawer pulls coordinate this artistic design. **Caesarstone®** quartz counter tops. **Icon Glass®** kitchen back-splash is a mega-sized mosaic that shouts luxury—very upscale and modern, and very dramatic. Sleek **Whirlpool® Stainless Steel Energy Star** appliances. Dramatic under-cabinet lighting. Under mount, **Zero Radius Kitchen Sinks**. **Opella®** kitchen faucet with a curved coil-spring design

— **Provocative Spa-Inspired Bathrooms:** Imported European vanities with premium hardware & drawer pulls. Designer custom framed mirror. River White Granite countertops and backsplashes. Our **Kohler Spa Soaking Bathtubs** are sleek with an ergonomic design. **Milano Bathroom Faucet** is an elegant addition to your bathroom with its unique lavatory faucet. Rain shower head. **Opella** china bathroom sink. **Moen®** adjustable curved shower rod in brushed nickel.

— **Radiant & Compelling Living Areas:** Lush, barefoot-friendly carpeting and imported, wood-styled tiles throughout the living spaces. **Tile Soundproofing Underlayment.** This means that under your tile we have placed soundproofing. We understand sound transfer and work to reduce transfer for your living experience.

— Private balconies. Time-saving, conveniently-located energy star washers and dryers in every apartment residence. Energy-efficient hurricane resistant windows and sliding glass doors. Contemporary ceiling fans.

— USB Receptacle: 2 high-speed **USB Charging Ports** in the main bedroom and kitchen.

TheFlatsAtCityPlace.Com
📞 (305) 800-3528

3555 NW 83 Avenue, Suite 100; Doral, FL 33122
InfoFlats@relatedgroup.com



ORAL REPRESENTATIONS CANNOT BE RELIED UPON AS CORRECTLY STATING THE REPRESENTATIONS OF THE LESSOR. ALL SQUARE FOOTAGES QUOTED ARE APPROXIMATE AND ARE CONDITIONED SPACE, FLOORPLANS AND DEVELOPMENT PLANS ARE SUBJECT TO CHANGE.

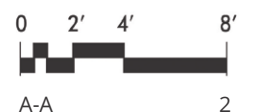
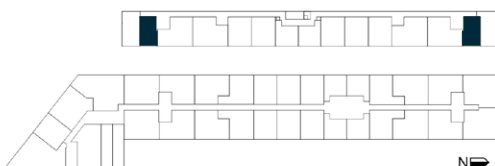
STUDIO A-A

1 BATHROOM ▪ 592 Square Feet



THEFLATS

LUXURY APARTMENTS



STUDIO A-A

— **The Flats Residences** were inspired by international luxury with a thoughtful array of interior finishes. Informed and inspired by international luxury resort design, while perfectly complementing CityPlace in its sleek, urban lifestyle sensibility. The color palette of your apartment is based on the light as it touches surfaces with airy brightness, spotlighting chrome, wood and delicately-hued quartz

— **Artistic Kitchens:** Imported European cabinets. Premium hardware & drawer pulls coordinate this artistic design. **Caesarstone®** quartz counter tops. **Icon Glass®** kitchen back-splash is a mega-sized mosaic that shouts luxury—very upscale and modern, and very dramatic. Sleek **Whirlpool® Stainless Steel Energy Star** appliances. Dramatic under-cabinet lighting. Under mount, **Zero Radius Kitchen Sinks**. **Opella®** kitchen faucet with a curved coil-spring design

— **Provocative Spa-Inspired Bathrooms:** Imported European vanities with premium hardware & drawer pulls. Designer custom framed mirror. River White Granite countertops and backsplashes. Our **Kohler Spa Soaking Bathtubs** are sleek with an ergonomic design **Milano Bathroom Faucet** is an elegant addition to your bathroom with its unique lavatory faucet. Rain shower head. **Opella** china bathroom sink. **Moen®** adjustable curved shower rod in brushed nickel.

— **Radiant & Compelling Living Areas:** Lush, barefoot-friendly carpeting and imported, wood-styled tiles throughout the living spaces. **Tile Soundproofing Underlayment.** This means that under your tile we have placed soundproofing. We understand sound transfer and work to reduce transfer for your living experience.

— Private balconies. Time-saving, conveniently-located energy star washers and dryers in every apartment residence. Energy-efficient hurricane resistant windows and sliding glass doors. Contemporary ceiling fans.

— USB Receptacle: 2 high-speed **USB Charging Ports** in the main bedroom and kitchen.

TheFlatsAtCityPlace.Com
📞 (305) 800-3528

3555 NW 83 Avenue, Suite 100; Doral, FL 33122
InfoFlats@relatedgroup.com



ORAL REPRESENTATIONS CANNOT BE RELIED UPON AS CORRECTLY STATING THE REPRESENTATIONS OF THE LESSOR. ALL SQUARE FOOTAGES QUOTED ARE APPROXIMATE AND ARE CONDITIONED SPACE, FLOORPLANS AND DEVELOPMENT PLANS ARE SUBJECT TO CHANGE.

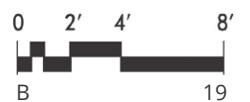
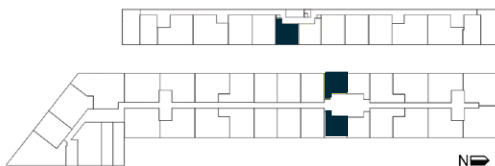
STUDIO B

1 BATHROOM ▪ 518 Square Feet



THEFLATS

LUXURY APARTMENTS



STUDIO B

— **The Flats Residences** were inspired by international luxury with a thoughtful array of interior finishes. Informed and inspired by international luxury resort design, while perfectly complementing CityPlace in its sleek, urban lifestyle sensibility. The color palette of your apartment is based on the light as it touches surfaces with airy brightness, spotlighting chrome, wood and delicately-hued quartz

— **Artistic Kitchens:** Imported European cabinets. Premium hardware & drawer pulls coordinate this artistic design. **Caesarstone®** quartz counter tops. **Icon Glass®** kitchen back-splash is a mega-sized mosaic that shouts luxury—very upscale and modern, and very dramatic. Sleek **Whirlpool® Stainless Steel Energy Star** appliances. Dramatic under-cabinet lighting. Under mount, **Zero Radius Kitchen Sinks**. **Opella®** kitchen faucet with a curved coil-spring design

— **Provocative Spa-Inspired Bathrooms:** Imported European vanities with premium hardware & drawer pulls. Designer custom framed mirror. River White Granite countertops and backsplashes. Our **Kohler Spa Soaking Bathtubs** are sleek with an ergonomic design. **Milano Bathroom Faucet** is an elegant addition to your bathroom with its unique lavatory faucet. Rain shower head. **Opella** china bathroom sink. **Moen®** adjustable curved shower rod in brushed nickel.

— **Radiant & Compelling Living Areas:** Lush, barefoot-friendly carpeting and imported, wood-styled tiles throughout the living spaces. **Tile Soundproofing Underlayment.** This means that under your tile we have placed soundproofing. We understand sound transfer and work to reduce transfer for your living experience.

— Private balconies. Time-saving, conveniently-located energy star washers and dryers in every apartment residence. Energy-efficient hurricane resistant windows and sliding glass doors. Contemporary ceiling fans.

— USB Receptacle: 2 high-speed **USB Charging Ports** in the main bedroom and kitchen.

TheFlatsAtCityPlace.Com
📞 (305) 800-3528

3555 NW 83 Avenue, Suite 100; Doral, FL 33122
InfoFlats@relatedgroup.com



ORAL REPRESENTATIONS CANNOT BE RELIED UPON AS CORRECTLY STATING THE REPRESENTATIONS OF THE LESSOR. ALL SQUARE FOOTAGES QUOTED ARE APPROXIMATE AND ARE CONDITIONED SPACE, FLOORPLANS AND DEVELOPMENT PLANS ARE SUBJECT TO CHANGE.

STUDIO B-B

1 BATHROOM ▪ 574 Square Feet



THEFLATS

LUXURY APARTMENTS



STUDIO B-B

— **The Flats Residences** were inspired by international luxury with a thoughtful array of interior finishes. Informed and inspired by international luxury resort design, while perfectly complementing CityPlace in its sleek, urban lifestyle sensibility. The color palette of your apartment is based on the light as it touches surfaces with airy brightness, spotlighting chrome, wood and delicately-hued quartz

— **Artistic Kitchens:** Imported European cabinets. Premium hardware & drawer pulls coordinate this artistic design. **Caesarstone®** quartz counter tops. **Icon Glass®** kitchen back-splash is a mega-sized mosaic that shouts luxury—very upscale and modern, and very dramatic. Sleek **Whirlpool® Stainless Steel Energy Star** appliances. Dramatic under-cabinet lighting. Under mount, **Zero Radius Kitchen Sinks**. **Opella®** kitchen faucet with a curved coil-spring design

— **Provocative Spa-Inspired Bathrooms:** Imported European vanities with premium hardware & drawer pulls. Designer custom framed mirror. River White Granite countertops and backsplashes. Our **Kohler Spa Soaking Bathtubs** are sleek with an ergonomic design. **Milano Bathroom Faucet** is an elegant addition to your bathroom with its unique lavatory faucet. Rain shower head. **Opella** china bathroom sink. **Moen®** adjustable curved shower rod in brushed nickel.

— **Radiant & Compelling Living Areas:** Lush, barefoot-friendly carpeting and imported, wood-styled tiles throughout the living spaces. **Tile Soundproofing Underlayment.** This means that under your tile we have placed soundproofing. We understand sound transfer and work to reduce transfer for your living experience.

— Private balconies. Time-saving, conveniently-located energy star washers and dryers in every apartment residence. Energy-efficient hurricane resistant windows and sliding glass doors. Contemporary ceiling fans.

— USB Receptacle: 2 high-speed **USB Charging Ports** in the main bedroom and kitchen.

TheFlatsAtCityPlace.Com
📞 (305) 800-3528

3555 NW 83 Avenue, Suite 100; Doral, FL 33122
InfoFlats@relatedgroup.com



ORAL REPRESENTATIONS CANNOT BE RELIED UPON AS CORRECTLY STATING THE REPRESENTATIONS OF THE LESSOR. ALL SQUARE FOOTAGES QUOTED ARE APPROXIMATE AND ARE CONDITIONED SPACE, FLOORPLANS AND DEVELOPMENT PLANS ARE SUBJECT TO CHANGE.

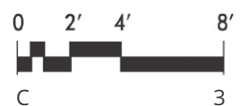
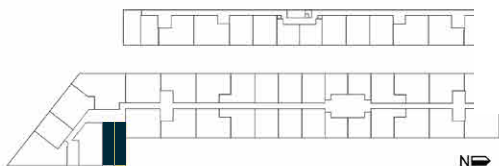
STUDIO OVAL C

1 BATHROOM ▪ 571 Square Feet



THEFLATS

LUXURY APARTMENTS



STUDIO OVAL C

— **The Flats Residences** were inspired by international luxury with a thoughtful array of interior finishes. Informed and inspired by international luxury resort design, while perfectly complementing CityPlace in its sleek, urban lifestyle sensibility. The color palette of your apartment is based on the light as it touches surfaces with airy brightness, spotlighting chrome, wood and delicately-hued quartz

— **Artistic Kitchens:** Imported European cabinets. Premium hardware & drawer pulls coordinate this artistic design. **Caesarstone®** quartz counter tops. **Icon Glass®** kitchen back-splash is a mega-sized mosaic that shouts luxury—very upscale and modern, and very dramatic. Sleek **Whirlpool® Stainless Steel Energy Star** appliances. Dramatic under-cabinet lighting. Under mount, **Zero Radius Kitchen Sinks**. **Opella®** kitchen faucet with a curved coil-spring design

— **Provocative Spa-Inspired Bathrooms:** Imported European vanities with premium hardware & drawer pulls. Designer custom framed mirror. River White Granite countertops and backsplashes. Our **Kohler Spa Soaking Bathtubs** are sleek with an ergonomic design. **Milano Bathroom Faucet** is an elegant addition to your bathroom with its unique lavatory faucet. Rain shower head. **Opella** china bathroom sink. **Moen®** adjustable curved shower rod in brushed nickel.

— **Radiant & Compelling Living Areas:** Lush, barefoot-friendly carpeting and imported, wood-styled tiles throughout the living spaces. **Tile Soundproofing Underlayment.** This means that under your tile we have placed soundproofing. We understand sound transfer and work to reduce transfer for your living experience.

— Private balconies. Time-saving, conveniently-located energy star washers and dryers in every apartment residence. Energy-efficient hurricane resistant windows and sliding glass doors. Contemporary ceiling fans.

— USB Receptacle: 2 high-speed **USB Charging Ports** in the main bedroom and kitchen.

TheFlatsAtCityPlace.Com
📞 (305) 800-3528

3555 NW 83 Avenue, Suite 100; Doral, FL 33122
InfoFlats@relatedgroup.com



ORAL REPRESENTATIONS CANNOT BE RELIED UPON AS CORRECTLY STATING THE REPRESENTATIONS OF THE LESSOR. ALL SQUARE FOOTAGES QUOTED ARE APPROXIMATE AND ARE CONDITIONED SPACE, FLOORPLANS AND DEVELOPMENT PLANS ARE SUBJECT TO CHANGE.