

DISTRICT 225
MIAMI

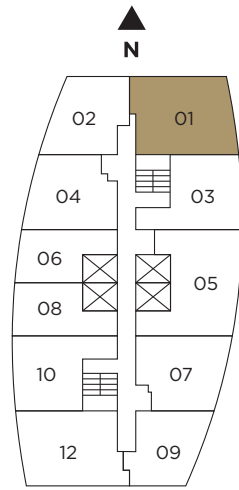
SALES GALLERY
75 SE 6th St, Miami, FL 33131

DISTRICT 225
225 N. Miami Ave, Miami, FL 33128
786.522.5332

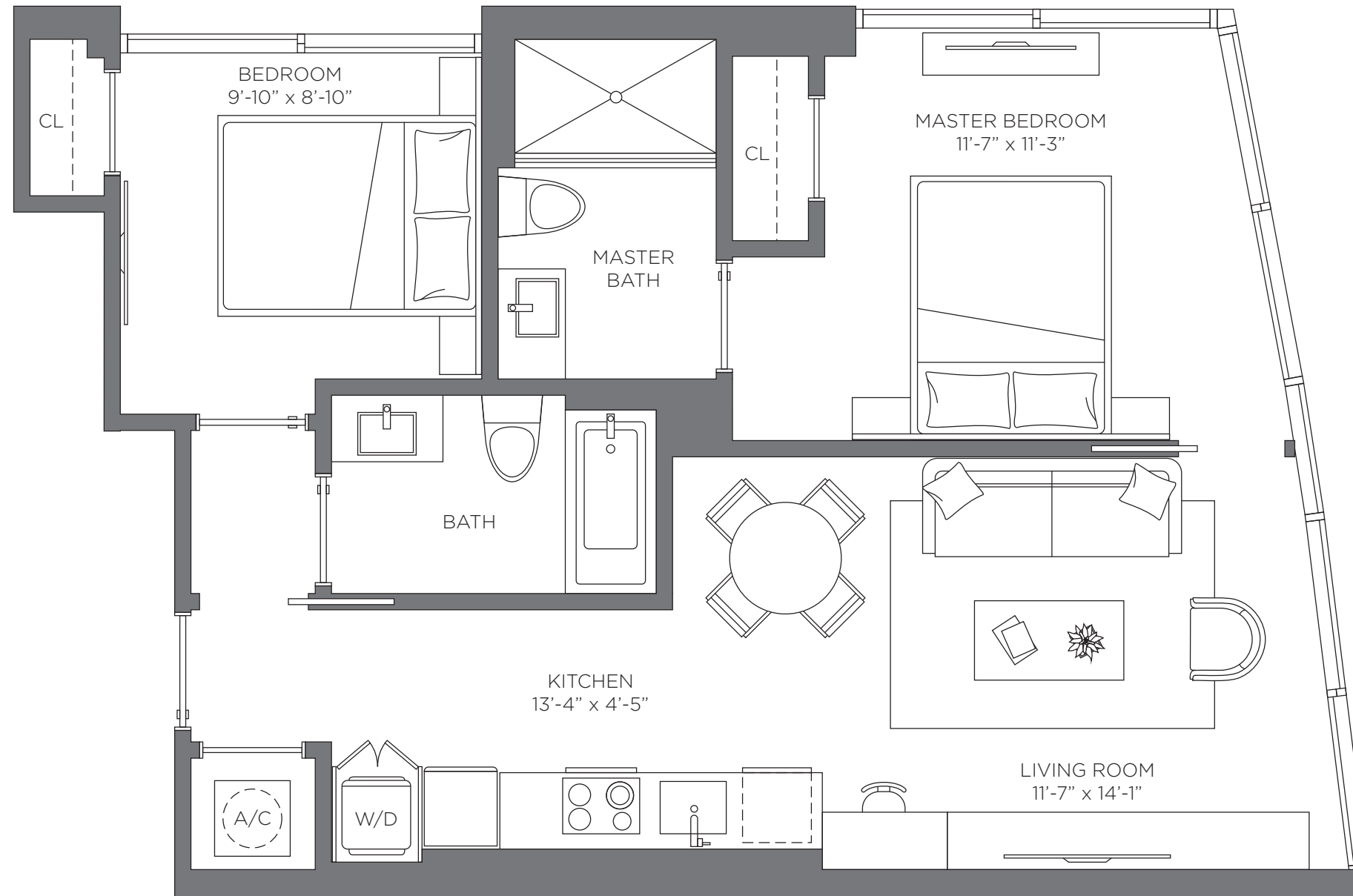
District225Miami.com

UNIT 01





UNIT 01
 2 BED | 2 BATH
 786 sq. ft.
 73.02 m²



Exclusive Sales and Marketing by Related Realty in collaboration with Fortune Development Sales

The dimensions stated for this unit floor plan are approximate because there are various recognized methods for calculating the square footage of a unit. The square footage stated here is calculated from the exterior boundaries of the exterior walls to the centerline of interior demising walls without deductions for cutouts, curves, or architectural features. This method typically results in quoted dimensions greater than the dimensions that would be determined by using other accepted methods. The definition of "Unit" and the calculation method to be relied upon is set forth in the Developer's Prospectus. The illustrations and images are conceptual and may vary from concept to actual construction. The floor plan, unit layout, locations of windows, doors, closets, plumbing fixtures, mechanical equipment, appliances, structural elements, architectural design elements, and the uses, configurations, and entries to rooms may change with based on final approved plans, permitting, and construction. The furniture plan and the uses of space illustrated are suggested uses only and not intended to guaranty any specific use of space. Furnishings, design features, fixtures, and décor illustrated are conceptual and may vary upon completion. The Developer, Parcel C, LLC, is a licensee of The Related Group and ROVR Parcel C, LLC, neither of which is the Developer. © 2021 with all rights reserved Parcel C, LLC.

DISTRICT 225
 MIAMI

DISTRICT 225
MIAMI

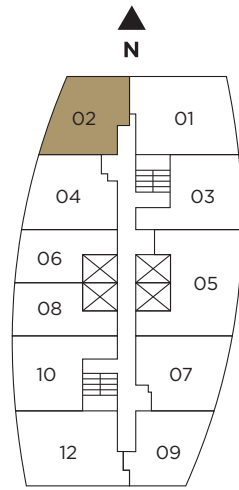
SALES GALLERY
75 SE 6th St, Miami, FL 33131

DISTRICT 225
225 N. Miami Ave, Miami, FL 33128
786.522.5332

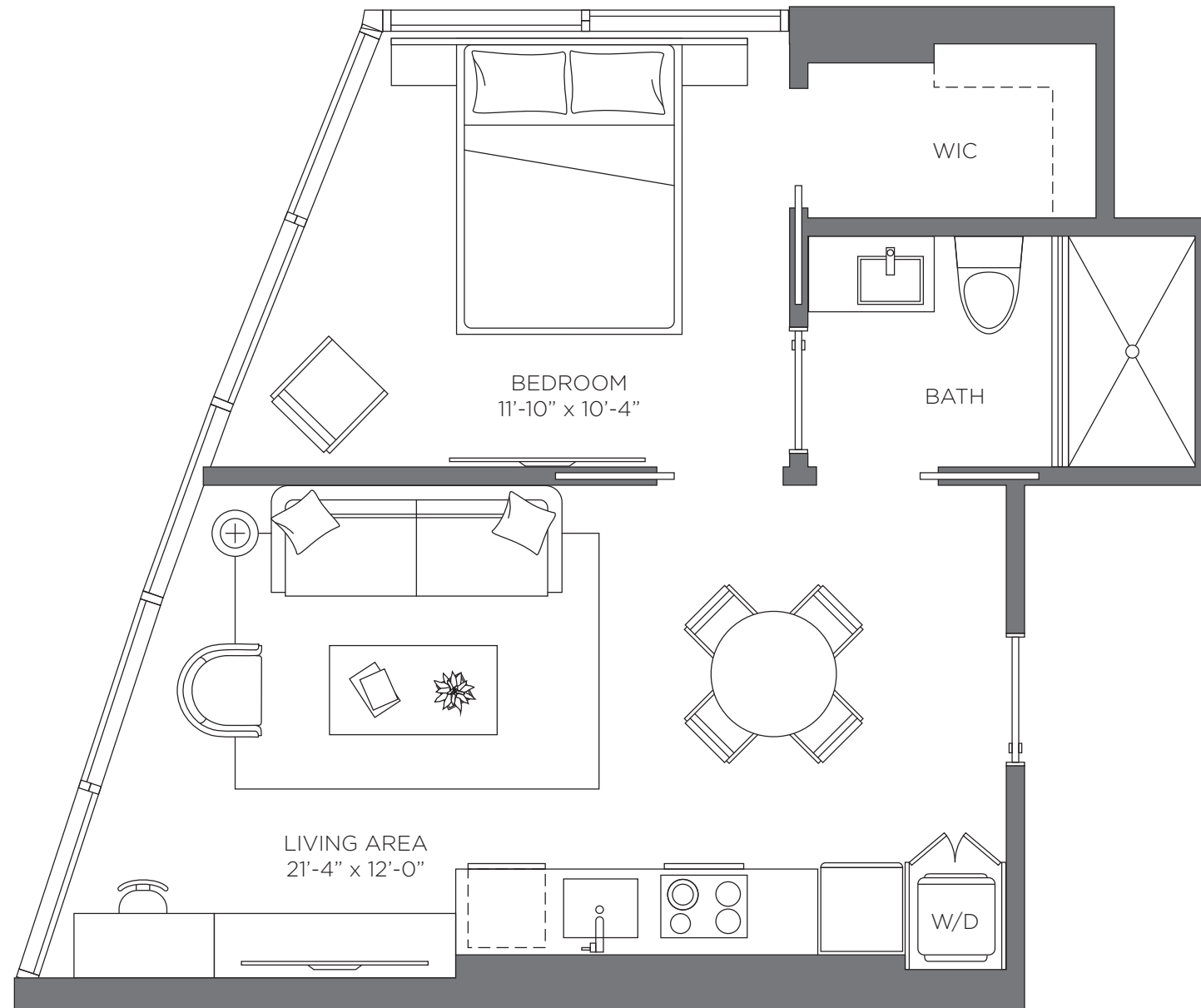
District225Miami.com

UNIT 02





UNIT 02
 1 BED | 1 BATH
 558 sq. ft.
 51.83 m²



DISTRICT 225
 MIAMI

Exclusive Sales and Marketing by Related Realty in collaboration with Fortune Development Sales

The dimensions stated for this unit floor plan are approximate because there are various recognized methods for calculating the square footage of a unit. The square footage stated here is calculated from the exterior boundaries of the exterior walls to the centerline of interior demising walls without deductions for cutouts, curves, or architectural features. This method typically results in quoted dimensions greater than the dimensions that would be determined by using other accepted methods. The definition of "Unit" and the calculation method to be relied upon is set forth in the Developer's Prospectus. The illustrations and images are conceptual and may vary from concept to actual construction. The floor plan, unit layout, locations of windows, doors, closets, plumbing fixtures, mechanical equipment, appliances, structural elements, architectural design elements, and the uses, configurations, and entries to rooms may change with based on final approved plans, permitting, and construction. The furniture plan and the uses of space illustrated are suggested uses only and not intended to guaranty any specific use of space. Furnishings, design features, fixtures, and décor illustrated are conceptual and may vary upon completion. The Developer, Parcel C, LLC, is a licensee of The Related Group and ROVR Parcel C, LLC, neither of which is the Developer. © 2021 with all rights reserved Parcel C, LLC.

DISTRICT 225
MIAMI

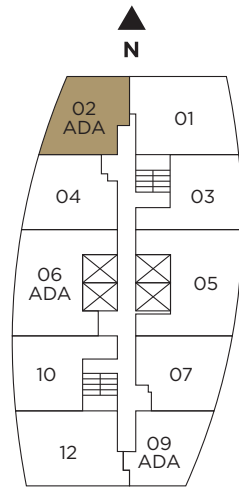
SALES GALLERY
75 SE 6th St, Miami, FL 33131

DISTRICT 225
225 N. Miami Ave, Miami, FL 33128
786.522.5332

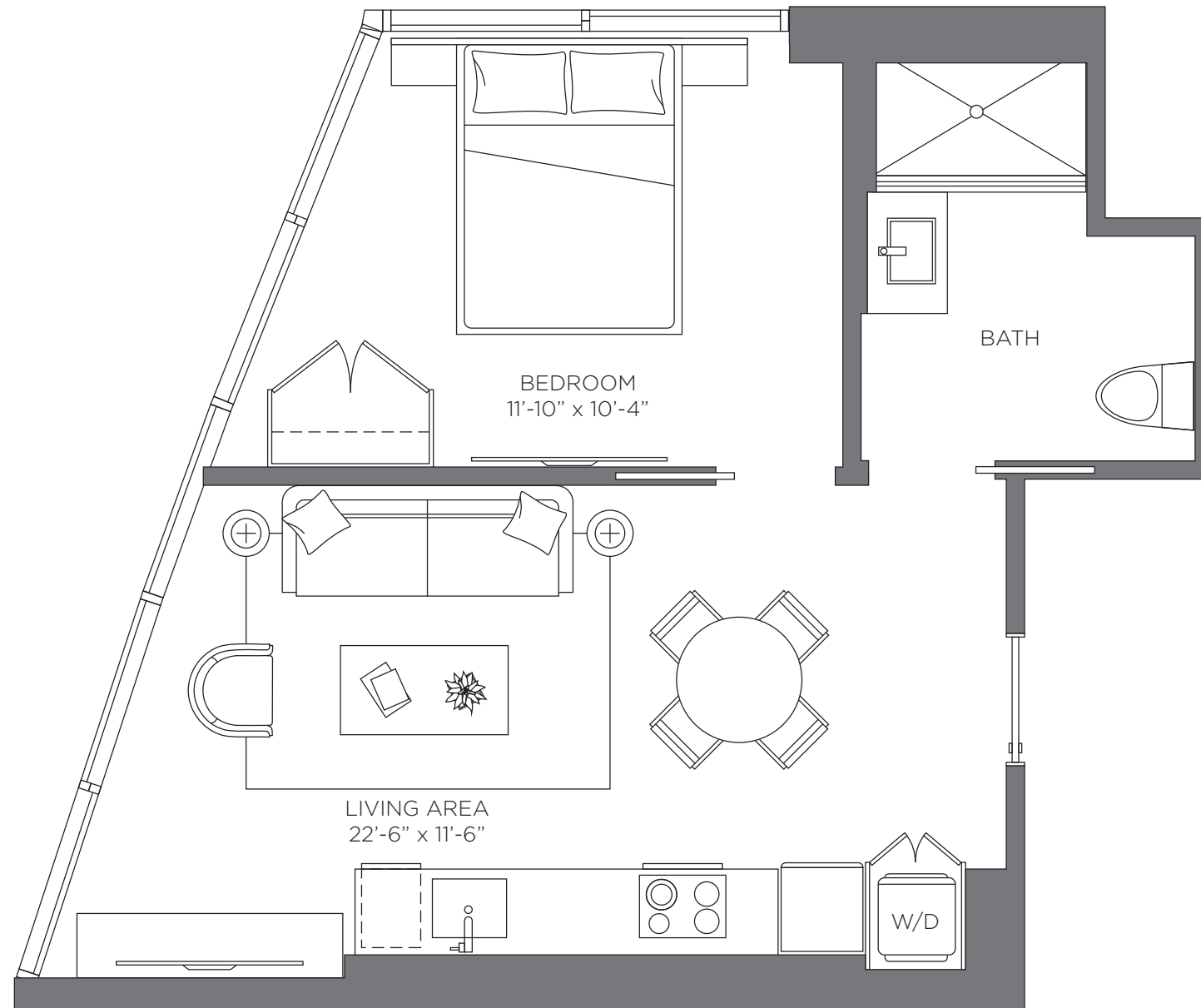
District225Miami.com

UNIT 02 ADA





UNIT 02 ADA
 1 BED | 1 BATH
 558 sq. ft.
 51.83 m²



DISTRICT 225
 MIAMI

Exclusive Sales and Marketing by Related Realty in collaboration with Fortune Development Sales

The dimensions stated for this unit floor plan are approximate because there are various recognized methods for calculating the square footage of a unit. The square footage stated here is calculated from the exterior boundaries of the exterior walls to the centerline of interior demising walls without deductions for cutouts, curves, or architectural features. This method typically results in quoted dimensions greater than the dimensions that would be determined by using other accepted methods. The definition of "Unit" and the calculation method to be relied upon is set forth in the Developer's Prospectus. The illustrations and images are conceptual and may vary from concept to actual construction. The floor plan, unit layout, locations of windows, doors, closets, plumbing fixtures, mechanical equipment, appliances, structural elements, architectural design elements, and the uses, configurations, and entries to rooms may change with based on final approved plans, permitting, and construction. The furniture plan and the uses of space illustrated are suggested uses only and not intended to guaranty any specific use of space. Furnishings, design features, fixtures, and décor illustrated are conceptual and may vary upon completion. The Developer, Parcel C, LLC, is a licensee of The Related Group and ROVR Parcel C, LLC, neither of which is the Developer. © 2021 with all rights reserved Parcel C, LLC.

DISTRICT 225
MIAMI

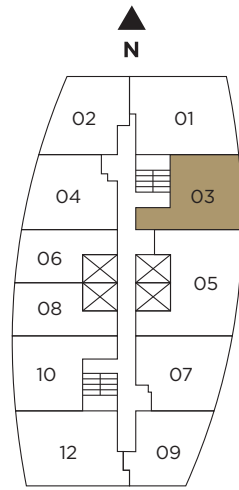
SALES GALLERY
75 SE 6th St, Miami, FL 33131

DISTRICT 225
225 N. Miami Ave, Miami, FL 33128
786.522.5332

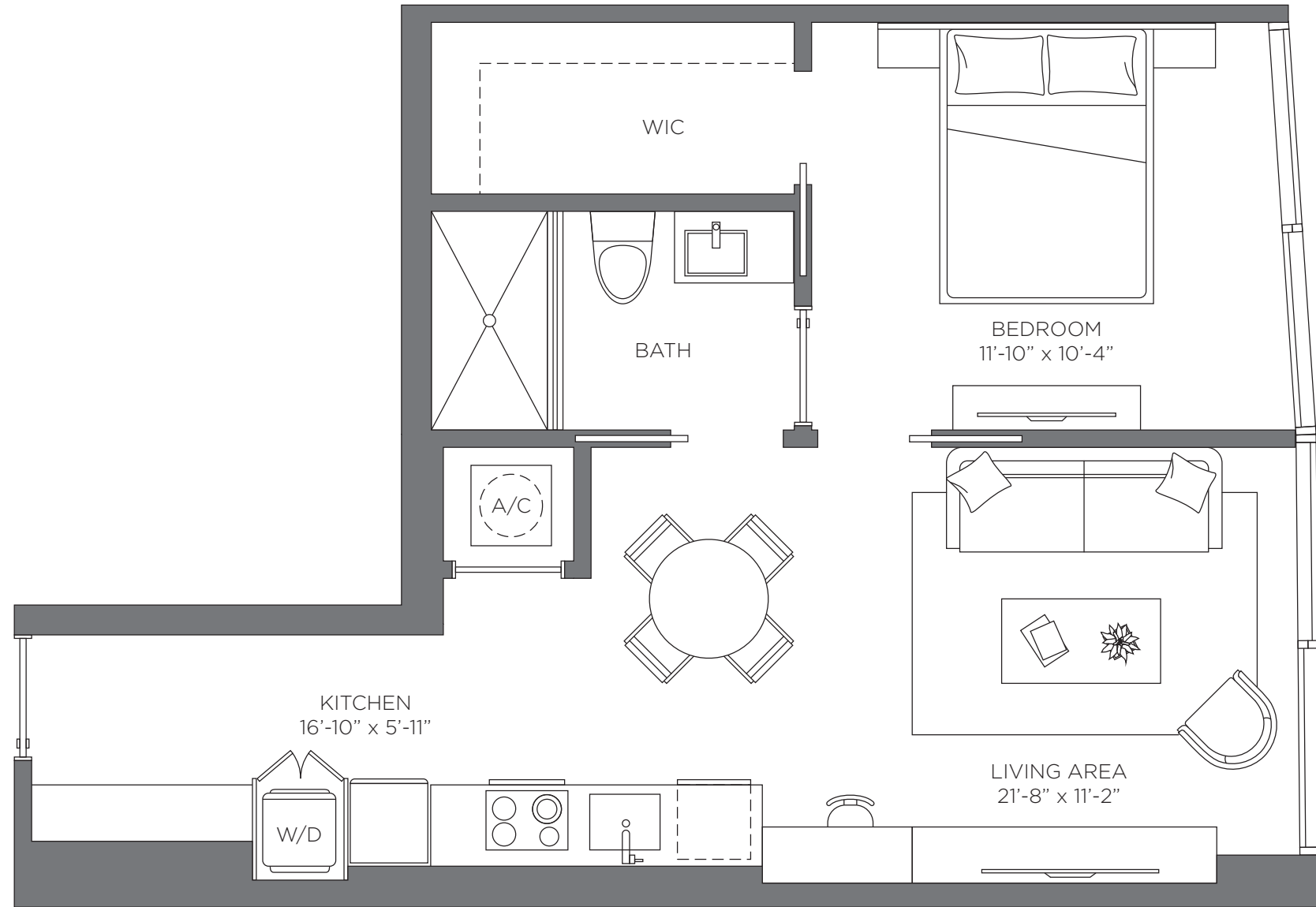
District225Miami.com

UNIT 03





UNIT 03
 1 BED | 1 BATH
 615 sq. ft.
 57.13 m²



DISTRICT 225
 MIAMI

Exclusive Sales and Marketing by Related Realty in collaboration with Fortune Development Sales

The dimensions stated for this unit floor plan are approximate because there are various recognized methods for calculating the square footage of a unit. The square footage stated here is calculated from the exterior boundaries of the exterior walls to the centerline of interior demising walls without deductions for cutouts, curves, or architectural features. This method typically results in quoted dimensions greater than the dimensions that would be determined by using other accepted methods. The definition of "Unit" and the calculation method to be relied upon is set forth in the Developer's Prospectus. The illustrations and images are conceptual and may vary from concept to actual construction. The floor plan, unit layout, locations of windows, doors, closets, plumbing fixtures, mechanical equipment, appliances, structural elements, architectural design elements, and the uses, configurations, and entries to rooms may change with based on final approved plans, permitting, and construction. The furniture plan and the uses of space illustrated are suggested uses only and not intended to guaranty any specific use of space. Furnishings, design features, fixtures, and décor illustrated are conceptual and may vary upon completion. The Developer, Parcel C, LLC, is a licensee of The Related Group and ROVR Parcel C, LLC, neither of which is the Developer. © 2021 with all rights reserved Parcel C, LLC.

DISTRICT 225
MIAMI

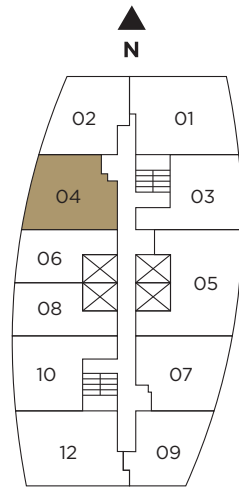
SALES GALLERY
75 SE 6th St, Miami, FL 33131

DISTRICT 225
225 N. Miami Ave, Miami, FL 33128
786.522.5332

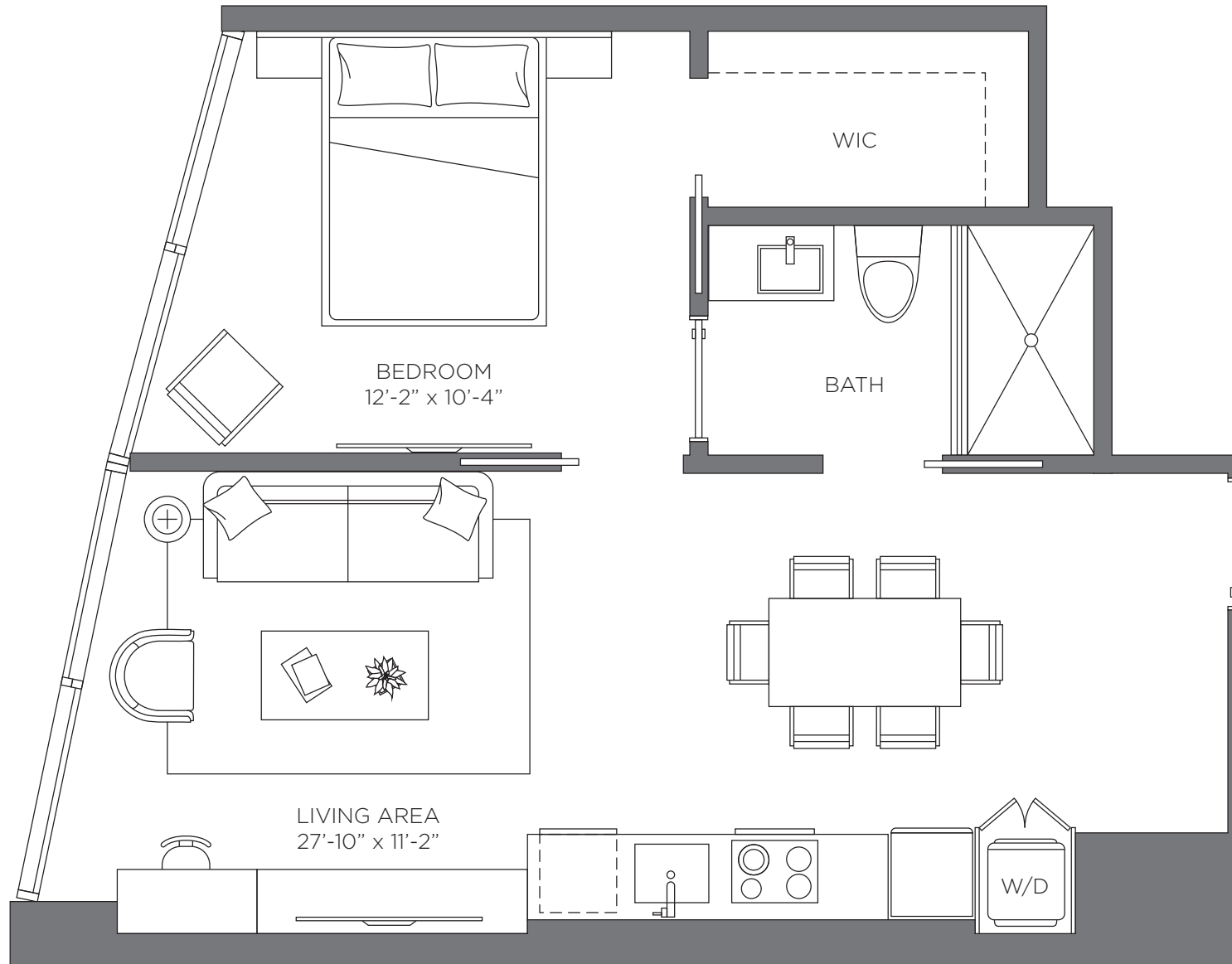
District225Miami.com

UNIT 04





UNIT 04
 1 BED | 1 BATH
 608 sq. ft.
 56.48 m²



DISTRICT 225
 MIAMI

Exclusive Sales and Marketing by Related Realty in collaboration with Fortune Development Sales

The dimensions stated for this unit floor plan are approximate because there are various recognized methods for calculating the square footage of a unit. The square footage stated here is calculated from the exterior boundaries of the exterior walls to the centerline of interior demising walls without deductions for cutouts, curves, or architectural features. This method typically results in quoted dimensions greater than the dimensions that would be determined by using other accepted methods. The definition of "Unit" and the calculation method to be relied upon is set forth in the Developer's Prospectus. The illustrations and images are conceptual and may vary from concept to actual construction. The floor plan, unit layout, locations of windows, doors, closets, plumbing fixtures, mechanical equipment, appliances, structural elements, architectural design elements, and the uses, configurations, and entries to rooms may change with based on final approved plans, permitting, and construction. The furniture plan and the uses of space illustrated are suggested uses only and not intended to guaranty any specific use of space. Furnishings, design features, fixtures, and décor illustrated are conceptual and may vary upon completion. The Developer, Parcel C, LLC, is a licensee of The Related Group and ROVR Parcel C, LLC, neither of which is the Developer. © 2021 with all rights reserved Parcel C, LLC.

DISTRICT 225
MIAMI

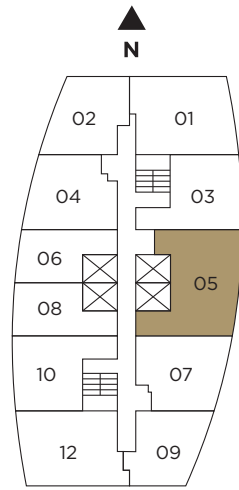
SALES GALLERY
75 SE 6th St, Miami, FL 33131

DISTRICT 225
225 N. Miami Ave, Miami, FL 33128
786.522.5332

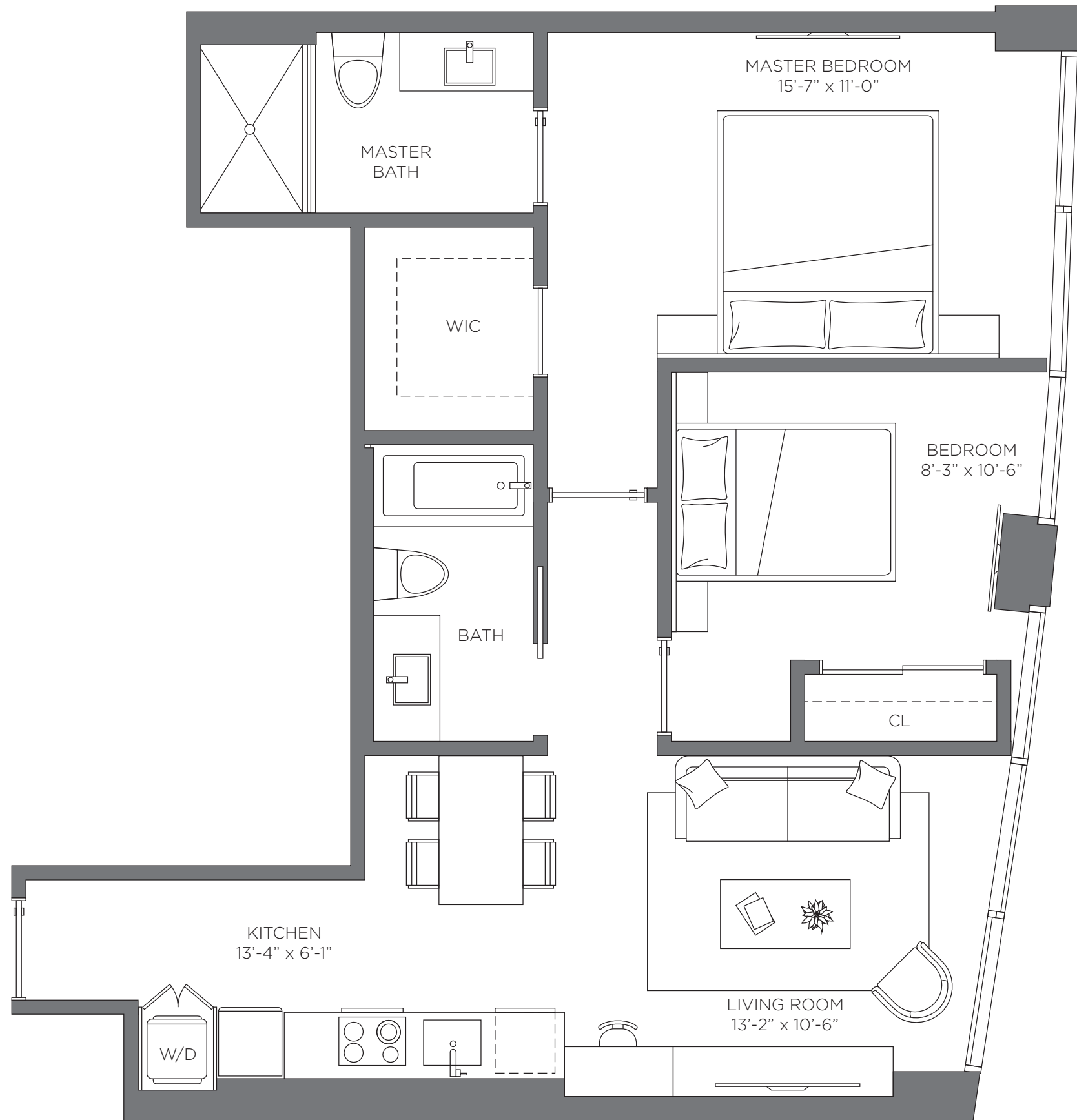
District225Miami.com

UNIT 05





UNIT 05
 2 BED | 2 BATH
 884 sq. ft.
 82.12 m²



Exclusive Sales and Marketing by Related Realty in collaboration with Fortune Development Sales

The dimensions stated for this unit floor plan are approximate because there are various recognized methods for calculating the square footage of a unit. The square footage stated here is calculated from the exterior boundaries of the exterior walls to the centerline of interior demising walls without deductions for cutouts, curves, or architectural features. This method typically results in quoted dimensions greater than the dimensions that would be determined by using other accepted methods. The definition of "Unit" and the calculation method to be relied upon is set forth in the Developer's Prospectus. The illustrations and images are conceptual and may vary from concept to actual construction. The floor plan, unit layout, locations of windows, doors, closets, plumbing fixtures, mechanical equipment, appliances, structural elements, architectural design elements, and the uses, configurations, and entries to rooms may change with based on final approved plans, permitting, and construction. The furniture plan and the uses of space illustrated are suggested uses only and not intended to guaranty any specific use of space. Furnishings, design features, fixtures, and décor illustrated are conceptual and may vary upon completion. The Developer, Parcel C, LLC, is a licensee of The Related Group and ROVR Parcel C, LLC, neither of which is the Developer. © 2021 with all rights reserved Parcel C, LLC.

DISTRICT 225
 MIAMI

DISTRICT 225
MIAMI

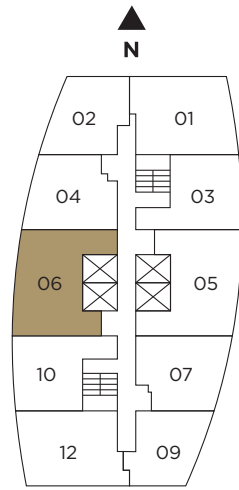
SALES GALLERY
75 SE 6th St, Miami, FL 33131

DISTRICT 225
225 N. Miami Ave, Miami, FL 33128
786.522.5332

District225Miami.com

UNIT 06



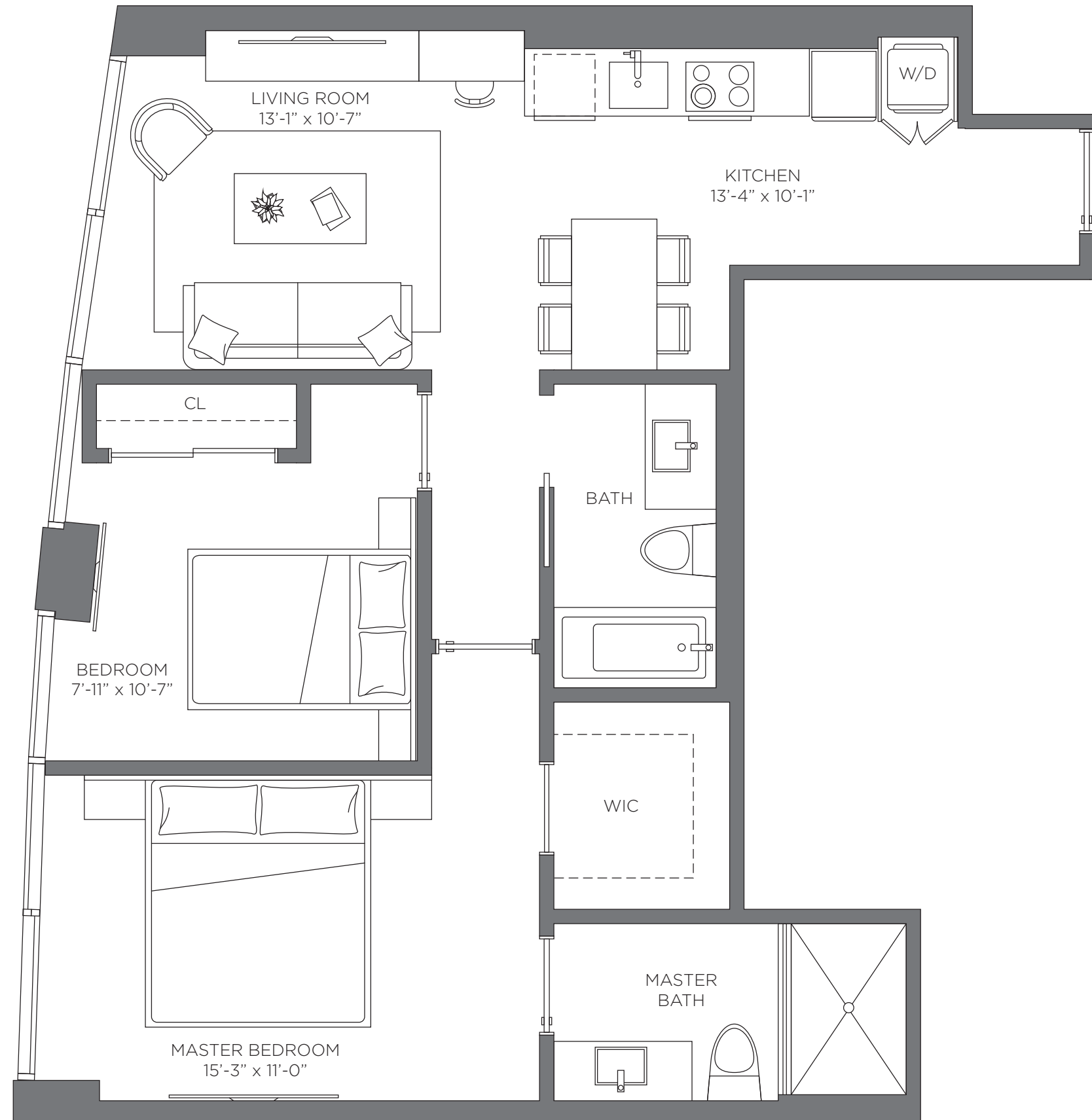


UNIT 06 - FROM THE 34TH - 37TH FLOOR

2 BED | 2 BATH

878 sq. ft.

81.56 m²



Exclusive Sales and Marketing by Related Realty in collaboration with Fortune Development Sales

The dimensions stated for this unit floor plan are approximate because there are various recognized methods for calculating the square footage of a unit. The square footage stated here is calculated from the exterior boundaries of the exterior walls to the centerline of interior demising walls without deductions for cutouts, curves, or architectural features. This method typically results in quoted dimensions greater than the dimensions that would be determined by using other accepted methods. The definition of "Unit" and the calculation method to be relied upon is set forth in the Developer's Prospectus. The illustrations and images are conceptual and may vary from concept to actual construction. The floor plan, unit layout, locations of windows, doors, closets, plumbing fixtures, mechanical equipment, appliances, structural elements, architectural design elements, and the uses, configurations, and entries to rooms may change with based on final approved plans, permitting, and construction. The furniture plan and the uses of space illustrated are suggested uses only and not intended to guaranty any specific use of space. Furnishings, design features, fixtures, and décor illustrated are conceptual and may vary upon completion. The Developer, Parcel C, LLC, is a licensee of The Related Group and ROVR Parcel C, LLC, neither of which is the Developer. © 2021 with all rights reserved Parcel C, LLC.

DISTRICT 225
MIAMI

DISTRICT 225
MIAMI

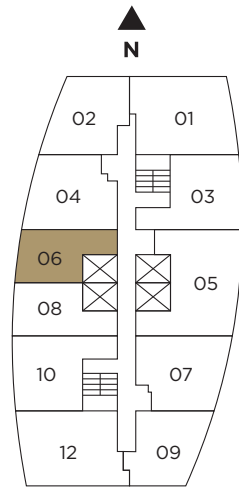
SALES GALLERY
75 SE 6th St, Miami, FL 33131

DISTRICT 225
225 N. Miami Ave, Miami, FL 33128
786.522.5332

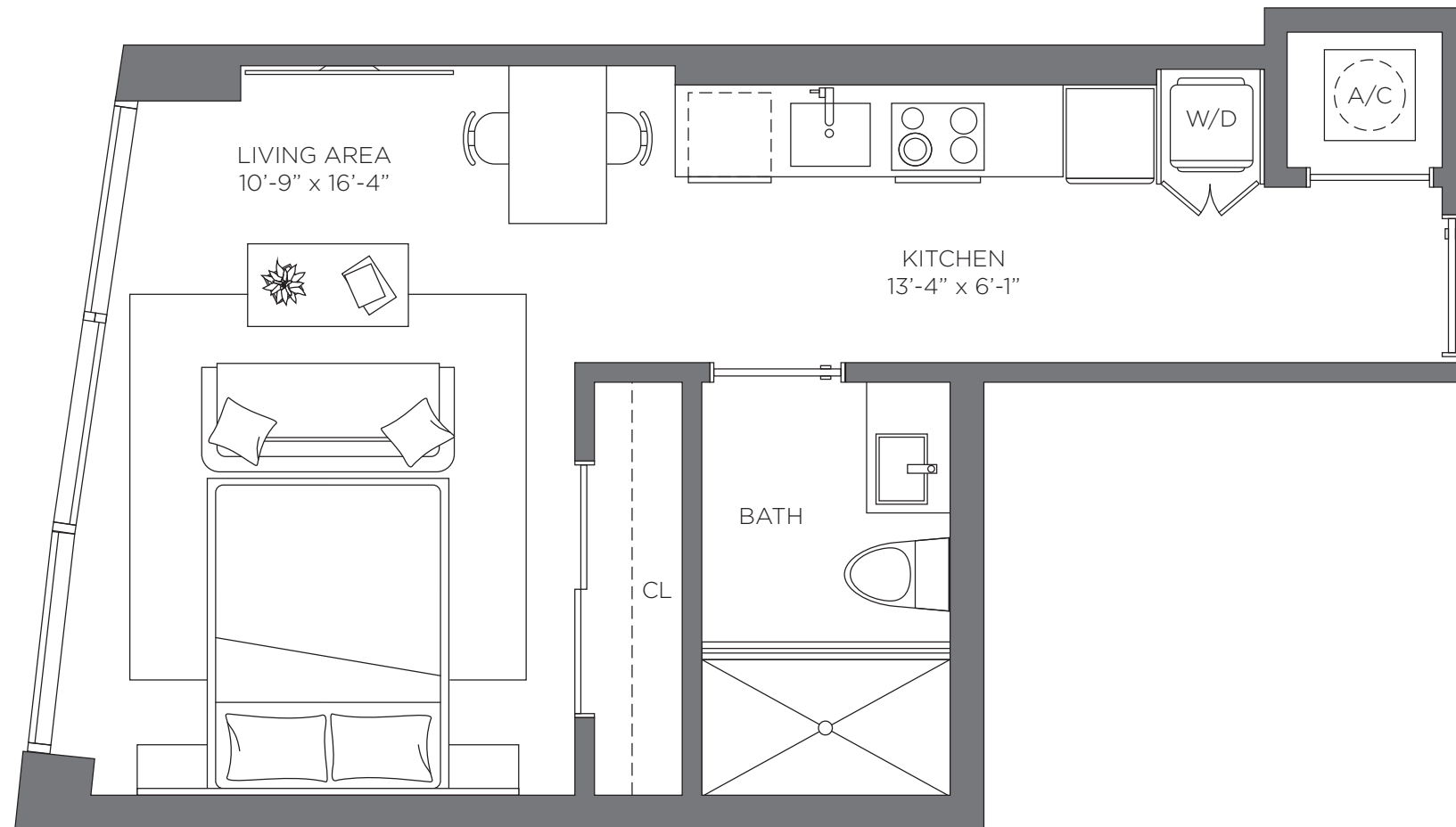
District225Miami.com

UNIT 06





UNIT 06 - TYPICAL FLOOR
 STUDIO | 1 BATH
 458 sq. ft.
 42.54 m²



DISTRICT 225
 MIAMI

Exclusive Sales and Marketing by Related Realty in collaboration with Fortune Development Sales

The dimensions stated for this unit floor plan are approximate because there are various recognized methods for calculating the square footage of a unit. The square footage stated here is calculated from the exterior boundaries of the exterior walls to the centerline of interior demising walls without deductions for cutouts, curves, or architectural features. This method typically results in quoted dimensions greater than the dimensions that would be determined by using other accepted methods. The definition of "Unit" and the calculation method to be relied upon is set forth in the Developer's Prospectus. The illustrations and images are conceptual and may vary from concept to actual construction. The floor plan, unit layout, locations of windows, doors, closets, plumbing fixtures, mechanical equipment, appliances, structural elements, architectural design elements, and the uses, configurations, and entries to rooms may change with based on final approved plans, permitting, and construction. The furniture plan and the uses of space illustrated are suggested uses only and not intended to guaranty any specific use of space. Furnishings, design features, fixtures, and décor illustrated are conceptual and may vary upon completion. The Developer, Parcel C, LLC, is a licensee of The Related Group and ROVR Parcel C, LLC, neither of which is the Developer. © 2021 with all rights reserved Parcel C, LLC.

DISTRICT 225
MIAMI

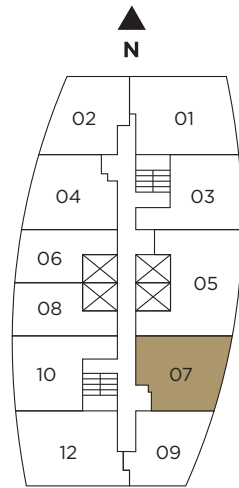
SALES GALLERY
75 SE 6th St, Miami, FL 33131

DISTRICT 225
225 N. Miami Ave, Miami, FL 33128
786.522.5332

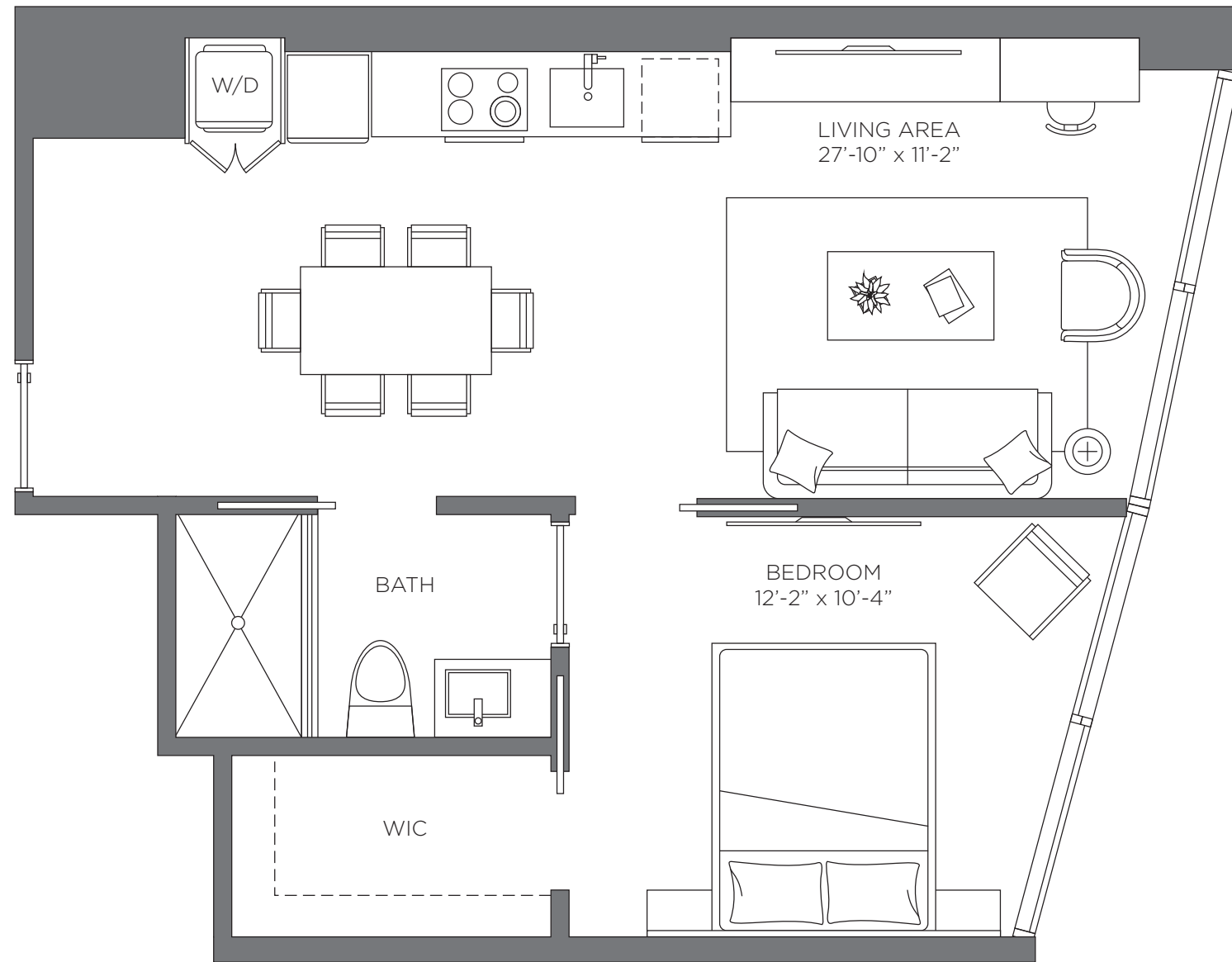
District225Miami.com

UNIT 07





UNIT 07
 1 BED | 1 BATH
 608 sq. ft.
 56.48 m²



DISTRICT 225
 MIAMI

Exclusive Sales and Marketing by Related Realty in collaboration with Fortune Development Sales

The dimensions stated for this unit floor plan are approximate because there are various recognized methods for calculating the square footage of a unit. The square footage stated here is calculated from the exterior boundaries of the exterior walls to the centerline of interior demising walls without deductions for cutouts, curves, or architectural features. This method typically results in quoted dimensions greater than the dimensions that would be determined by using other accepted methods. The definition of "Unit" and the calculation method to be relied upon is set forth in the Developer's Prospectus. The illustrations and images are conceptual and may vary from concept to actual construction. The floor plan, unit layout, locations of windows, doors, closets, plumbing fixtures, mechanical equipment, appliances, structural elements, architectural design elements, and the uses, configurations, and entries to rooms may change with based on final approved plans, permitting, and construction. The furniture plan and the uses of space illustrated are suggested uses only and not intended to guaranty any specific use of space. Furnishings, design features, fixtures, and décor illustrated are conceptual and may vary upon completion. The Developer, Parcel C, LLC, is a licensee of The Related Group and ROVR Parcel C, LLC, neither of which is the Developer. © 2021 with all rights reserved Parcel C, LLC.

DISTRICT 225
MIAMI

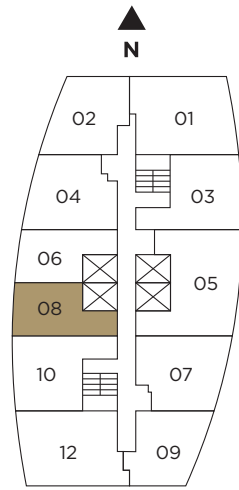
SALES GALLERY
75 SE 6th St, Miami, FL 33131

DISTRICT 225
225 N. Miami Ave, Miami, FL 33128
786.522.5332

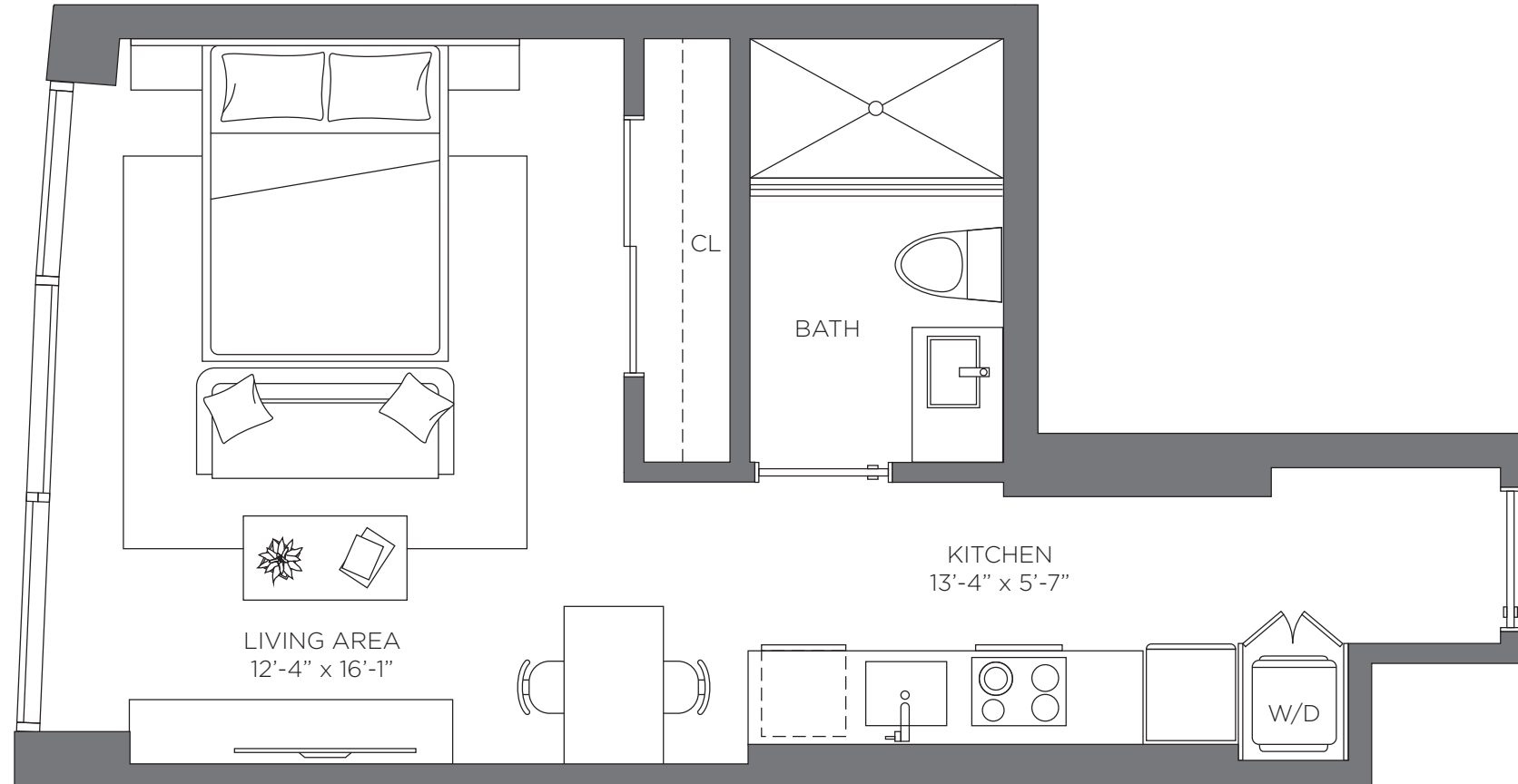
District225Miami.com

UNIT 08





UNIT 08
 STUDIO | 1 BATH
 469 sq. ft.
 43.57 m²



DISTRICT 225
 MIAMI

Exclusive Sales and Marketing by Related Realty in collaboration with Fortune Development Sales

The dimensions stated for this unit floor plan are approximate because there are various recognized methods for calculating the square footage of a unit. The square footage stated here is calculated from the exterior boundaries of the exterior walls to the centerline of interior demising walls without deductions for cutouts, curves, or architectural features. This method typically results in quoted dimensions greater than the dimensions that would be determined by using other accepted methods. The definition of "Unit" and the calculation method to be relied upon is set forth in the Developer's Prospectus. The illustrations and images are conceptual and may vary from concept to actual construction. The floor plan, unit layout, locations of windows, doors, closets, plumbing fixtures, mechanical equipment, appliances, structural elements, architectural design elements, and the uses, configurations, and entries to rooms may change with based on final approved plans, permitting, and construction. The furniture plan and the uses of space illustrated are suggested uses only and not intended to guaranty any specific use of space. Furnishings, design features, fixtures, and décor illustrated are conceptual and may vary upon completion. The Developer, Parcel C, LLC, is a licensee of The Related Group and ROVR Parcel C, LLC, neither of which is the Developer. © 2021 with all rights reserved Parcel C, LLC.

DISTRICT 225
MIAMI

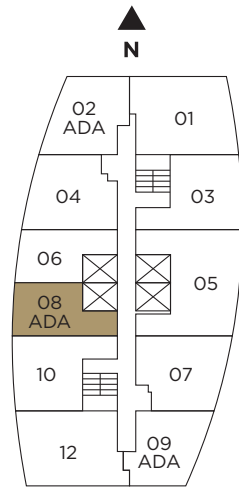
SALES GALLERY
75 SE 6th St, Miami, FL 33131

DISTRICT 225
225 N. Miami Ave, Miami, FL 33128
786.522.5332

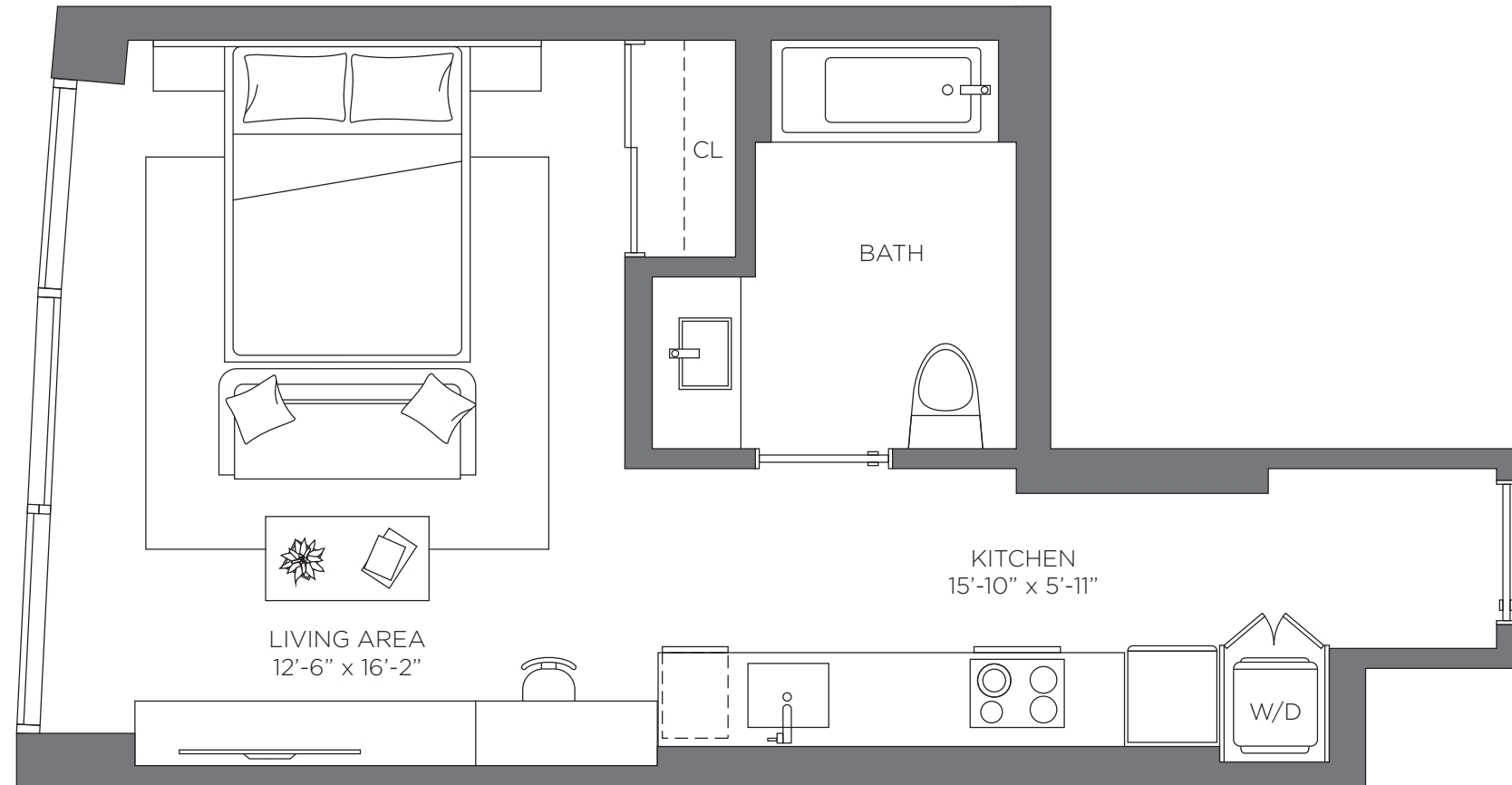
District225Miami.com

UNIT 08 ADA





UNIT 08 ADA
 STUDIO | 1 BATH
 615 sq. ft.
 57.13 m²



DISTRICT 225
 MIAMI

Exclusive Sales and Marketing by Related Realty in collaboration with Fortune Development Sales

The dimensions stated for this unit floor plan are approximate because there are various recognized methods for calculating the square footage of a unit. The square footage stated here is calculated from the exterior boundaries of the exterior walls to the centerline of interior demising walls without deductions for cutouts, curves, or architectural features. This method typically results in quoted dimensions greater than the dimensions that would be determined by using other accepted methods. The definition of "Unit" and the calculation method to be relied upon is set forth in the Developer's Prospectus. The illustrations and images are conceptual and may vary from concept to actual construction. The floor plan, unit layout, locations of windows, doors, closets, plumbing fixtures, mechanical equipment, appliances, structural elements, architectural design elements, and the uses, configurations, and entries to rooms may change with based on final approved plans, permitting, and construction. The furniture plan and the uses of space illustrated are suggested uses only and not intended to guaranty any specific use of space. Furnishings, design features, fixtures, and décor illustrated are conceptual and may vary upon completion. The Developer, Parcel C, LLC, is a licensee of The Related Group and ROVR Parcel C, LLC, neither of which is the Developer. © 2021 with all rights reserved Parcel C, LLC.

DISTRICT 225
MIAMI

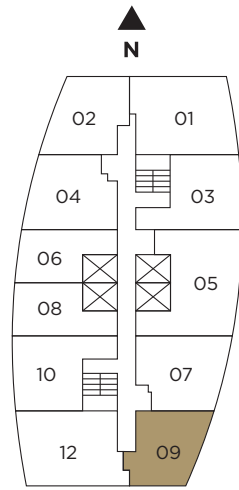
SALES GALLERY
75 SE 6th St, Miami, FL 33131

DISTRICT 225
225 N. Miami Ave, Miami, FL 33128
786.522.5332

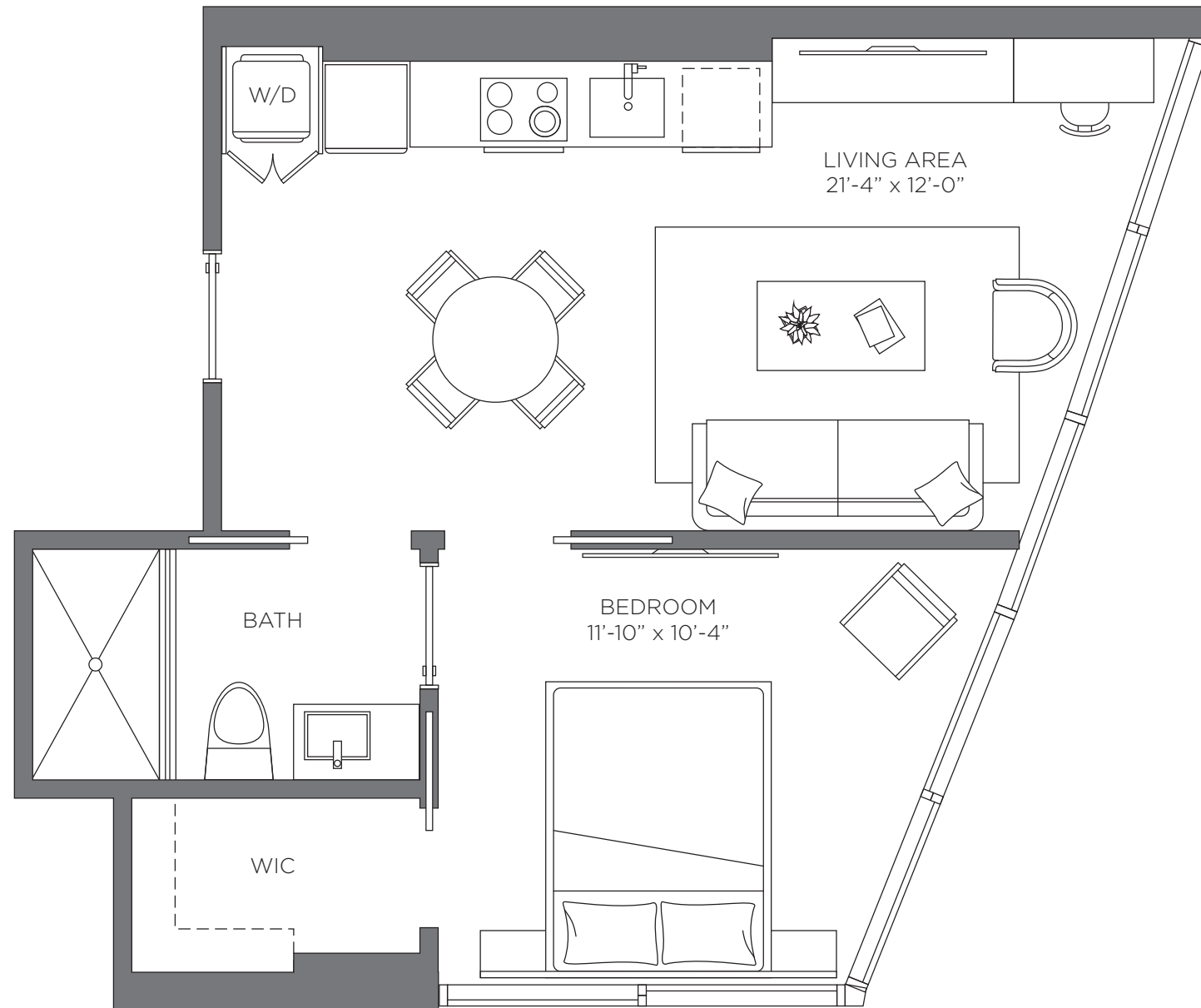
District225Miami.com

UNIT 09





UNIT 09
 1 BED | 1 BATH
 558 sq. ft.
 51.83 m²



DISTRICT 225
 MIAMI

Exclusive Sales and Marketing by Related Realty in collaboration with Fortune Development Sales

The dimensions stated for this unit floor plan are approximate because there are various recognized methods for calculating the square footage of a unit. The square footage stated here is calculated from the exterior boundaries of the exterior walls to the centerline of interior demising walls without deductions for cutouts, curves, or architectural features. This method typically results in quoted dimensions greater than the dimensions that would be determined by using other accepted methods. The definition of "Unit" and the calculation method to be relied upon is set forth in the Developer's Prospectus. The illustrations and images are conceptual and may vary from concept to actual construction. The floor plan, unit layout, locations of windows, doors, closets, plumbing fixtures, mechanical equipment, appliances, structural elements, architectural design elements, and the uses, configurations, and entries to rooms may change with based on final approved plans, permitting, and construction. The furniture plan and the uses of space illustrated are suggested uses only and not intended to guaranty any specific use of space. Furnishings, design features, fixtures, and décor illustrated are conceptual and may vary upon completion. The Developer, Parcel C, LLC, is a licensee of The Related Group and ROVR Parcel C, LLC, neither of which is the Developer. © 2021 with all rights reserved Parcel C, LLC.

DISTRICT 225
MIAMI

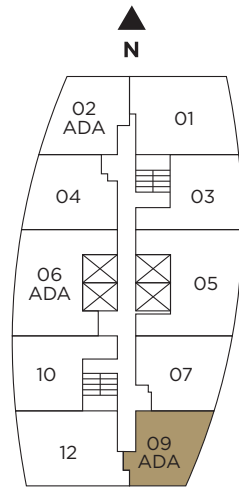
SALES GALLERY
75 SE 6th St, Miami, FL 33131

DISTRICT 225
225 N. Miami Ave, Miami, FL 33128
786.522.5332

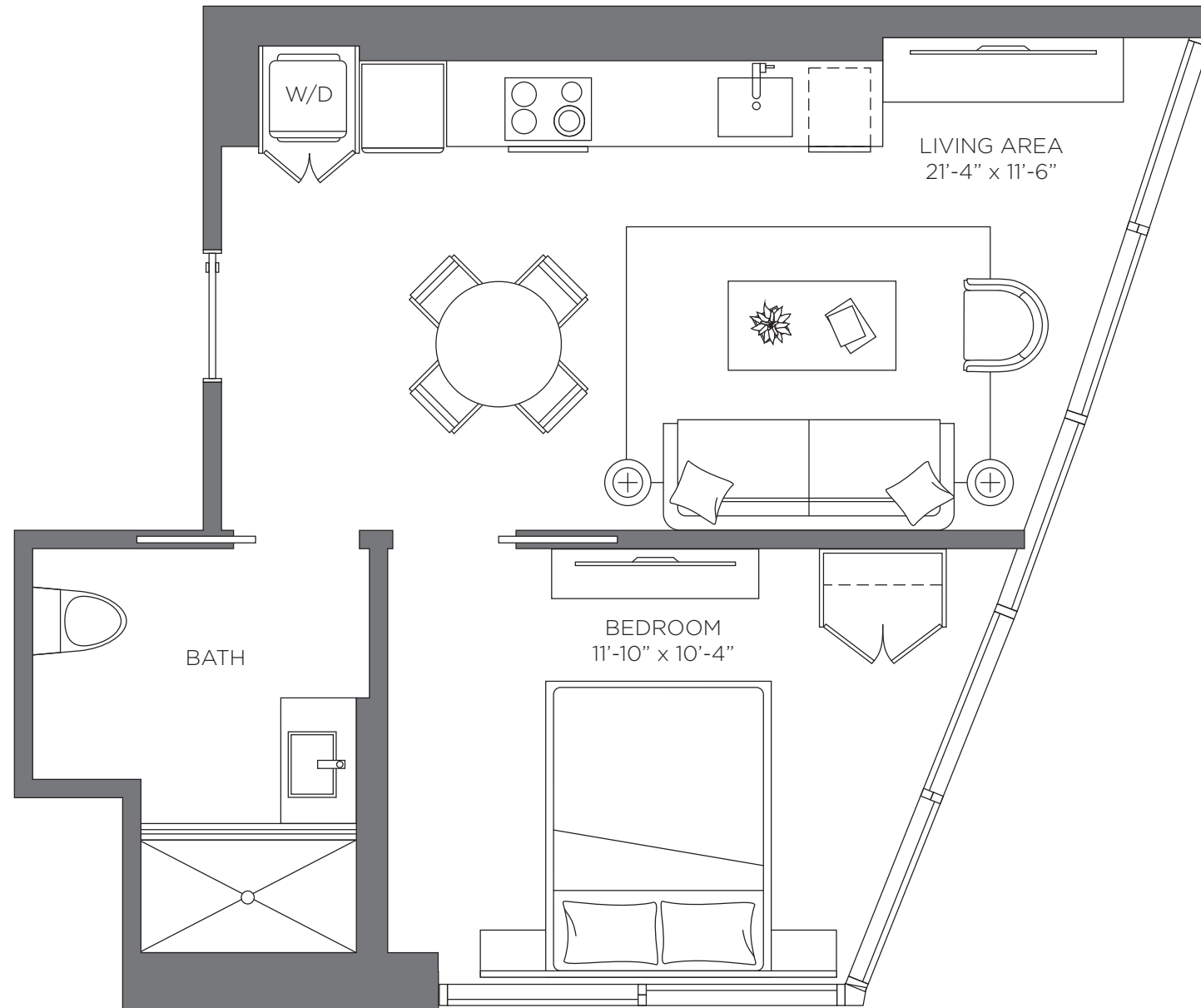
District225Miami.com

UNIT 09 ADA





UNIT 09 ADA
 1 BED | 1 BATH
 608 sq. ft.
 56.48 m²



DISTRICT 225
 MIAMI

Exclusive Sales and Marketing by Related Realty in collaboration with Fortune Development Sales

The dimensions stated for this unit floor plan are approximate because there are various recognized methods for calculating the square footage of a unit. The square footage stated here is calculated from the exterior boundaries of the exterior walls to the centerline of interior demising walls without deductions for cutouts, curves, or architectural features. This method typically results in quoted dimensions greater than the dimensions that would be determined by using other accepted methods. The definition of "Unit" and the calculation method to be relied upon is set forth in the Developer's Prospectus. The illustrations and images are conceptual and may vary from concept to actual construction. The floor plan, unit layout, locations of windows, doors, closets, plumbing fixtures, mechanical equipment, appliances, structural elements, architectural design elements, and the uses, configurations, and entries to rooms may change with based on final approved plans, permitting, and construction. The furniture plan and the uses of space illustrated are suggested uses only and not intended to guaranty any specific use of space. Furnishings, design features, fixtures, and décor illustrated are conceptual and may vary upon completion. The Developer, Parcel C, LLC, is a licensee of The Related Group and ROVR Parcel C, LLC, neither of which is the Developer. © 2021 with all rights reserved Parcel C, LLC.

DISTRICT 225
MIAMI

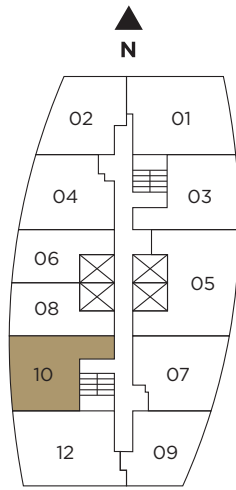
SALES GALLERY
75 SE 6th St, Miami, FL 33131

DISTRICT 225
225 N. Miami Ave, Miami, FL 33128
786.522.5332

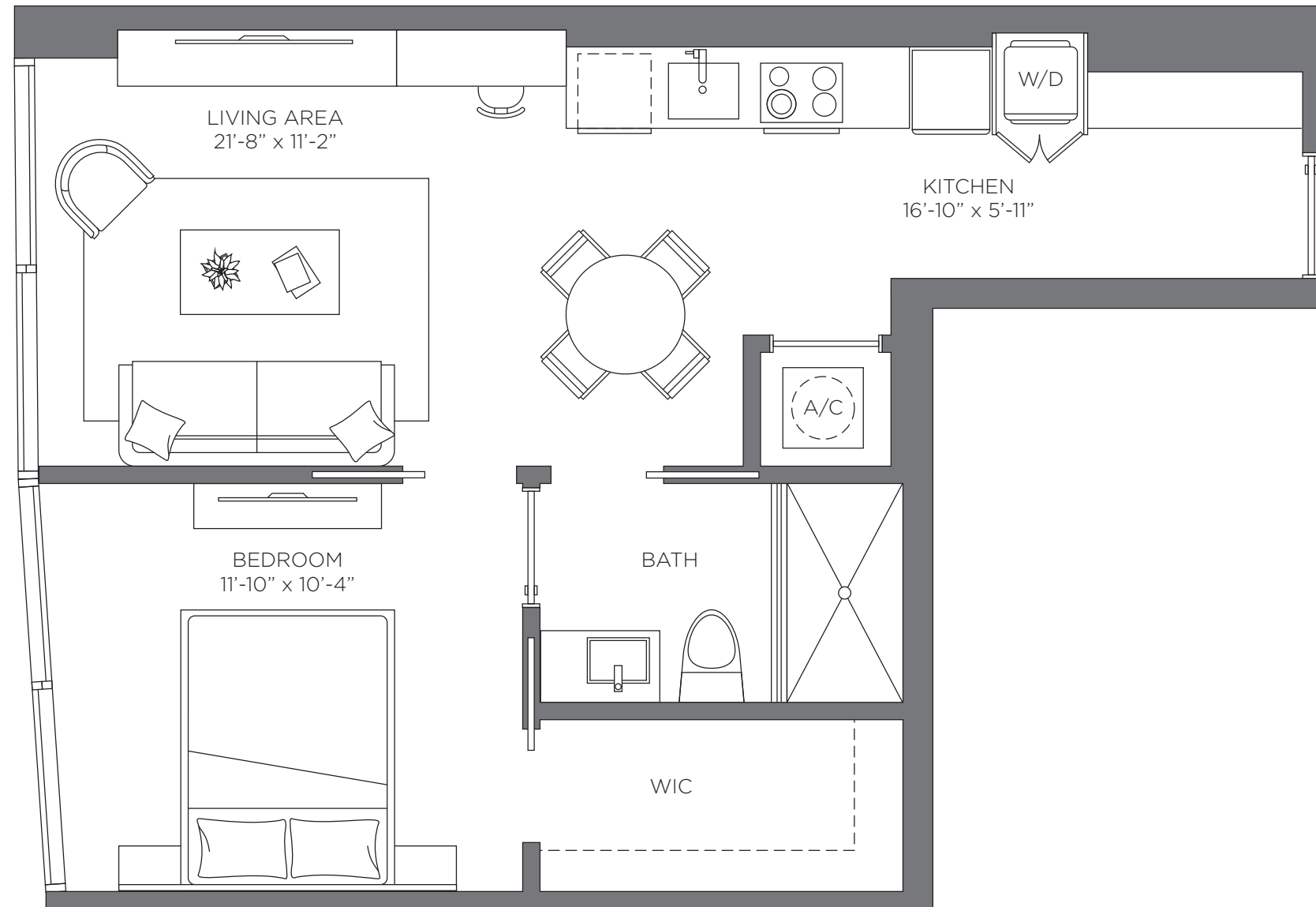
District225Miami.com

UNIT 10





UNIT 10
 1 BED | 1 BATH
 615 sq. ft.
 57.13 m²



DISTRICT 225
 MIAMI

Exclusive Sales and Marketing by Related Realty in collaboration with Fortune Development Sales

The dimensions stated for this unit floor plan are approximate because there are various recognized methods for calculating the square footage of a unit. The square footage stated here is calculated from the exterior boundaries of the exterior walls to the centerline of interior demising walls without deductions for cutouts, curves, or architectural features. This method typically results in quoted dimensions greater than the dimensions that would be determined by using other accepted methods. The definition of "Unit" and the calculation method to be relied upon is set forth in the Developer's Prospectus. The illustrations and images are conceptual and may vary from concept to actual construction. The floor plan, unit layout, locations of windows, doors, closets, plumbing fixtures, mechanical equipment, appliances, structural elements, architectural design elements, and the uses, configurations, and entries to rooms may change with based on final approved plans, permitting, and construction. The furniture plan and the uses of space illustrated are suggested uses only and not intended to guaranty any specific use of space. Furnishings, design features, fixtures, and décor illustrated are conceptual and may vary upon completion. The Developer, Parcel C, LLC, is a licensee of The Related Group and ROVR Parcel C, LLC, neither of which is the Developer. © 2021 with all rights reserved Parcel C, LLC.

DISTRICT 225
MIAMI

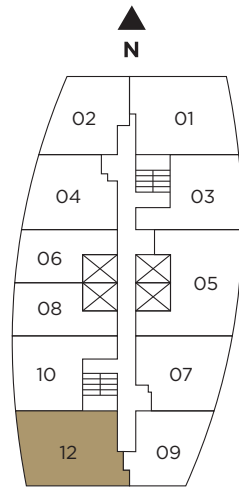
SALES GALLERY
75 SE 6th St, Miami, FL 33131

DISTRICT 225
225 N. Miami Ave, Miami, FL 33128
786.522.5332

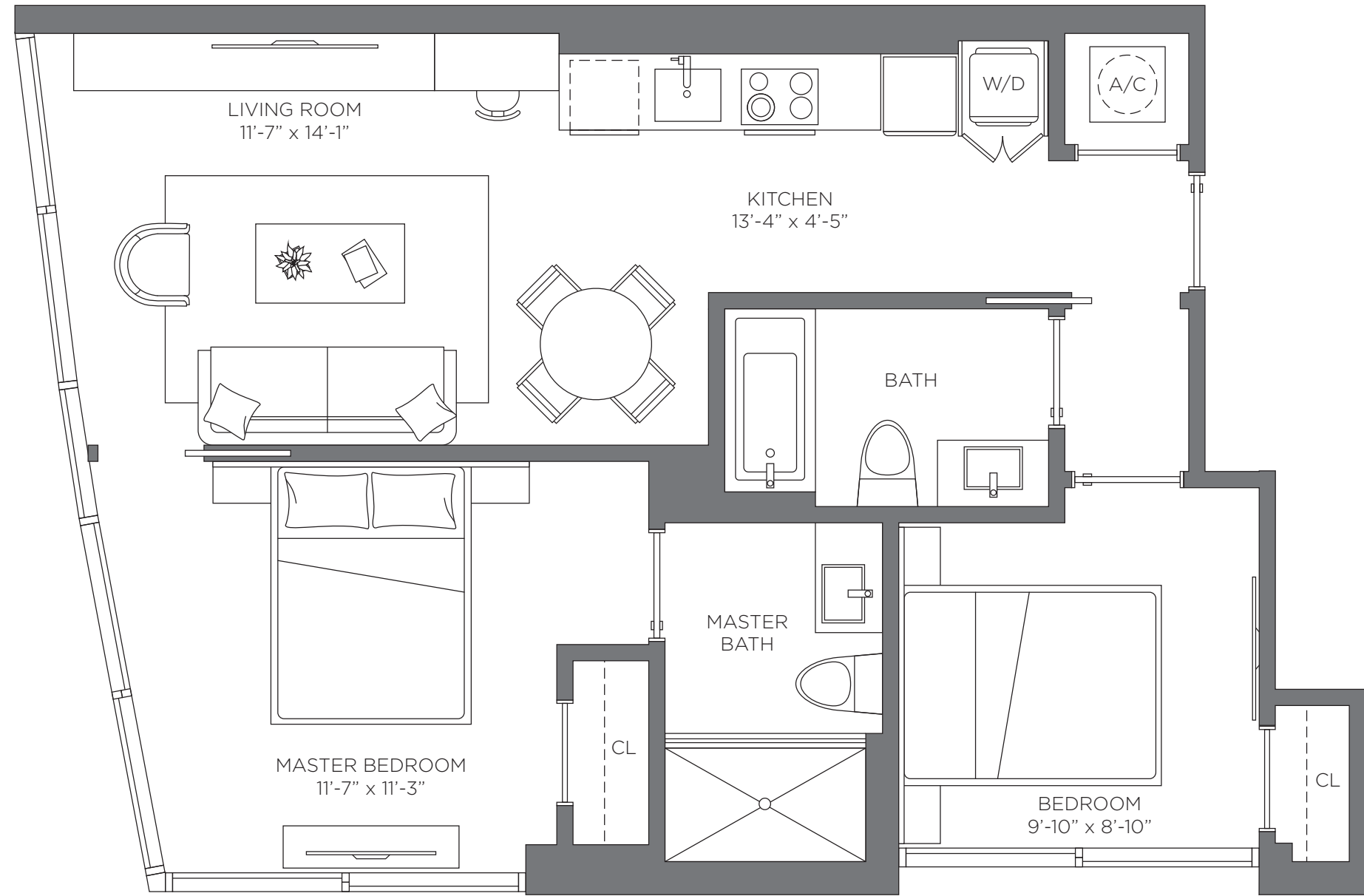
District225Miami.com

UNIT 12





UNIT 12
 2 BED | 2 BATH
 786 sq. ft.
 73.02 m²



DISTRICT 225
 MIAMI

Exclusive Sales and Marketing by Related Realty in collaboration with Fortune Development Sales

The dimensions stated for this unit floor plan are approximate because there are various recognized methods for calculating the square footage of a unit. The square footage stated here is calculated from the exterior boundaries of the exterior walls to the centerline of interior demising walls without deductions for cutouts, curves, or architectural features. This method typically results in quoted dimensions greater than the dimensions that would be determined by using other accepted methods. The definition of "Unit" and the calculation method to be relied upon is set forth in the Developer's Prospectus. The illustrations and images are conceptual and may vary from concept to actual construction. The floor plan, unit layout, locations of windows, doors, closets, plumbing fixtures, mechanical equipment, appliances, structural elements, architectural design elements, and the uses, configurations, and entries to rooms may change with based on final approved plans, permitting, and construction. The furniture plan and the uses of space illustrated are suggested uses only and not intended to guaranty any specific use of space. Furnishings, design features, fixtures, and décor illustrated are conceptual and may vary upon completion. The Developer, Parcel C, LLC, is a licensee of The Related Group and ROVR Parcel C, LLC, neither of which is the Developer. © 2021 with all rights reserved Parcel C, LLC.